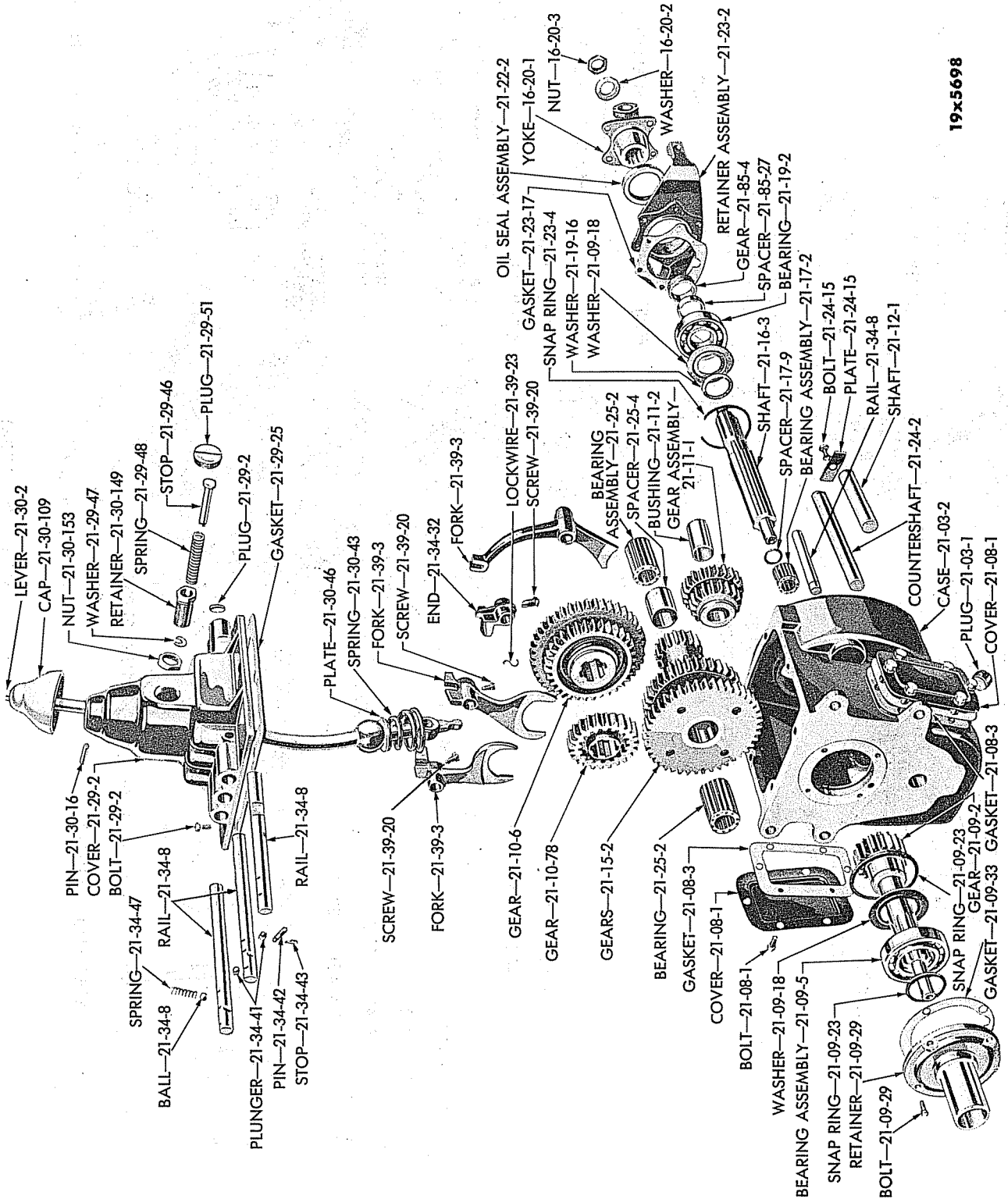


GROUP 21 - TRANSMISSION



19x5698

TRANSMISSION (UP-TO-TYPE)

Plate 21-1

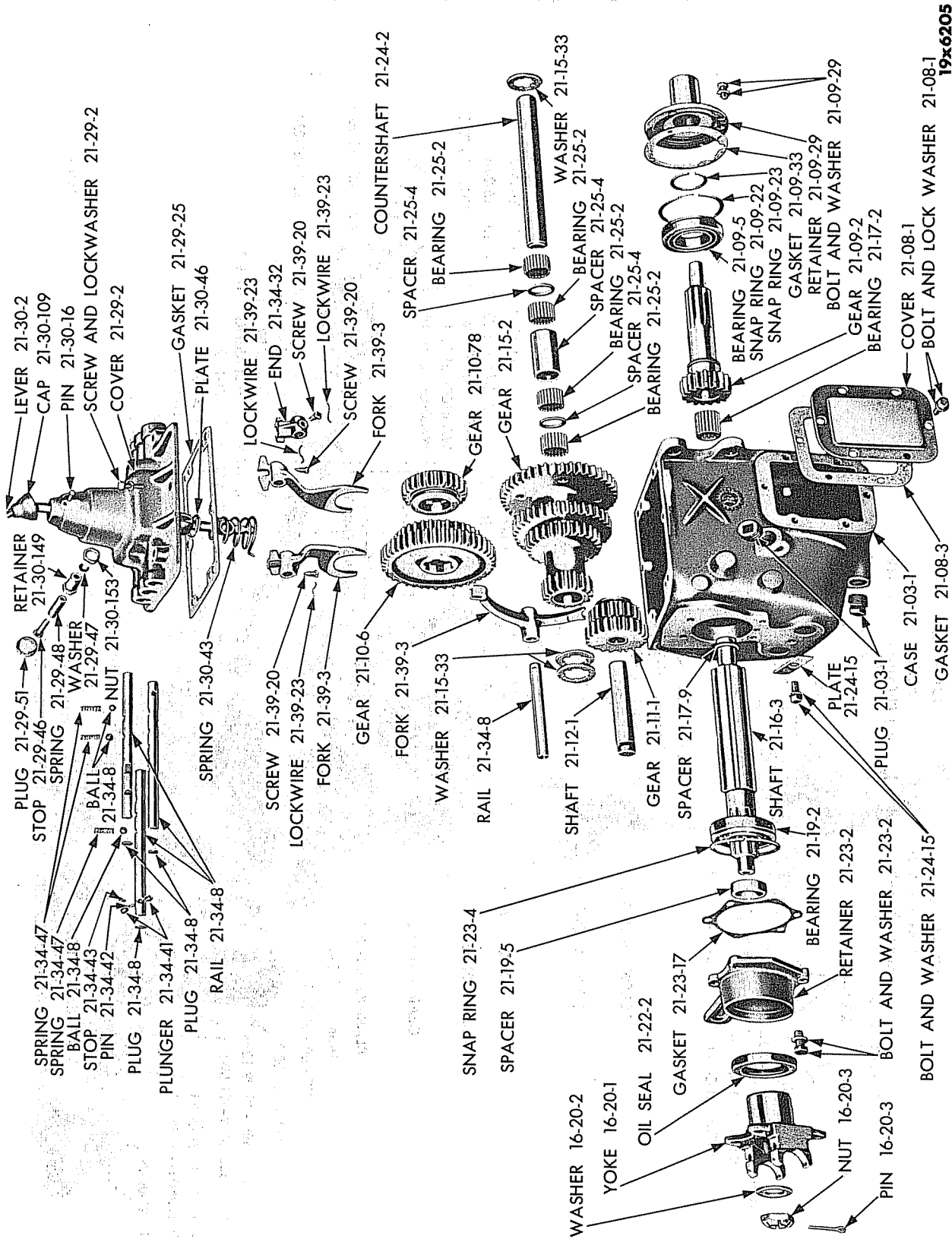
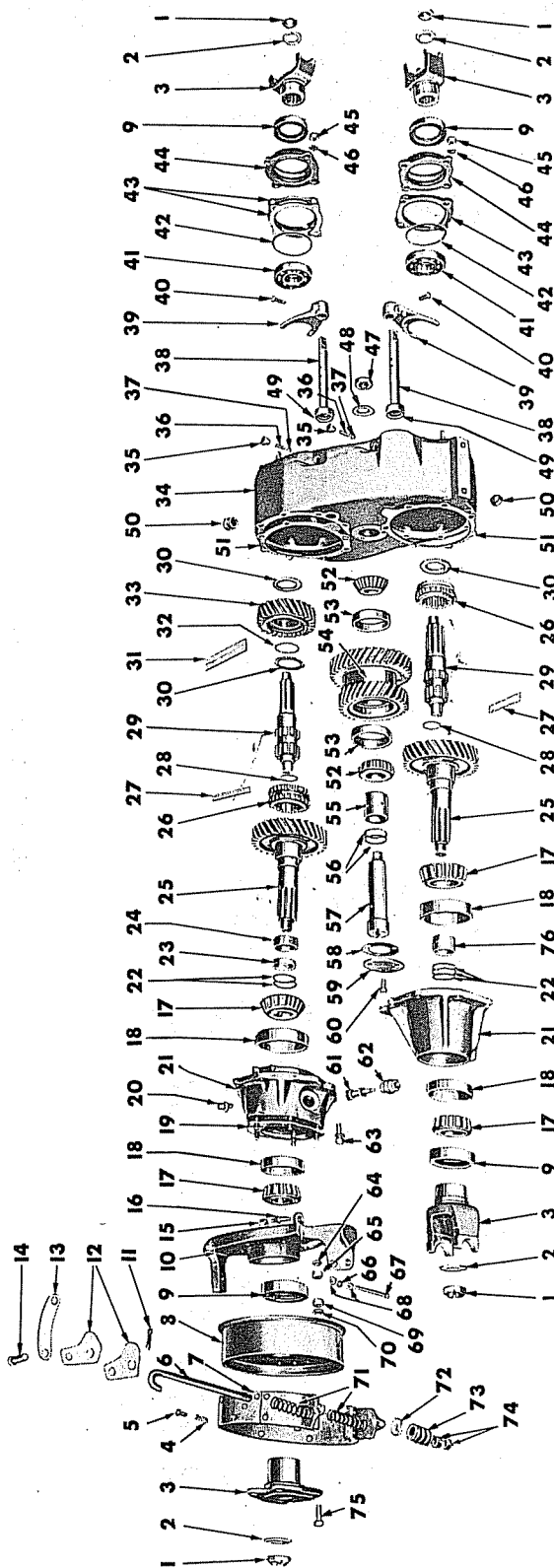


Plate 21-2

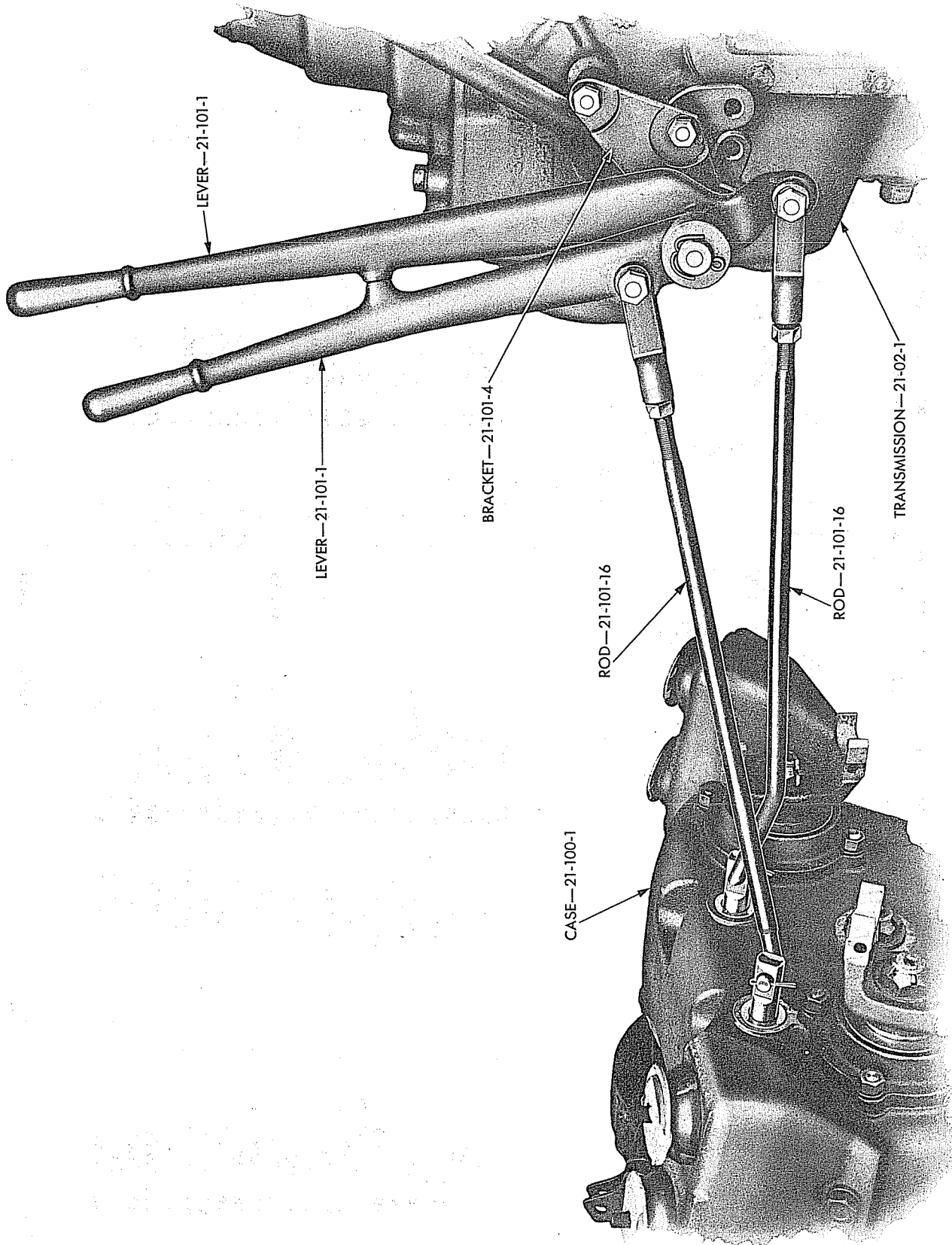


REF. NO.	PART NAME	PART TYPE CODE	REF. NO.	PART NAME	PART TYPE CODE	REF. NO.	PART NAME	PART TYPE CODE
1	NUT	16-20-3	27	ROLLER	21-103-19	53	CUP	21-104-12
2	WASHER	16-20-2	28	SNAP RING	21-103-20	54	GEAR ASSY	21-104-1
3	YOKE	16-20-1	29	SHAFT	21-102-5	55	SPACER	21-104-28
4	SPRING	4-06-11	30	WASHER	21-102-18	56	SHIM	21-104-27
5	SCREW	4-06-3	31	ROLLER	21-102-25	57	SHAFT	21-104-5
6	BOLT	4-07-1	32	SPACER	21-102-26	58	GASKET	21-104-7
7	BAND ASSY	4-03-1	33	GEAR	21-102-1	59	COVER	21-104-6
8	DRUM	4-01-1	34	CASE ASSY	21-100-1	60	BOLT	21-104-6
9	OIL SEAL ASSY	16-20-20	35	SCREW	21-109-13	61	PINION	21-85-5
10	SUPPORT	4-29-1	36	SPRING	21-109-17	62	NUT	21-85-60
11	COTTER PIN	4-26-2	37	BALL	21-109-5	63	BOLT	21-103-22
12	LEVER	4-26-1	38	RAIL	21-109-5	64	LOCKWASHER	4-29-1
13	LINK	4-26-11	39	FORK	21-109-1	65	NUT	4-29-1
14	PIN	4-26-2	40	SCREW	21-109-2	66	LOCKWASHER	4-03-1
15	NUT	4-26-12	41	BEARING ASSY	21-102-7	67	SCREW	4-03-1
16	STUD	4-26-12	42	RING (PART OF BEARING ASSY)	21-102-7	68	NUT	4-03-1
17	CONE ASSY	21-103-11	43	GASKET	21-102-16	69	NUT	4-01-2
18	CUP	21-103-10	44	RETAINER ASSY	21-102-14	70	LOCKWASHER	4-01-2
19	GASKET	4-29-2	45	NUT	21-102-14	71	SPRING	4-07-4
20	NIPPLE	21-100-23	46	LOCKWASHER	21-102-14	72	WASHER	4-07-1
21	RETAINER ASSY	21-103-22	47	NUT	21-104-32	73	SPRING	4-07-5
22	SHIM	21-103-24	48	WASHER	21-104-33	74	NUT	4-07-1
23	SPACER	21-85-27	49	OIL SEAL ASSY	21-109-10	75	BOLT	4-01-2
24	GEAR	21-85-4	50	PLUG	21-100-1	76	SPACER	21-103-7
25	SHAFT	21-103-6	51	GASKET	21-103-23			
26	GEAR	21-111-2	52	CONE ASSY	21-104-13			

19x1296B

TRANSFER CASE

Plate 21-3



19x5703

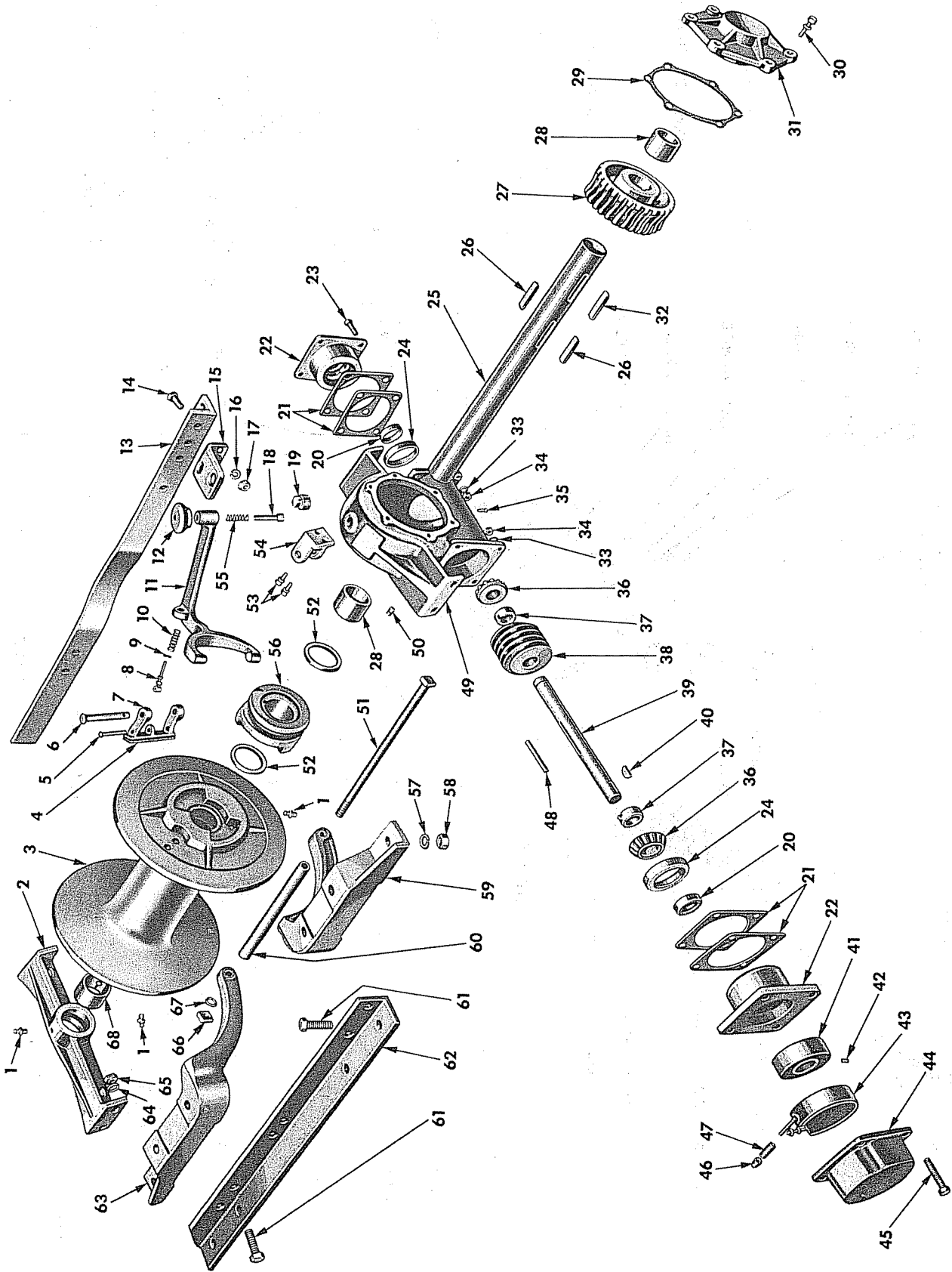
TRANSFER CASE CONTROLS

Plate 21-4

POWER WAGON PARTS LIST

TRANSMISSION

19L6431



WINCH - MODEL MU-2

Plate 21-6

Plate 21-6	WINCH - MODEL MU-2	Braden Winch Co. Part Number	Chrysler Part Type Code
Ref. No.	Name		
1	Fitting	---	---
2	Bracket, w/Bushing or Bearing Leg, w/Bushing	MU2-133-O	---
3	Drum, Cable	M2-135	---
4	Drag, Brake Block, w/Lining	MU-131-O	---
5	Pin, Drag Brake Link	---	21-97-91
6	Pin, Clutch Shifter Fork Pivot	MU-143B	---
7	Drag, Brake Block, w/Lining	MU-131-O	---
8	Link, Drag Brake	UU-131L	---
9	Pin, Cotter	---	21-97-91
10	Spring, Drag Brake	A-143-S	---
11	Fork, Clutch Shifter	MU2-143	---
12	Knob, Clutch Shifter Fork Handle	MU-143D	---
13	Bracket or Rear Base Angle	MU2-146R	---
14	Bolt	---	---
15	Bracket, Clutch Shifter Fork Locating	MU2-143C	---
16	Washer, Lock	---	---
17	Nut	---	---
18	Shaft, Shifter Fork Handle	MU-143E	---
19	Plug, Vented	20-E116H	---
20	Oil Seal, Worm Shaft	MU-149A	---
21	Gasket, Worm Bearing Retainer	MU-149G	---
22	Retainer, Worm Bearing	MU-149	---
23	Bolt or Screw	---	---
24	Cup, Worm Thrust	---	21-97-55
25	Shaft, Drum	MU2-136	---
26	Key, Clutch	MU-141A	---
27	Gear, Worm	MU-144G MU101	---
28	Bushing, Cover or Housing	MU-134B	---
29	Gasket, Cover or Housing	MU-144G	---
30	Screw and Washer	---	---
31	Cover, w/Bushing	MU-144-O	---
32	Key, Worm Gear	MU-101A	---
33	Washer, Lock	---	---
34	Nut	---	---
35	Screw	---	---
36	Cone and Rollers, Worm Thrust Bearing	---	21-97-56
37	Seal, Worm Grease	MU-149A	---
38	Worm	MU-100R	---
39	Shaft, Worm	MU2-202	---
40	Key, Woodruff	---	---
41	Drum, Safety Brake	MU-151	---
42	Screw, Set	---	---
43	Band, Brake	MU-152-O	---
44	Housing, Safety Brake	MU-248	---
45	Screw	---	---
46	Nut	---	---
47	Spring, Brake Band	MU-156	---
48	Key, Worm Shaft	MU-100A	---
49	Housing, w/Bushing	MU2-134-O	---
50	Plug	---	---
51	Bolt	MU2-184B	---
52	Ring, Drum Retaining	MU-139	---
53	Screw	---	---
54	Bracket, Shifter Fork	MU2-143A	---
55	Spring, Clutch Shifter Fork	MU-143S	---
56	Clutch, Sliding	M2-141	---
57	Washer, Lock	---	---
58	Nut	---	---
59	Guide	MU2-284L	---
60	Spacer, Cable Guide	---	21-97-122
61	Bolt	---	---
62	Angle, Front Base	MU2-146F	---
63	Guide	MU2-284R	---
64	Washer, Lock	---	---
65	Nut	---	---
66	Nut	---	---
67	Washer, Lock	---	---
68	Bushing, Bracket or Leg	MU-133B	---

Note: Parts identified by name only are standard parts — order by description.

POWER WAGON PARTS LIST

TRANSMISSION

CODE	PART NAME AND DESCRIPTION	B SERIES NO.	C SERIES NO.	MODEL CODES		PART NO.
				WDX	PW	

TRANSMISSION

NOTE 1: Parts with single dagger (†) are used on "UP TO" type transmissions identified as having drain plug in center section of transmission case going in at approximately 30° angle to bottom of case.

NOTE 2: Parts with double dagger (‡) are used on "AFTER" type transmissions identified as having drain plug in rear of transmission case going in parallel to bottom of case.

21-01-0 TRANSMISSION PACKAGES

21-01-3	GASKET PACKAGE	-		1	1	*†1063 659
	UP TO Serial No. 83949164	-	1		1	*‡1243 622
	AFTER Serial No. 83949164		3		1	* 1243 622
			3		1	* 1316 362

21-02-0 TRANSMISSION ASSEMBLY (LESS COVER AND CONTROLS)

21-02-1	TRANSMISSION	-		1	1	*† 921 869
	UP TO Serial No. 83949164	-	1		1	*‡1265 422
	AFTER Serial No. 83949164		3		1	* 1265 422
	Bolt, 7/16"-12 x 1 3/4"		3		1	‡ 1666 547
	Washer, lock	-	-	4	4	* 180 212
		-	-	4	4	* 120 898

CODE	4 SPEED TRANSMISSION	921 869	1265 422	‡1666 547
------	----------------------	---------	----------	-----------

NOTE: All quantities are one (1) unless otherwise indicated in parenthesis.

C-38711

C 91 931

21-03-0 TRANSMISSION CASE

21-03-1	CASE	921 853	1265 423	‡1666 548
	Plug, drain	103 869	103 869	* 103 869
	Plug, filler	103 869	103 875	* 103 875

21-08-0 POWER TAKE-OFF

21-08-1	COVER (2)	556 875	556 875	* 556 875
	Bolt, 3/8"-16 x 1/2"	180 116	180 116	* 180 116
	Bolt, 3/8"-16 x 3/4" (11)	180 120	180 120	* 180 120
	Washer, lock (12)	120 382	120 382	* 120 382
21-08-3	GASKET, Cover (2)	567 500	567 500	* 567 500
21-08-5	POWER TAKE-OFF, Assembly	1189 419	1265 551	‡1668 739
	Bolt, 3/8"-16 x 1" (6)	180 122	180 122	----
	Bolt, 3/8"-16 x 1 1/4" (*)	180 124	180 124	* 180 124
	Washer, lock (12)	120 382	120 382	* 120 382
	Washer, plain	120 394	120 394	----
21-08-6	SCREW, Long (*)	1191 472	1191 472	*1191 472
	Upper	----	1265 554	*1265 554
21-08-7	LEVER	924 237	924 237	‡1668 740
21-08-8	PIN, Lever	926 167	926 167	* 926 167
	Pin, cotter	119 209	119 209	* 119 209
21-08-9	LOCK, Lever, Complete	1189 834	1189 834	*1189 834
	Bolt (2)	180 018	180 018	----
21-08-10	WASHER, Lever Anti-Rattle	905 206	905 206	* 905 206
21-08-11	HOUSING	----	1190 429	----
21-08-12	GASKET, to Transmission	917 073	917 073	* 917 073
21-08-13	WASHER, Plain, Trans. Screw	----	1262 273	*1262 273

★ Indicates use as required

‡ Indicates parts not listed in any previous parts books.

Series No. (1 indicates B-1 Series) (2 indicates B-2 Series) (3 indicates B-3 Series) (4 indicates B-4 Series)

Series No. (1 indicates C-1 Series) (3 indicates C-3 Series)

Where dash (-) is shown in Series Column Part is for All.

Prices and specifications subject to change without notice.

* Indicates change or addition.

Printed in U.S.A.

April 30, 1956 Supersedes Jan. 30, 1953.

POWER WAGON PARTS LIST

TRANSMISSION

Page 21-7

CODE	4 SPEED TRANSMISSION	921 869	1265 422	E1666 547
21-08-0 POWER TAKE-OFF - Cont'd		C.38711		C-91931
21-08-15	TUBE, Rear Drive Shaft, w/YOKE Front, 79 1/2" long	1189 453	1189 453	*1189 453
	Rear, 44 5/8" long	1189 455	1189 455	*1189 455
21-08-16	SHAFT, Drive	1193 751	1193 751	*1193 751
21-08-17	YOKE, Rear Drive Shaft	1189 444	1189 444	*1189 444
	Key, Woodruff	271 422	271 422	* 271 422
21-08-18	SCREW, Rear Drive Shaft Yoke	1189 422	1189 422	*1189 422
21-08-20	CONE, Drive Shaft Bearing (2)	1193 749	1193 749	*1193 749
21-08-21	CUP, Drive Shaft Bearing (2)	55 584	55 584	* 55 584
21-08-22	HOUSING, Rear Drive Shaft Center Bearing	564 721	564 721	* 564 721
21-08-23	INSULATOR, Rear Drive Shaft Center Bearing Housing	562 119	562 119	* 562 119
21-08-25	OIL SEAL, Drive Shaft (2)	1193 752	1193 752	*1193 752
21-08-26	BEARING, Drive Shaft Center Ball	564 728	564 728	* 564 728
21-08-27	SPACER, Rear Drive Shaft Center Bearing Retainer	575 791	575 791	* 575 791
21-08-28	NUT, Rear Drive Shaft Center Bearing Retainer	575 792	575 792	* 575 792
21-08-29	LOCK, Rear Drive Shaft Center Bearing Retainer Nut	1090 684	1090 684	*1090 684
21-08-30	PLATE, Drive Shaft Oil Seal Retainer	1193 740	1193 740	*1193 740
	Bolt, 5/16"-18 x 1" (6)	180 079	180 079	* 180 079
	Washer, lock (6)	120 214	120 214	* 120 214
21-08-32	OIL SEAL, Rear Drive Shaft Center Bearing (2)	556 939	556 939	* 556 939
21-08-33	MUD SLINGER, Drive Shaft Center Bearing	509 977	509 977	* 509 977
	Bolt, 1/4"-28 x 1/2"	181 561	181 561	* 181 561
	Washer, lock	121 753	121 753	* 121 753
	Washer, plain	120 392	120 392	* 120 392
21-08-34	PLATE, Drive Shaft End	1190 430	1190 430	E1668 741
21-08-35	GASKET, Drive Shaft Plate (.010) (★) (.020) (★)	926 158 926 159	926 158 926 159	* 926 158 * 926 159
21-08-36	BRACKET, Rear Drive Shaft Center Bearing Housing	1189 445	1189 445	*1189 445
	Bolt, 7/16"-20 x 1 1/4" (2)	181 668	181 668	* 181 668
	Nut (2)	271 506	271 506	* 271 506
	Washer, lock (2)	120 383	120 383	* 120 383
	Washer, plain (2)	120 396	120 396	* 120 396
21-08-37	CAP, Rear Drive Shaft Center Bearing Housing Bracket	562 117	562 117	* 562 117
	Bolt, 7/16"-20 x 2" (2)	181 674	181 674	* 181 674
	Nut (2)	271 506	271 506	* 271 506
	Washer, lock (2)	120 383	120 383	* 120 383
21-08-41	YOKE, Rear Drive Shaft Universal Joint, w/PLUG	925 035	925 035	* 925 035
	Fitting, lubricant	145 433	145 433	* 145 433
21-08-44	OIL SEAL, Rear Drive Shaft Universal Joint Spline	563 099	563 099	* 563 099
21-08-45	WASHER, Rear Drive Shaft Universal Joint Spline Oil Seal	572 485	572 485	* 572 485
21-08-46	CAP, Rear Drive Shaft Universal Joint Spline Oil Seal	572 515	572 515	* 572 515
21-08-50	WASHER, Rear Drive Shaft Universal Joint Cross . (12)	575 785	575 785	* 575 785
21-08-51	RETAINER, Rear Drive Shaft Universal Joint Cross Washer (12)	599 252	599 252	* 599 252
21-08-53	UNIVERSAL JOINT PACKAGE (Rear Drive Shaft)	947 556	947 556	* 947 556
21-08-54	BUSHING and ROLLER, Rear Drive Shaft Universal Joint Cross (12)	575 787	575 787	* 575 787
21-08-55	RETAINER, Rear Drive Shaft Universal Joint Cross Roller Bushing (12)	575 790	575 790	* 575 790
21-08-56	CLAMP, Rear Drive Shaft Universal Joint Cross Bushing (2)	575 723	575 723	* 575 723
	Bolt, 5/16"-24 x 3" (2)	182 703	182 703	* 182 703
	Nut (2)	120 368	120 368	* 120 368

★ Indicates use as required

E Indicates parts not listed in any previous parts books.

Series No. (1 indicates B-1 Series) (2 indicates B-2 Series) (3 indicates B-3 Series) (4 indicates B-4 Series)

Series No. (1 indicates C-1 Series) (3 indicates C-3 Series)

Where dash (-) is shown in Series Column Part is for All.

Prices and specifications subject to change without notice.

* Indicates change or addition.

Printed in U.S.A.

April 30, 1956 Supersedes Jan. 30, 1953.

POWER WAGON PARTS LIST

TRANSMISSION

CODE	4 SPEED TRANSMISSION	921 869	1265 422	E1666 547
21-08-0 POWER TAKE-OFF - Cont'd				
21-08-58	LOCK, Rear Drive Shaft Universal Joint Cross Bushing Clamp Bolt (2)	572 604	572 604	* 572 604
		(2) 572 603	572 603	* 572 603
21-08-61	COVER, Rear Drive Shaft Pillow Block Housing	1189 456	1189 456	*1189 456
	Bolt, 7/16"-20 x 2" (4)	181 674	181 674	* 181 674
	Nut. (4)	271 506	271 506	* 271 506
	Washer, lock (4)	120 383	120 383	* 120 383
21-08-65	CONE, Rear Drive Shaft Pillow Block Shaft Bearing (2)	1189 687	1189 687	*1189 687
21-08-66	CUP, Rear Drive Shaft Pillow Block Shaft Bearing (2)	698 394	698 394	* 698 394
21-08-70	YOKE, Rear Drive Shaft Pillow Block	599 026	599 026	* 599 026
21-08-71	NUT, Rear Drive Shaft Pillow Block Yoke	600 366	600 366	* 600 366
	Pin, cotter	119 209	119 209	* 119 209
21-08-72	WASHER, Rear Drive Shaft Pillow Block Yoke Nut	308 466	308 466	* 308 466
21-08-75	OIL SEAL, Rear Drive Shaft Pillow Block, Front	1189 685	1189 685	*1189 685
	Rear	1189 686	1189 686	*1189 686
21-08-76	GEAR, Sliding	1190 431	1190 431	*1190 431
21-08-77	GEAR, Reverse	926 146	921 146	* 926 146
21-08-78	SHAFT, Reverse Gear	926 147	926 147	----
21-08-79	BEARING, Reverse Gear (2)	926 148	926 148	* 926 148
21-08-84	HOUSING, Rear Drive Shaft Pillow Block, w/Bearing CUPS	1189 682	1189 682	*1189 682
	Bolt, 5/8"-18 x 1 5/8"	271 745	271 745	* 271 745
	Washer, lock	121 574	121 574	* 121 574
	Fitting, lubricant	145 433	145 433	* 145 433
21-08-85	SHAFT, Idler Gear	1193 741	E1392 453	----
	Screw	139 063	139 063	----
21-08-86	GEAR, Idler	1193 748	E1392 454	E1668 742
21-08-87	SPACER, Idler Gear	1193 742	E1392 455	----
21-08-88	ROLLER, Idler Gear Bearing (18)	1193 744	1193 744	----
21-08-89	WASHER, Idler Gear (2)	1193 743	E1392 456	----
21-08-90	SHAFT, Rear Drive Shaft Pillow Block	1189 683	1189 683	*1189 683
21-08-91	SCREW, Idler Gear Shaft Set	----	E1392 457	----
21-08-93	CARRIER, Belt Pulley Gear and Pinion, Complete.	1189 747	1189 747	*1189 747
21-08-94	CUP, Idler Gear Shaft (2)	----	----	*1139 291
21-08-95	CARRIER, Belt Pulley Gear, w/Bearing CUPS	1189 715	1189 715	*1189 715
	Bolt, 7/16"-14 x 1 3/8" (4)	180 149	180 149	* 180 149
	Washer, lock (4)	120 383	120 383	* 120 383
21-08-96	GASKET, Belt Pulley Gear Carrier (2)	1191 354	1191 354	*1191 354
21-08-97	CUP, Belt Pulley Gear Carrier Bearing (2)	698 403	698 403	* 698 403
21-08-99	CONE, Belt Pulley Gear Carrier Bearing (2)	698 404	698 404	* 698 404
21-08-101	SPACER, Belt Pulley Gear Carrier Bearing	1189 720	1189 720	*1189 720
21-08-103	SHIM, Belt Pulley Gear Carrier Bearing Adjusting (.010) (★)	1189 722	1189 722	*1189 722
	(.0125) (★)	1189 723	1189 723	*1189 723
21-08-105	NUT, Belt Pulley Gear Carrier Bearing Adjusting Bolt, 1/4"-20 x 1"	1189 727	1189 727	*1189 727
		180 022	180 022	* 180 022
21-08-108	OIL SEAL, Belt Pulley Gear Carrier Bearing	1189 726	1189 726	----
21-08-110	SHIM, Belt Pulley Gear Carrier (.005) (★)	1189 717	1189 717	----
	(.007) (★)	1189 718	1189 718	----
21-08-112	GEAR, Belt Pulley	1189 713	1189 713	*1189 713
	Plug, expansion	103 896	103 896	* 103 896
21-08-114	CARRIER, Belt Pulley Pinion, w/Bearing CUPS	1189 730	1189 730	*1189 730
	Plug, pipe	103 868	103 868	* 103 868
21-08-118	PINION, Belt Pulley	1189 714	1189 714	*1189 714
21-08-120	CUP, Belt Pulley Pinion Inner Bearing	698 413	698 413	* 698 413
	Outer Bearing	698 394	698 394	* 698 394
21-08-122	CONE, Belt Pulley Pinion Inner Bearing	698 415	698 415	* 698 415
	Outer Bearing	589 211	589 211	* 589 211

★ Indicates use as required Prices and specifications subject to change without notice.
 □ Indicates parts not listed in any previous parts books. * Indicates change or addition.
 Series No. (1 indicates B-1 Series) (2 indicates B-2 Series) (3 indicates B-3 Series) (4 indicates B-4 Series)
 Series No. (1 indicates C-1 Series) (3 indicates C-3 Series) Printed in U.S.A.
 Where dash (-) is shown in Series Column Part is for All. April 30, 1956 Supersedes Jan. 30, 1953.

POWER WAGON PARTS LIST

C38211

TRANSMISSION

Page 21-9

CODE	4 SPEED TRANSMISSION	921 869	1265 422	E1666 547
21-08-0 POWER TAKE-OFF - Cont'd				
21-08-124	WASHER, Belt Pulley Pinion Inner Bearing			
	(.0886)	(★) 665 237	665 237	* 665 237
	(.0905)	(★) 670 109	670 109	* 670 109
	(.0925)	(★) 670 110	670 110	* 670 110
	(.0945)	(★) 670 111	670 111	* 670 111
21-08-126	SHIM, Belt Pulley Pinion Outer Bearing Adjusting			
	(.010)	(★) 1189 739	1189 739	*1189 739
	(.0125)	(★) 1189 740	1189 740	*1189 740
21-08-128	SPACER, Belt Pulley Pinion Bearing	1189 731	1189 731	*1189 731
21-08-130	OIL SEAL, Belt Pulley Pinion Bearing	1189 732	1189 732	*1189 732
21-08-132	PULLEY, Belt	1189 712	1189 712	*1189 712
21-08-134	NUT, Belt Pulley	600 366	600 366	* 600 366
	Pin, cotter	119 209	119 209	* 119 209
21-08-136	WASHER, Belt Pulley Nut	308 466	308 466	* 308 466
21-08-137	FORK, Shifter	1190 441	1190 441	*1190 441
	Pin, cotter	119 209	119 209	* 119 209
	Washer, plain	120 395	120 395	* 120 395
21-08-138	SHAFT, Shifter	1193 747	1193 747	*1193 747
	Ball	104 921	104 921	* 104 921
	Plug, pipe	113 935	113 935	* 113 935
21-08-139	OIL SEAL, Shifter Shaft (2)	926 162	926 162	* 926 162
21-08-141	SPRING, Shifter Ball	926 163	926 163	* 926 163
21-08-142	EYE BOLT, Shifter	926 164	926 164	* 926 164
	Nut	120 369	120 369	* 120 369
21-09-0 MAIN DRIVE GEAR AND BEARING				
21-09-2	GEAR	583 300	1189 801	E1666 549
21-09-5	BEARING, Gear	620 520	1502 045	*1502 045
21-09-18	WASHER, Oil Retaining, Front	556 885	----	----
	Rear	556 892	----	----
21-09-23	SNAP RING, Bearing	----	1090 125	----
	SNAP RING, Gear	556 833	556 833	----
21-09-29	RETAINER, Gear Bearing	1265 638	1265 638	E1666 551
	Bolt, 5/16"-18 x 5/8" (2)	180 075	180 075	* 180 075
	Bolt, 5/16"-18 x 3/4" (2)	180 077	180 077	* 180 077
	Washer, lock (★)	138 485	138 485	* 138 485
	Washer, lock (2)	120 214	----	----
21-09-33	GASKET, Retainer	1090 121	1090 121	*1090 121
21-09-36	NUT, Bearing Retaining	----	----	*1265 637
21-10-0 MAIN SHAFT GEARS				
21-10-6	GEAR, Low and Second	598 480	1090 123	----
	Sliding	----	----	E1664 322
21-10-16	GEAR, Second Speed	----	----	E1664 320
21-10-26	SNAP RING, Second Speed Gear	----	----	E1664 321
21-10-31	GEAR, Third Speed	----	----	E1664 323
21-10-34	SHIM, Third Speed Gear, Thin (★)	----	----	E1664 325
	Thick (★)	----	----	E1664 326
21-10-78	GEAR, Third and Direct	598 481	1091 490	----
21-11-0 REVERSE IDLER GEAR				
21-11-1	GEAR, w/BUSHING	598 483	1090 139	E1664 339
21-11-2	BUSHING	556 848	----	E1664 341
21-12-0 REVERSE IDLER SHAFT				
21-12-1	SHAFT, Gear	556 883	1090 141	*1266 008

★ Indicates use as required

□ Indicates parts not listed in any previous parts books.

Series No. (1 indicates B-1 Series) (2 indicates B-2 Series) (3 indicates B-3 Series) (4 indicates B-4 Series)

Series No. (1 indicates C-1 Series) (3 indicates C-3 Series)

Where dash (-) is shown in Series Column Part is for All.

Prices and specifications subject to change without notice.

* Indicates change or addition.

Printed in U.S.A.

April 30, 1956 Supersedes Jan. 30, 1953.

POWER WAGON PARTS LIST

TRANSMISSION

CODE	4 SPEED TRANSMISSION	921 869	1265 422	E1666 547
21-14-0 CLUTCH GEAR AND SLEEVE				
21-14-5	GEAR, Synchronizer	----	----	E1664 335
21-14-6	CLUTCH, Synchronizer Sliding	----	----	E1664 334
21-14-19	RING, Synchronizer Stop - Outer (2)	----	----	*1501- 653
	w/PINS - Inner (2)	----	----	E1664 331
21-14-20	SNAP RING, Synchronizer (.086 - .088) (*)	----	----	*1507 786
	(.089 - .091) (*)	----	----	*1507 787
	(.092 - .094) (*)	----	----	*1507 788
	(.095 - .096) (*)	----	----	*1507 789
21-15-0 COUNTERSHAFT GEARS				
21-15-2	GEAR, Cluster	598 482	1090 132	----
21-15-33	WASHER, Thrust	----	1090 137	----
21-16-0 MAIN SHAFT				
21-16-3	SHAFT, Main	598 478	1091 851	E1664 319
21-17-0 MAIN SHAFT PILOT BEARING				
21-17-2	BEARING	141 852	1091 903	----
	ROLLERS, Bearing (13)	----	----	E1664 327
21-17-7	SNAP RING	----	----	E1664 329
21-17-8	WASHER	----	----	E1664 328
21-17-9	SPACER	556 873	1091 904	----
21-19-0 MAIN SHAFT REAR BEARING				
21-19-2	BEARING	620 521	957 846	*1090 126
21-19-5	SPACER	----	1269 283	*1269 283
21-19-16	WASHER	556 832	----	----
21-22-0 MAIN SHAFT REAR BEARING OIL SEAL				
21-22-2	OIL SEAL	593 596	593 596	* 593 596
21-23-0 MAIN SHAFT REAR BEARING RETAINER				
21-23-2	RETAINER, w/OIL SEAL	567 316	1265 425	*1265 425
	Bolt, 5/16"-18 x 1" (4)	180 079	180 079	* 180 079
	Bolt, 5/16"-18 x 2"	180 087	180 087	* 180 087
	Washer, lock (5)	120 214	120 214	* 120 214
21-23-4	SNAP RING	598 232	----	----
	Front	598 231	----	----
	Bearing	----	1090 130	----
21-23-17	GASKET	----	1090 129	*1090 129
21-24-0 COUNTERSHAFT				
21-24-2	COUNTERSHAFT	556 881	1090 133	----
	w/GEARS, Integral	----	----	E1664 336
21-24-15	PLATE, Countershaft and Idler Lock	556 888	556 888	*1266 009
	Bolt, 3/8"-16 x 3/4"	180 120	180 120	----
	Washer, lock	120 382	120 382	----
21-25-0 COUNTERSHAFT BEARING				
21-25-2	BEARING (2)	556 911	----	----
	NEEDLE (88)	----	565 291	----
	BEARING, Front	----	----	* 856 455
	Rear	----	----	*1265 674

★ Indicates use as required

□ Indicates parts not listed in any previous parts books.

Series No. (1 indicates B-1 Series) (2 indicates B-2 Series) (3 indicates B-3 Series) (4 indicates B-4 Series)

Series No. (1 indicates C-1 Series) (3 indicates C-3 Series)

Where dash (-) is shown in Series Column Part is for All.

Prices and specifications subject to change without notice.

* Indicates change or addition.

Printed in U.S.A.

April 30, 1956 Supersedes Jan. 30, 1953.

CODE	4 SPEED TRANSMISSION	921 869	1265 422	1666 547
21-25-0 COUNTERSHAFT BEARING - Cont'd				
21-25-4	SPACER (*)	556 895	1090 135	-----
	Center	-----	1090 136	-----
21-26-0 COUNTERSHAFT FRONT BEARING RETAINER				
21-26-3	RETAINER	-----	-----	*1266 000
	Screw (4)	-----	-----	* 180 079
21-26-4	GASKET (2)	-----	-----	*1266 001
21-26-8	LOCKWIRE, Screw	-----	-----	* 522 295
21-26-9	WASHER	-----	-----	*1265 670
21-26-11	SCREW (2)	-----	-----	*1265 671
21-27-0 COUNTERSHAFT REAR BEARING				
21-27-2	RETAINER	-----	-----	1664 338
21-27-3	GASKET, Retainer	-----	-----	*1266 004
21-29-0 GEARSHIFT COVER				
21-29-2	COVER, Case	921 854	1090 144	1666 553
	Bolt, 3/8"-16 x 1" (6)	180 122	-----	-----
	Bolt, 3/8"-16 x 1" (2)	-----	-----	* 180 122
	Bolt, 3/8"-16 x 1 1/2" (6)	-----	180 126	-----
	Bolt, 3/8"-16 x 2 1/4" (2)	-----	-----	* 180 132
	Washer, lock (6)	120 382	120 382	* 120 382
	Plug (6)	117 612	103 892	* 103 892
21-29-25	GASKET, Case Cover	556 947	1196 668	*1266 012
21-29-33	SCREW, Long	-----	-----	1664 346
	Short	-----	-----	1664 345
	Washer, lock (2)	-----	-----	* 120 383
21-29-46	STOP, Reverse Shift	571 392	571 392	-----
21-29-47	WASHER, Reverse Shift Stop Plunger	313 514	313 514	-----
21-29-48	SPRING, Reverse Shift Stop Plunger	572 035	572 035	-----
21-29-51	PLUG, Reverse Stop	313 503	313 503	-----
21-30-0 GEARSHIFT LEVER				
21-30-2	LEVER	921 855	921 855	1666 523
21-30-6	KNOB	42 971	42 971	* 42 971
21-30-16	PIN, Guide	571 390	571 390	1664 361
21-30-43	SPRING	584 309	584 309	1664 360
21-30-46	PLATE, Ball Friction	571 391	571 391	-----
21-30-47	RETAINER, Ball Spring	-----	-----	1664 358
21-30-109	CAP, Ball	317 448	317 448	-----
21-30-149	RETAINER, First Speed Stop Plunger Spring	313 515	313 515	-----
21-30-153	NUT, First Speed Stop Retainer Check Lock	313 516	313 516	-----
21-34-0 GEARSHIFT RAIL				
21-34-8	RAIL, Reverse Shift Fork	556 903	1266 022	-----
	Low and Second Shift	556 839	1090 148	1664 349
	Third and Direct Shift	556 840	1090 146	1664 347
	Reverse Shift	556 841	1090 147	1664 348
	Ball	104 920	104 920	* 104 920
21-34-32	END, Reverse Shift	556 902	556 902	-----
	LUG, Reverse Shift	-----	-----	1664 354
	Low and Second Shift	-----	-----	1664 352
21-34-41	PLUNGER, Interlock (2)	556 882	556 882	* 556 882
21-34-42	PIN, Interlock	556 890	556 890	*1265 694
21-34-43	STOP, Interlock Pin	517 364	517 364	-----
21-34-44	PLUG, Interlock	928 178	928 178	* 928 178

★ Indicates use as required

☐ Indicates parts not listed in any previous parts books.

Series No. (1 indicates B-1 Series) (2 indicates B-2 Series) (3 indicates B-3 Series) (4 indicates B-4 Series)

Series No. (I indicates C-1 Series) (3 indicates C-3 Series)

Where dash (-) is shown in Series Column Part is for All.

Prices and specifications subject to change without notice.

* Indicates change or addition.

Printed in U.S.A.

April 30, 1956 Supersedes Jan. 30, 1953.

POWER WAGON PARTS LIST

TRANSMISSION

CODE	4 SPEED TRANSMISSION	921 869	1265 422	E1666 547
21-39-0 GEARSHIFT FORK				
21-39-3	FORK, First and Second	556 842	1090 149	E1664 350
	Third and Direct	556 843	1090 150	E1664 351
	Reverse Shift	556 844	556 844	E1664 356
21-39-20	SCREW, Fork to Rail (3)	517 362	517 362	----
21-39-22	PIN, Fork to Rail Roll	----	----	E1664 355
21-39-23	LOCKWIRE, Fork to Rail Screw (3)	556 944	556 944	----
21-41-0 GEARSHIFT REVERSE LATCH PLUNGER				
21-41-2	PLUNGER, Shift Rail Lug Latch	----	----	*1500 335
21-41-3	SPRING, Rail Lug Latch Plunger	----	----	* 567 499
21-41-5	SNAP RING, Shift Rail Lug Latch Plunger	----	----	* 313 514

C 91817

CODE	PART NAME AND DESCRIPTION	B SERIES NO.	C SERIES NO.	MODEL CODES		PART NO.
				WDX	PW	
21-84-0 SPEEDOMETER CABLE						
21-84-1	CABLE (w/SHAFT and HOUSING) (UP TO Ser. No. 83919725 Det. Built and 88766262 S.L. Built) (96" lgh.)	1, 2		1	1	* 926 079
	(AFTER Ser. No. 83919725 Det. Built and 88766262 S.L. Built) (96" lgh.)	1, 2, 3	-	-	1	*1271 148
	Clip	-	-	1	1	* 120 521
	Bolt, 1/4"-28 x 1"	-	-	1	1	* 181 568
	Nut	-	-	1	1	* 120 367
	Washer, lock	-	-	1	1	* 120 380
	Washer, plain	-	-	1	1	* 120 392
21-84-4	SHAFT, Drive (96" lgh.)	-	-	1	1	* 926 080
21-84-5	LUBRICANT (8 oz. tube)	-	-	★	★	*1243 632

21-85-0 SPEEDOMETER GEAR AND PINION

GEAR, Drive (see following chart)
 PINION, Drive (see following chart)

4.89 to 1 Ratio

Tire Size	Ply	Gear	No. Teeth	Pinion	No. Teeth
7.50 x 16	8	561 816	5	1268 649	16
9.00 x 16	8	561 816	5	929 917	14

5.83 to 1 Ratio

Tire Size	Ply	Gear	No. Teeth	Pinion	No. Teeth
7.50 x 16	8	561 651	4	1188 168	15
9.00 x 16	8	561 651	4	929 917	14

21-85-27	SPACER, Gear (in transfer case)	-	-	1	1	* 927 374
	(in trans.)	-	-	1	1	*† 556 941
21-85-48	PLUG, Pinion Hole (in trans.)	-	-	1	1	* 928 698
21-85-56	OIL SEAL, Pinion (in transfer case)	-	-	1	1	* 652 840
21-85-60	NUT, Drive Pinion Retaining (in transfer case)	-	-	1	1	* 929 918
21-85-68	BUSHING, Drive Pinion (in trans.)	-	-	1	1	*† 516 268
	(in transfer case)	-	-	1	1	* 516 268

★ Indicates use as required

Prices and specifications subject to change without notice.

† Indicates parts not listed in any previous parts books.

* Indicates change or addition.

Series No. (1 indicates B-1 Series) (2 indicates B-2 Series) (3 indicates B-3 Series) (4 indicates B-4 Series)

Series No. (1 indicates C-1 Series) (3 indicates C-3 Series)

Printed in U.S.A.

Where dash (-) is shown in Series Column Part is for All.

April 30, 1956 Supersedes Nov. 5, 1953.

CODE	PART NAME AND DESCRIPTION	B SERIES NO.	C SERIES NO.	MODEL CODES		PART NO.
				WDX	PW	

21-97-O WINCH PARTS

Note: Orders for winch assembly and component parts should be sent direct to Braden Winch Co., Tulsa, Oklahoma. See illustration pages 21-5A and 21-5B for Braden Winch Co. part numbers.

Note: Orders for winch driving parts such as power take-off, universal joint and shaft should be sent direct to Chrysler Corporation, Parts Division.

21-97-3	BOLT, to Frame	-	-	2	2	* 660 378
	Bolt, 1/2"-20 x 1 1/2" (to bumper)	-	-	2	2	* 181 700
	Bolt, 1/2"-20 x 1 1/2" (to frame)	-	-	2	2	* 181 700
	Nut	-	-	6	6	* 120 371
	Washer, lock	-	-	6	6	* 120 384
21-97-5	SHAFT, Universal Drive	-	-	1	1	* 921 905
21-97-9	JOINT, Universal Drive, Complete (front)	-	-	1	1	* 1263 955
	(rear)	-	-	1	1	* 1263 958
	Fitting, lubricant (rear)	-	-	1	1	* 191 758
	Fitting, lubricant (front)	-	-	1	1	* 110 347
	Key, Woodruff	-	-	2	2	* 271 422
21-97-11	SEAL, Universal Joint	-	-	8	8	* 928 692
21-97-12	RETAINER, Universal Joint Seal	-	-	8	8	* 928 693
21-97-14	SNAP RING, Universal Joint Cross Bushing (AFTER Ser. No. 88759859)	-	-	8	8	* 1263 960
21-97-15	BUSHING, Universal Joint Cross	-	-	8	8	* 928 695
21-97-16	CROSS, Universal Joint	-	-	2	2	* 928 694
21-97-17	CABLE, Assembly	-	-	1	1	* 930 382
21-97-18	BLOCK, Cable Snatch	-	-	1	1	* 915 815
21-97-20	PLATE, Universal Joint Cross Bushing Cover (UP TO Ser. No. 88759859)	-	-	1	1	* 928 696
21-97-21	U-BOLT, Cable to Winch	-	-	1	1	* 916 342
21-97-22	WASHER, Cable to Winch U-Bolt Plain	-	-	2	2	* 35 221
	Nut	-	-	2	2	* 120 369
	Washer, lock	-	-	2	2	* 120 382
21-97-24	SCREW, Universal Joint Cross Bushing Cover Plate (UP TO Ser. No. 88759859)	-	-	16	16	* 928 697
21-97-55	CUP, Worm Thrust Bearing	-	-	2	2	* 927 013
21-97-56	CONE, Worm Thrust Bearing	-	-	2	2	* 927 014
21-97-91	PIN, Brake Shoe Link	-	-	1	1	* 583 737
	Pin, cotter	-	-	1	1	* 108 630
21-97-122	SPACER, Cable Guide	-	-	1	1	* 926 750
21-97-128	YOKE, Universal Drive Shaft					
	Rear (power take-off end)	-	-		1	* 1263 957
	Front (winch end)	-	-		1	* 1263 956
	Front	-	-		1	* 1263 957
	Rear	-	-		1	* 1263 959
21-97-129	SCREW, Universal Drive Shaft Yoke	-	-	2	2	* 1189 422
21-97-133	COLLAR, Universal Drive Shaft	-	-	1	1	* 1088 378
	w/SCREW	-	-	1	1	* 917 500
21-97-134	SCREW, Universal Drive Shaft Collar	-	-	1	1	* 1088 377
21-97-135	LOCKWIRE, Universal Drive Shaft Collar Screw	-	-	1	1	* 586 050
21-97-136	LOCKWIRE, Universal Joint Set Screw	-	-	1	1	* 586 050
21-97-137	PIN, Universal Joint Shear	-	-	★	★	* 1189 423
	Pin, cotter	-	-	★	★	* 103 373
21-97-140	FITTING, Universal Joint Cross Grease	-	-	2	2	* 930 200

21-100-O TRANSFER CASE

21-100-1	CASE, Complete	-	-	1	1	* 1188 941
	CASE, w/o Gears and Bearings	-	-	1	1	* 1089 317
	Plug, pipe	-	-	1	1	* 103 875
	Plug, pipe	-	-	1	1	* 103 869
	Plug, pipe	-	-	1	1	* 143 932

★ Indicates use as required

⊖ Indicates parts not listed in any previous parts books.

Series No. (1 indicates B-1 Series) (2 indicates B-2 Series) (3 indicates B-3 Series) (4 indicates B-4 Series)

Series No. (1 indicates C-1 Series) (3 indicates C-3 Series)

Where dash (-) is shown in Series Column Part is for All.

Prices and specifications subject to change without notice.

* Indicates change or addition.

Printed in U.S.A.

POWER WAGON PARTS LIST

TRANSMISSION

CODE	PART NAME AND DESCRIPTION	B SERIES NO.	C SERIES NO.	MODEL CODES		PART NO.
				WDX	PW	
21-100-O TRANSFER CASE - Cont'd						
21-100-7	SCREW, Mounting (UP TO Ser. No. 83900720 except not used on 83900421 and 83900707)	1		4	4	* 599 878
	(AFTER Ser. No. 83900720 also used on 83900421 and 83900707)	-	-		4	* 1192 706
	Washer, lock	-	-	4	4	* 120 384
21-100-23	NIPPLE, Breather	-	-	1	1	* 915 564
21-100-31	BRACKET, Right (UP TO Ser. No. 83900720 except not used on 83900421 and 83900707)	1		1	1	* 927 678
	Right (AFTER Ser. No. 83900720 also used on 83900421 and 83900707)	-	-		1	* 1267 836
	Left (UP TO Ser. No. 83900720 except not used on 83900421 and 83900707)	1		1	1	* 927 679
	Left	-	-	1	1	* 1267 837
	Nut	-	-	★	★	* 128 014
	Pin, cotter	-	-	★	★	* 108 636
21-100-32	INSULATOR, Bracket (w/1267 836 and 1267 837 brackets)	1		8	8	* 1506 568
	Bolt, 7/16"-20 x 3 1/2"	-	-	4	4	* 181 680
	Nut	-	-	4	4	* 271 506
	Washer, lock	-	-	4	4	* 120 383
	Washer, plain	-	-	4	4	* 120 395
21-100-33	SPACER, Bracket Insulator (w/1267 836 and 1267 837 brackets)	-	1	4	4	* 1390 681
21-100-34	WASHER, Bracket Insulator Spacer	-	1	8	8	* 690 509
21-100-35	BOLT, Bracket to Cross Member, Long (w/927 679 and 928 679 bracket)	-	1	4	4	* 1088 257
	Short (w/927 678 and 927 679 bracket)	-	1	4	4	* 1088 256
21-101-O TRANSFER CASE CONTROL LEVER						
21-101-1	LEVER, Declutch, w/BUSHING	-	-	1	1	* 926 667
	Shift, w/BUSHING	-	-	1	1	* 926 291
21-101-3	SPACER	-	-	2	2	*† 914 510
	Lower	-	-	2	2	*† 914 510
	Upper	-	-	1	1	* 921 865
21-101-4	BRACKET, w/SHAFT	-	-	1	1	* 926 288
	Bolt, 3/8"-16 x 2 1/2"	-	-	1	1	* 180 134
	Washer, lock	-	-	1	1	* 138 489
21-101-16	ROD, Declutch Lever (UP TO Ser. No. 83901343 except not used on 83901289)			1		* 926 810
	Declutch Lever (AFTER Ser. No. 83901343 also used on 83901289)	-	1	1	1	* 1193 487
	Declutch Lever, UP TO Ser. No. 83949001		3		1	* 1193 487
	Declutch Lever, AFTER Ser. No. 83949001		3		1	⊠ 1667 268
	Shift Lever (UP TO Ser. No. 83901343 except not used on 83901289)			1		* 926 812
	Shift Lever (AFTER Ser. No. 83901343 also used on 83901289)	-	1	1	1	* 1193 489
	Shift Lever, UP TO Ser. No. 83949001		3		1	* 1193 489
	Shift Lever, AFTER Ser. No. 83949001		3		1	⊠ 1667 270
	Clevis or Yoke	-	-	2	2	* 117 825
	Nut	-	-	2	2	* 271 506
	Pin, cotter	-	-	2	2	* 119 209
21-101-19	BUSHING	-	-	2	2	* 926 677
21-101-26	BOLT, Shift Lever Rod	-	-	1	1	* 928 666
	Nut	-	-	1	1	* 128 014
	Pin, cotter	-	-	1	1	* 108 636
21-101-27	SPACER	-	-	1	1	* 929 032
21-101-28	WASHER, Shift Shaft Plain	-	-	1	1	* 930 006
21-101-30	BOLT, Declutch Lever Rod	-	-	1	1	* 928 666
	Nut	-	-	1	1	* 128 014
	Pin, cotter	-	-	1	1	* 108 636
21-101-32	WASHER, Declutch Lever Rod Yoke Spring	-	-	1	1	* 869 770
	WASHER, Shift Lever Rod Yoke Spring	-	-	1	1	* 869 770

★ Indicates use as required

Prices and specifications subject to change without notice.

⊠ Indicates parts not listed in any previous parts books.

* Indicates change or addition.

Series No. (1 indicates B-1 Series) (2 indicates B-2 Series) (3 indicates B-3 Series) (4 indicates B-4 Series)

Series No. (1 indicates C-1 Series) (3 indicates C-3 Series)

Printed in U.S.A.

Where dash (-) is shown in Series Column Part is for All.

April 30, 1956 Supersedes Jan. 30, 1953.

CODE	PART NAME AND DESCRIPTION	B SERIES NO.	C SERIES NO.	MODEL CODES		PART NO.
				WDX	PW	
21-102-O TRANSFER CASE DRIVE GEAR AND SHAFT						
21-102-1	GEAR, Drive (24 teeth)	-	-	1	1	* 927 381
21-102-5	SHAFT, Drive	-	-	2	2	* 927 385
	SHAFT, Drive; Upper	-	-	-	1	* 1273 815
	Lower	-	-	-	1	* 1273 816
21-102-7	BEARING, Drive Shaft	-	-	2	2	* 927 630
21-102-14	RETAINER, Drive Shaft Bearing, Front	-	-	2	2	* 927 389
	Stud	-	-	8	8	* 151 386
	Nut	-	-	8	8	* 271 506
	Washer, lock	-	-	8	8	* 120 383
21-102-16	GASKET, Front Bearing Retainer	-	-	★	★	* 927 395
21-102-18	WASHER, Drive Shaft Thrust, Inner	-	-	1	1	* 928 999
	Outer	-	-	2	2	* 927 394
21-102-25	ROLLER, Drive Gear Bearing	-	-	70	70	* 862 159
21-102-26	SPACER, Drive Gear Bearing Roller	-	-	1	1	* 927 769
21-103-O TRANSFER CASE DRIVEN GEAR SHAFT						
21-103-6	SHAFT, Gear	-	-	2	2	* 1089 328
21-103-7	SPACER	-	-	1	1	* 927 373
21-103-10	CUP, Shaft Bearing, Front	-	-	2	2	* 503 229
	Rear	-	-	2	2	* 310 213
21-103-11	CONE, Shaft Bearing, Front	-	-	2	2	* 913 778
	Rear	-	-	2	2	* 927 375
21-103-19	ROLLERS, Gear Shaft	-	-	30	30	* 602 007
21-103-20	SNAP RING, Gear Shaft Roller	-	-	2	2	* 862 173
21-103-22	RETAINER, Shaft Bearing, Upper, w/CUPS, STUDS and BAFFLE	-	-	1	1	* 927 360
	Upper, Complete, w/DRUM, RETAINER, BEARINGS and SHAFT	-	-	1	1	* 1194 025
	Lower, w/CUPS	-	-	1	1	* 927 391
	Bolt, 3/8"-16 x 1 1/4"	-	-	12	12	* 180 124
	Stud	-	-	4	4	* 113 247
	Nut	-	-	4	4	* 271 506
	Washer, lock	-	-	16	16	* 120 382
21-103-23	GASKET, Shaft Bearing Retainer	-	-	2	2	* 927 376
21-103-24	SHIM, Shaft Bearing (.004 thk.)	-	-	★	★	* 927 368
	(.005 thk.)	-	-	★	★	* 927 369
	(.0125 thk.)	-	-	★	★	* 927 370
	(.015 thk.)	-	-	★	★	* 930 402
21-104-O TRANSFER CASE IDLER GEAR AND SHAFT						
21-104-1	GEAR, w/CUPS	-	-	1	1	* 1089 324
21-104-5	SHAFT	-	-	1	1	* 927 361
21-104-6	COVER, Shaft	-	-	1	1	* 927 365
	Bolt, 5/16"-18 x 3/4"	-	-	3	3	* 180 077
	Washer, lock	-	-	3	3	* 120 214
21-104-7	GASKET, Shaft Cover	-	-	1	1	* 927 364
21-104-12	CUP, Gear Bearing	-	-	2	2	* 310 213
21-104-13	CONE, Gear Bearing	-	-	2	2	* 927 375
21-104-27	SHIM, Gear Bearing (.004 thk.)	-	-	★	★	* 927 368
	(.005 thk.)	-	-	★	★	* 927 369
	(.0125 thk.)	-	-	★	★	* 927 370
	(.015 thk.)	-	-	★	★	* 930 402
21-104-28	SPACER, Gear Bearing	-	-	1	1	* 927 366
21-104-32	NUT, Gear Shaft Retainer	-	-	1	1	* 562 536
	Pin, cotter	-	-	1	1	* 119 209
21-104-33	WASHER, Gear Shaft Retaining Nut	-	-	1	1	* 578 994

★ Indicates use as required

☐ Indicates parts not listed in any previous parts books.

Series No. (1 indicates B-1 Series) (2 indicates B-2 Series) (3 indicates B-3 Series) (4 indicates B-4 Series)

Series No. (1 indicates C-1 Series) (3 indicates C-3 Series)

Where dash (-) is shown in Series Column Part is for All.

Prices and specifications subject to change without notice.

* Indicates change or addition.

Printed in U.S.A.

April 30, 1956 Supersedes Jan. 30, 1953.

