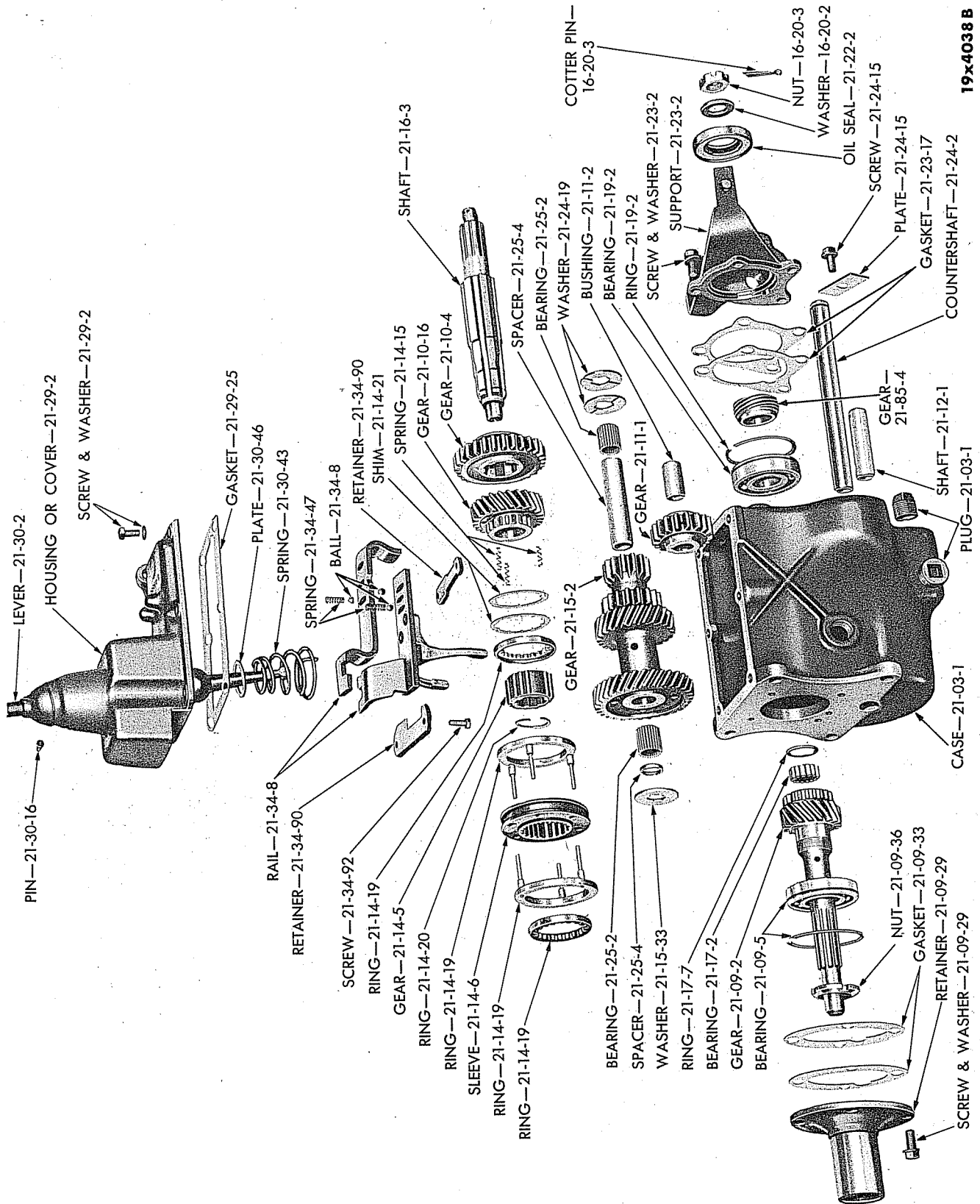


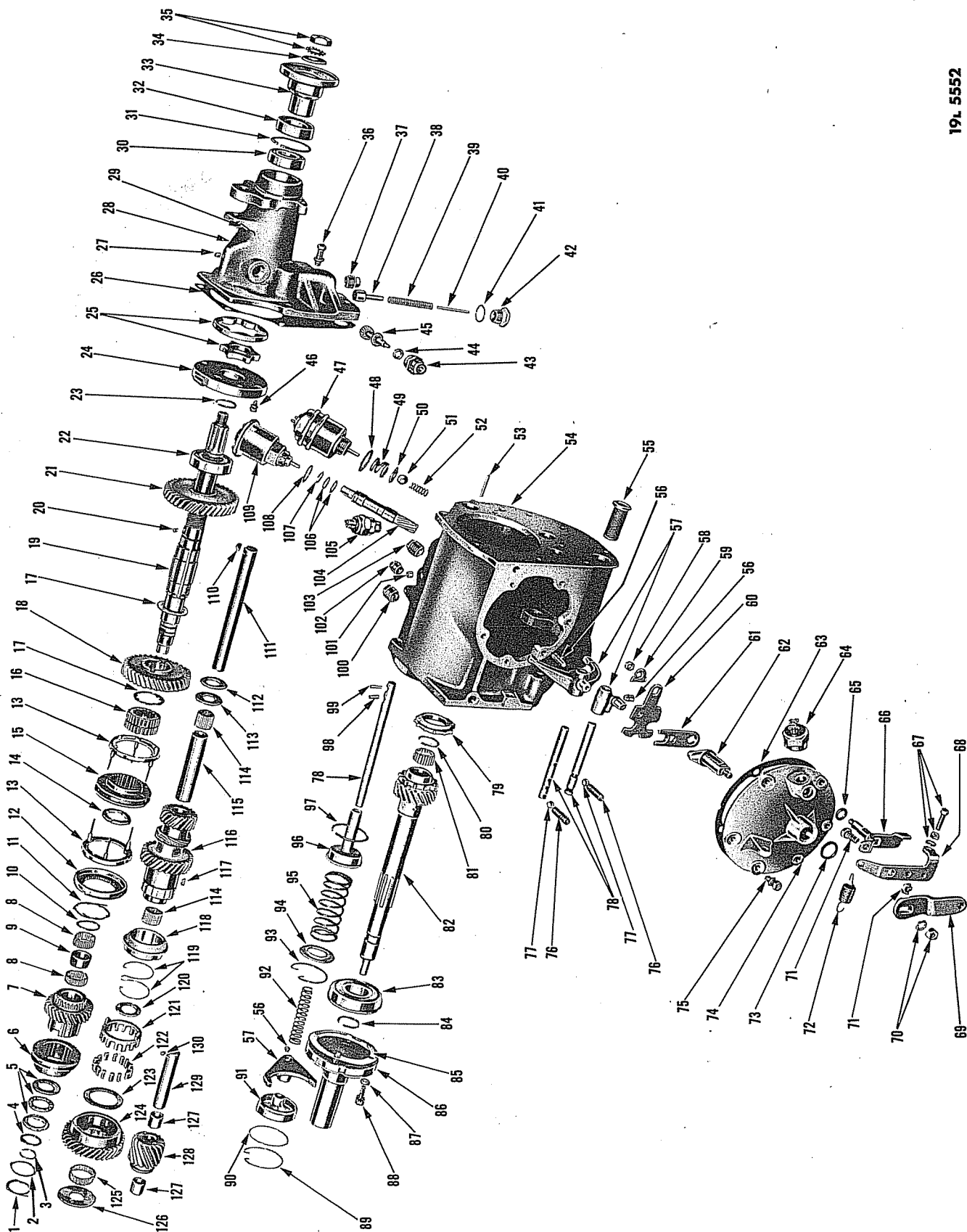
GROUP 21 - TRANSMISSION



19x4038B

TRANSMISSION (3 SPEED) (1/2, 3/4 and 1 TON) (B-1 SERIES) (EXPLODED VIEW)

Plate 21-1



19L 5552

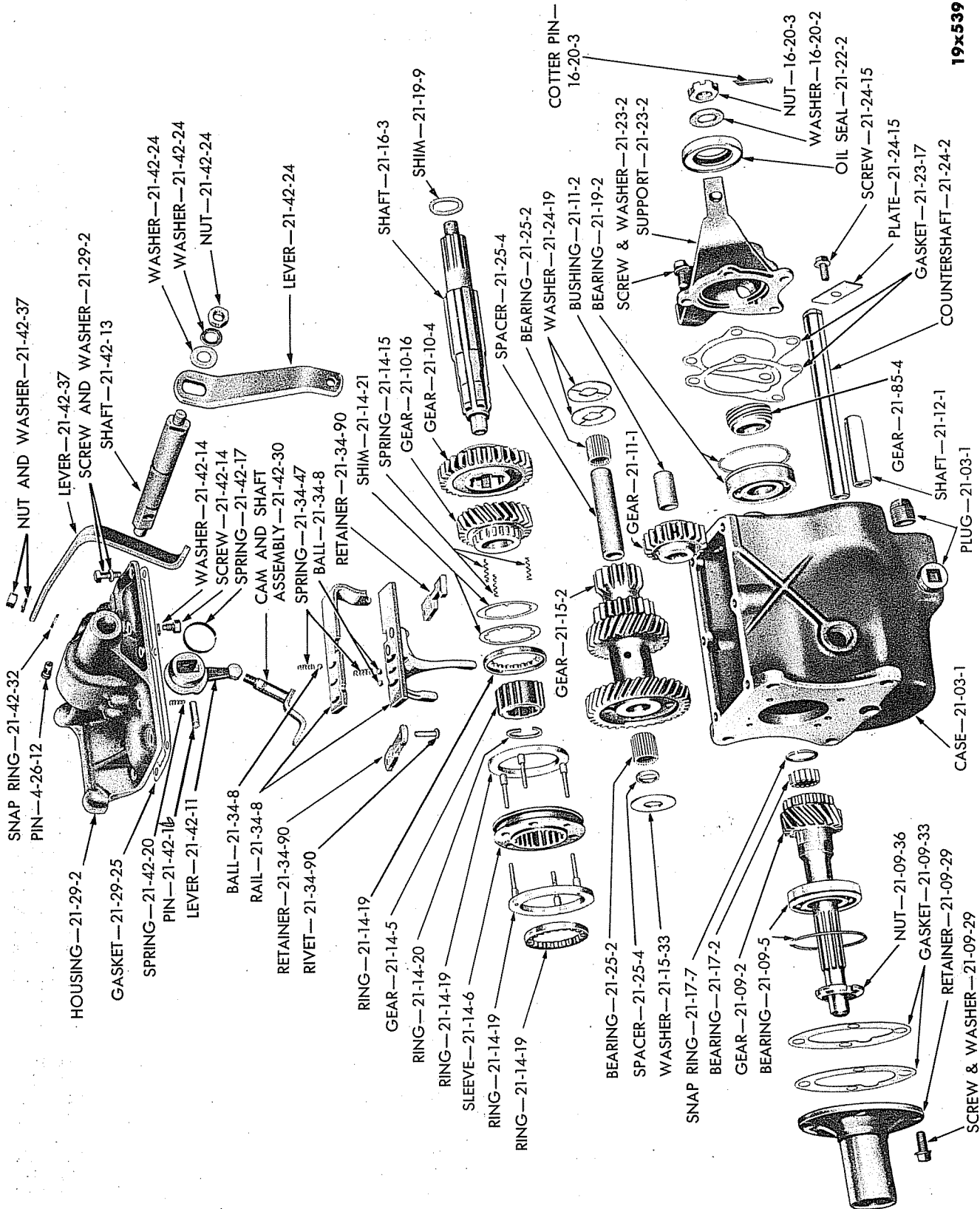
TRANSMISSION (TRUCK-O-MATIC) (EXPLODED VIEW)

Plate 21-2

Plate 21-2

TRANSMISSION (TRUCK-O-MATIC) (EXPLODED VIEW)

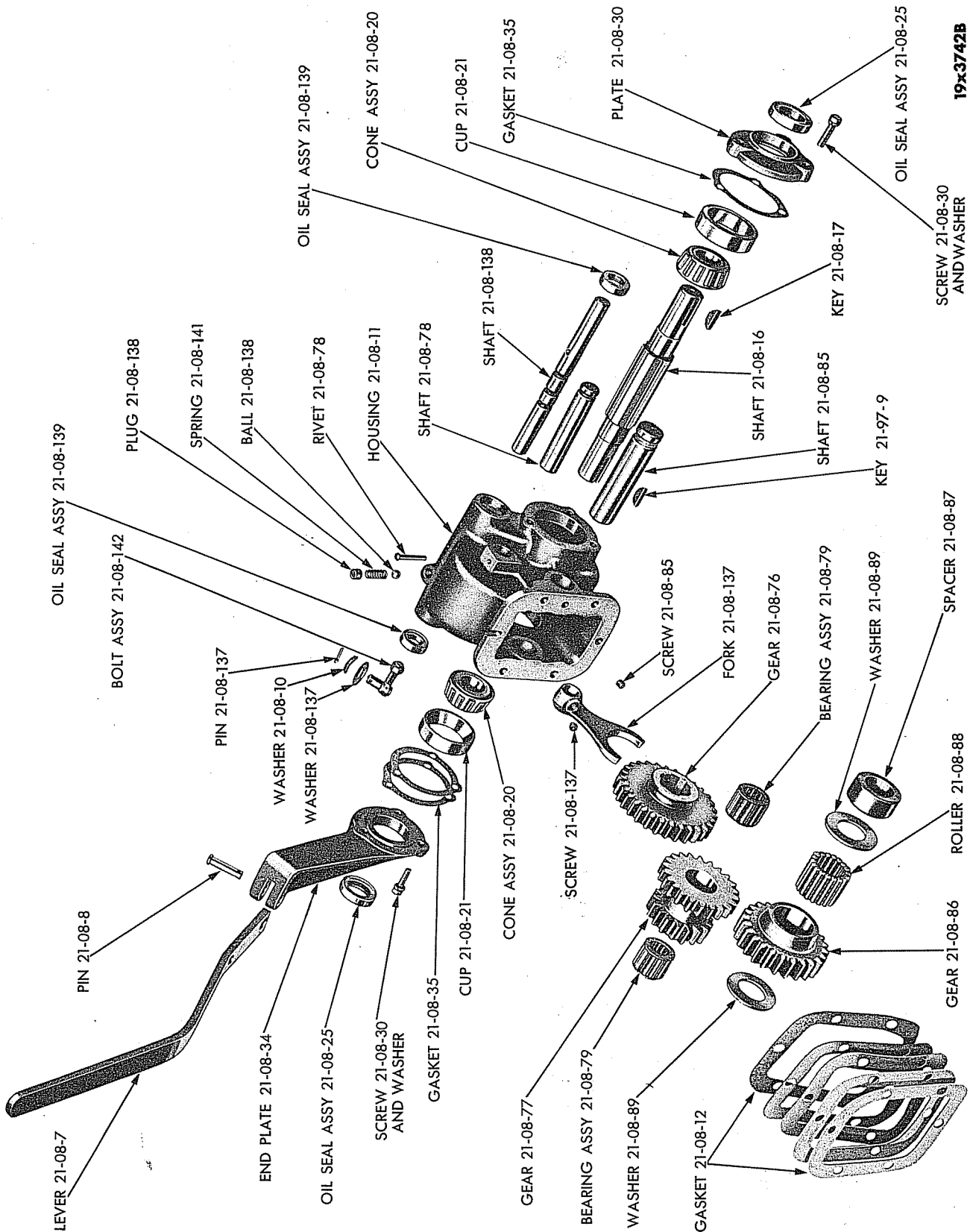
Ref. No.	Name	Part Type Code	Ref. No.	Name	Part Type Code
1	Spring	21-10-97	66	Lever Assembly	21-42-44
2	Washer	21-10-98	67	Bolt, Nut, Washer	21-42-37
3	Snap Ring	21-10-81	68	Lever	21-42-37
4	Washer	21-10-33	69	Lever	21-42-23
5	Bearing Assembly	21-10-32	70	Nut and Washer	21-42-23
6	Sleeve (serviced in Sleeve and Ring Package)	21-01-21	71	Nut and Bolt	21-42-38
7	Gear	21-10-78	72	Spring	21-42-57
8	Roller	21-10-35	73	Seal	21-29-24
9	Spacer	21-10-36	74	Housing	21-29-3
10	Washer	21-10-37	75	Bolt and Washer	21-29-3
11	Spring	21-14-15	76	Spring	21-42-33
12	Ring, Outer	21-14-19	77	Ball	21-29-3
13	Ring, Inner	21-14-19	78	Rail	21-34-8
14	Washer	21-10-86	79	Ring	21-10-96
15	Sleeve	21-14-6	80	Snap Ring	21-17-7
16	Gear	21-14-5	81	Roller	21-17-2
17	Washer	21-10-5	82	Pinion	21-09-2
18	Gear	21-10-3	83	Bearing	21-09-5
19	Shaft	21-16-3	84	Snap Ring	21-09-22
20	Pin	21-118-34	85	Gasket	21-09-33
21	Gear	21-10-72	86	Retainer	21-09-29
22	Bearing	21-19-2	87	Grommet	21-09-32
23	Snap Ring	21-19-15	88	Bolt	21-09-31
24	Retainer	21-23-2	89	Snap Ring	21-34-85
25	Rotor Assembly	21-118-33	90	Seal	21-34-77
26	Gasket	21-04-2	91	Guide	21-34-75
27	Plug	21-04-13	92	Spring	21-39-6
28	Extension	21-04-1	93	Snap Ring	21-120-11
29	Pin	4-06-1	94	Retainer	21-120-10
30	Bearing	21-04-11	95	Spring	21-120-7
31	Snap Ring	21-04-12	96	Piston Assembly	21-120-3
32	Oil Seal	21-22-2	97	Ring	21-120-4
33	Flange	16-20-1	98	Pin	21-113-9
34	Washer	16-20-2	99	Pin	21-120-6
35	Nut and Washer	16-20-3	100	Plug	21-03-15
36	Bolt and Washer	21-04-1	101	Plug	21-03-15
37	Plug	21-04-1	102	Plug	21-03-1
38	Valve	21-122-5	103	Plug	21-03-1
39	Spring	21-122-6	104	Pinion	21-75-10
40	Pin	21-122-11	105	Switch	21-113-3
41	Gasket	21-122-8	106	Washer	21-75-11
42	Plug	21-122-7	107	Snap Ring	21-75-14
43	Sleeve Assembly	21-85-76	108	Gasket	21-75-6
44	Oil Seal	21-85-56	109	Governor Assembly	21-75-1
45	Pinion	21-85-5	110	Key	21-24-2
46	Bolt	21-23-2	111	Countershaft	21-24-2
47	Solenoid Assembly	21-79-3	112	Washer	21-15-33
48	Gasket	21-79-4	113	Plate	21-15-34
49	Spring	21-83-4	114	Roller	21-25-2
50	Washer	21-83-14	115	Spacer	21-25-4
51	Ball	21-83-6	116	Gear	21-15-2
52	Spring	21-83-6	117	Key	21-24-25
53	Pin	21-83-6	118	Sleeve	21-24-25
54	Case	21-03-1	119	Spring	21-49-21
55	Strainer	21-117-1	120	Washer	21-15-38
56	Screw	21-39-20	121	Retainer	21-49-5
57	Fork	21-39-3	122	Roller	21-49-3
58	Nut	21-42-44	123	Washer	21-49-25
59	Plate	21-42-47	124	Gear	21-28-2
60	Plate	21-42-53	125	Roller	21-28-8
61	Yoke	21-42-41	126	Washer	21-15-33
62	Lever	21-42-11	127	Bushing	21-11-2
63	Gasket	21-29-25	128	Gear	21-11-1
64	Switch	8-56-2	129	Shaft	21-12-1
65	Seal	21-42-31	130	Key	21-12-1



19x5393

TRANSMISSION (3 SPEED) (1/2, 3/4 and 1 TON) (B-2, B-3 and B-4 SERIES) (EXPLODED VIEW)

Plate 21-3



19x3742B

POWER TAKE-OFF

Plate 21-5

19L6431

WINCH - MODEL MU-2

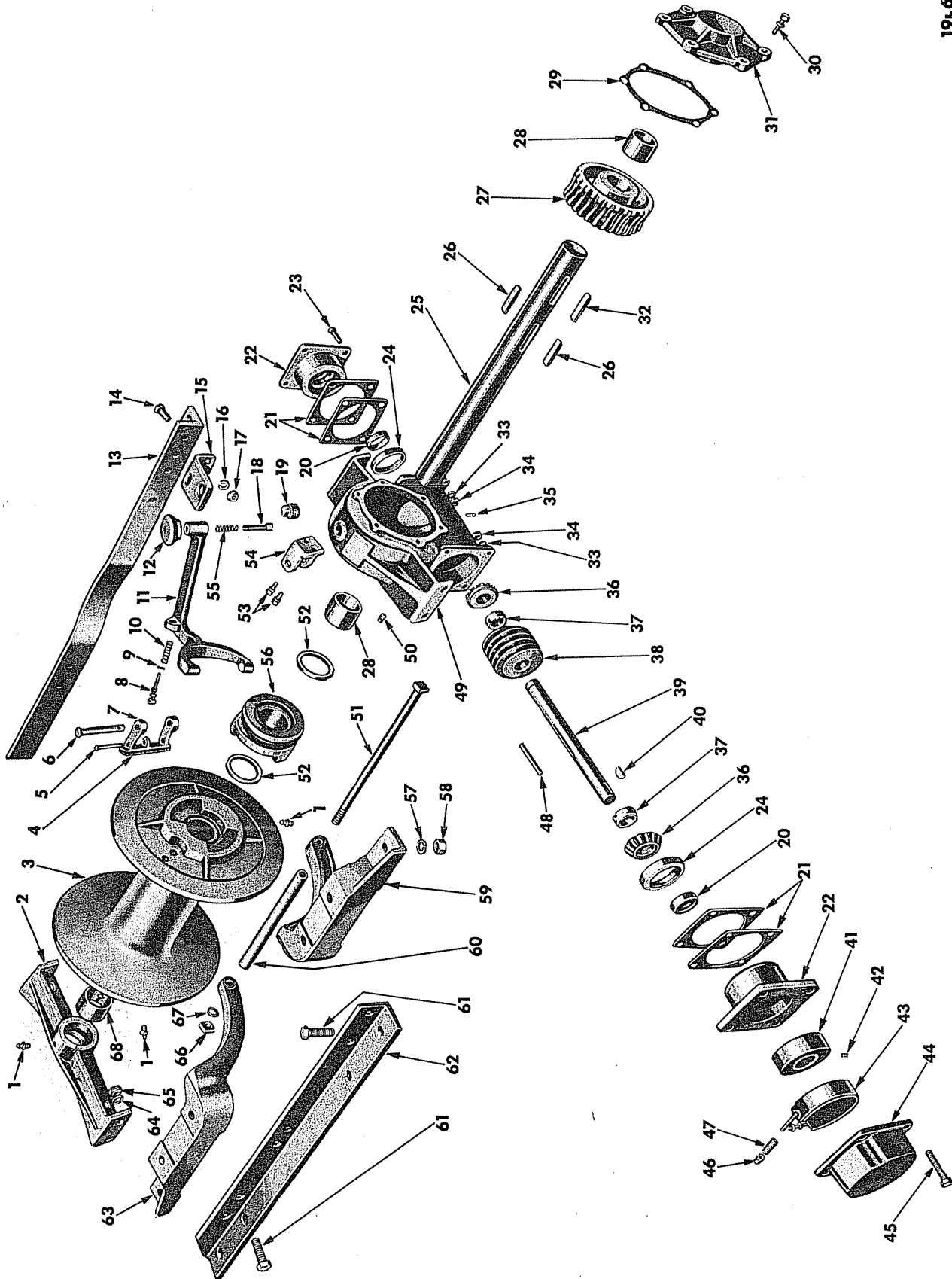


Plate 21-6

Plate 21-6

WINCH - MODEL MU-2

Ref. No.	Name	Braden Winch Co. Part Number	Chrysler Part Type Code
1	Fitting	---	---
2	Bracket, w/Bushing or Bearing Leg, w/Bushing	MU2-133-O	---
3	Drum, Cable	M2-135	---
4	Drag, Brake Block, w/Lining	MU-131-O	---
5	Pin, Drag Brake Link	---	21-97-91
6	Pin, Clutch Shifter Fork Pivot	MU-143B	---
7	Drag, Brake Block, w/Lining	MU-131-O	---
8	Link, Drag Brake	UU-131L	---
9	Pin, Cotter	---	21-97-91
10	Spring, Drag Brake	A-143-S	---
11	Fork, Clutch Shifter	MU2-143	---
12	Knob, Clutch Shifter Fork Handle	MU-143D	---
13	Bracket or Rear Base Angle	MU2-146R	---
14	Bolt	---	---
15	Bracket, Clutch Shifter Fork Locating	MU2-143C	---
16	Washer, Lock	---	---
17	Nut	---	---
18	Shaft, Shifter Fork Handle	MU-143E	---
19	Plug, Vented	20-E116H	---
20	Oil Seal, Worm Shaft	MU-149A	---
21	Gasket, Worm Bearing Retainer	MU-149G	---
22	Retainer, Worm Bearing	MU-149	---
23	Bolt or Screw	---	---
24	Cup, Worm Thrust	---	21-97-55
25	Shaft, Drum	MU2-136	---
26	Key, Clutch	MU-141A	---
27	Gear, Worm	MU-144G	---
28	Bushing, Cover or Housing	MU-134B	---
29	Gasket, Cover or Housing	MU-144G	---
30	Screw and Washer	---	---
31	Cover, w/Bushing	MU-144-O	---
32	Key, Worm Gear	MU-101A	---
33	Washer, Lock	---	---
34	Nut	---	---
35	Screw	---	---
36	Cone and Rollers, Worm Thrust Bearing	---	21-97-56
37	Seal, Worm Grease	MU-149A	---
38	Worm	MU-100R	---
39	Shaft, Worm	MU2-202	---
40	Key, Woodruff	---	---
41	Drum, Safety Brake	MU-151	---
42	Screw, Set	---	---
43	Band, Brake	MU-152-O	---
44	Housing, Safety Brake	MU-248	---
45	Screw	---	---
46	Nut	---	---
47	Spring, Brake Band	MU-156	---
48	Key, Worm Shaft	MU-100A	---
49	Housing, w/Bushing	MU2-134-O	---
50	Plug	---	---
51	Bolt	MU2-184B	---
52	Ring, Drum Retaining	MU-139	---
53	Screw	---	---
54	Bracket, Shifter Fork	MU2-143A	---
55	Spring, Clutch Shifter Fork	MU-143S	---
56	Clutch, Sliding	M2-141	---
57	Washer, Lock	---	---
58	Nut	---	---
59	Guide	MU2-284L	---
60	Spacer, Cable Guide	---	21-97-122
61	Bolt	---	---
62	Angle, Front Base	MU2-146F	---
63	Guide	MU2-284R	---
64	Washer, Lock	---	---
65	Nut	---	---
66	Nut	---	---
67	Washer, Lock	---	---
68	Bushing, Bracket or Leg	MU-133B	---

Note: Parts identified by name only are standard parts — order by description.

CODE	PART NAME AND DESCRIPTION	SERIES NO.	MODEL CODES		PART NO.
			WDX	PW	
TRANSMISSION					
NOTE: Parts with single dagger (†) are used on "up to" type transmissions identified as having drain plug in center section of transmission case going in at approximately 30° angle to bottom of case.					
NOTE: Parts with double dagger (‡) are used on after type transmissions identified as having drain plug in rear of transmission case going in parallel to bottom of case.					
TRANSMISSION PACKAGES					
21-01-3	GASKET PACKAGE	-	1	1	†1063 659 ‡1243 622
TRANSMISSION ASSEMBLY (LESS COVER AND CONTROLS)					
21-02-1	TRANSMISSION	-	1	1	† 921 869
	Bolt, 9/16"-12 x 1 3/4"	-	4	4	‡1265 422 120 896
	Washer, lock	-	4	4	120 898
TRANSMISSION CASE					
21-03-1	CASE	-	1	1	† 921 853
	Plug, pipe (drain)	-	-	1	‡1265 423
	Plug, pipe (filler)	-	1	1	103 869
	Plug, pipe (filler)	-	1	1	† 103 869
	Plug, pipe (filler)	-	-	1	‡ 103 875
POWER TAKE-OFF					
21-08-1	COVER	-	2	2	556 875
	Bolt, 3/8"-16 x 1/2"	-	1	1	121 852
	Bolt	-	11	11	122 119
	Washer, lock	-	12	12	120 382
21-08-3	GASKET, Cover	-	2	2	567 500
21-08-5	POWER TAKE-OFF, Assembly	-	1	1	†1189 419
	Bolt, 3/8"-16 x 1"	-	-	1	‡1265 551
	Bolt, 3/8"-16 x 1 1/4"	-	6	6	120 233
	Washer, lock	-	★	★	122 145
	Washer, plain	-	12	12	120 382
	Washer, plain	-	1	1	120 394
21-08-6	SCREW (to trans.) (long)	-	★	★	1191 472
	(to trans.) (upper)	-	1	1	‡1265 554
21-08-7	LEVER	-	1	1	924 237
21-08-8	PIN, Lever	-	1	1	926 167
	Pin, cotter	-	1	1	119 209
21-08-9	LOCK, Lever, Complete	-	1	1	1189 834
	Bolt, 1/4"-20 x 5/8"	-	2	2	120 854
21-08-10	WASHER, Lever Anti-Rattle	-	1	1	905 206
21-08-11	HOUSING	-	1	1	†1190 429
		-	-	1	‡1265 552
21-08-12	GASKET (to trans.)	-	★	★	917 073
21-08-13	WASHER, Plain (to trans. screw) (upper)	-	-	1	‡1262 273
21-08-15	TUBE, Rear Drive Shaft, w/YOKE (front) (79 1/2" long)	-	1	1	1189 453
	(rear) (44 5/8" long)	-	1	1	1189 455
21-08-16	SHAFT, Drive	-	1	1	1193 751
21-08-17	YOKE, Rear Drive Shaft	-	1	1	1189 444
	Key, Woodruff	-	1	1	271 422
21-08-18	SCREW, Rear Drive Shaft Yoke	-	1	1	1189 422
21-08-20	CONE, Drive Shaft Bearing	-	2	2	1193 749
21-08-21	CUP, Drive Shaft Bearing	-	2	2	55 584
21-08-22	HOUSING, Rear Drive Shaft Center Bearing	-	1	1	564 721
21-08-23	INSULATOR, Rear Drive Shaft Center Bearing Housing	-	1	1	562 119
21-08-25	OIL SEAL, Drive Shaft	-	2	2	1193 752
21-08-26	BEARING, Drive Shaft Center Ball	-	1	1	564 728

★ Indicates use as required.

‡ Indicates parts not listed in any previous parts books.

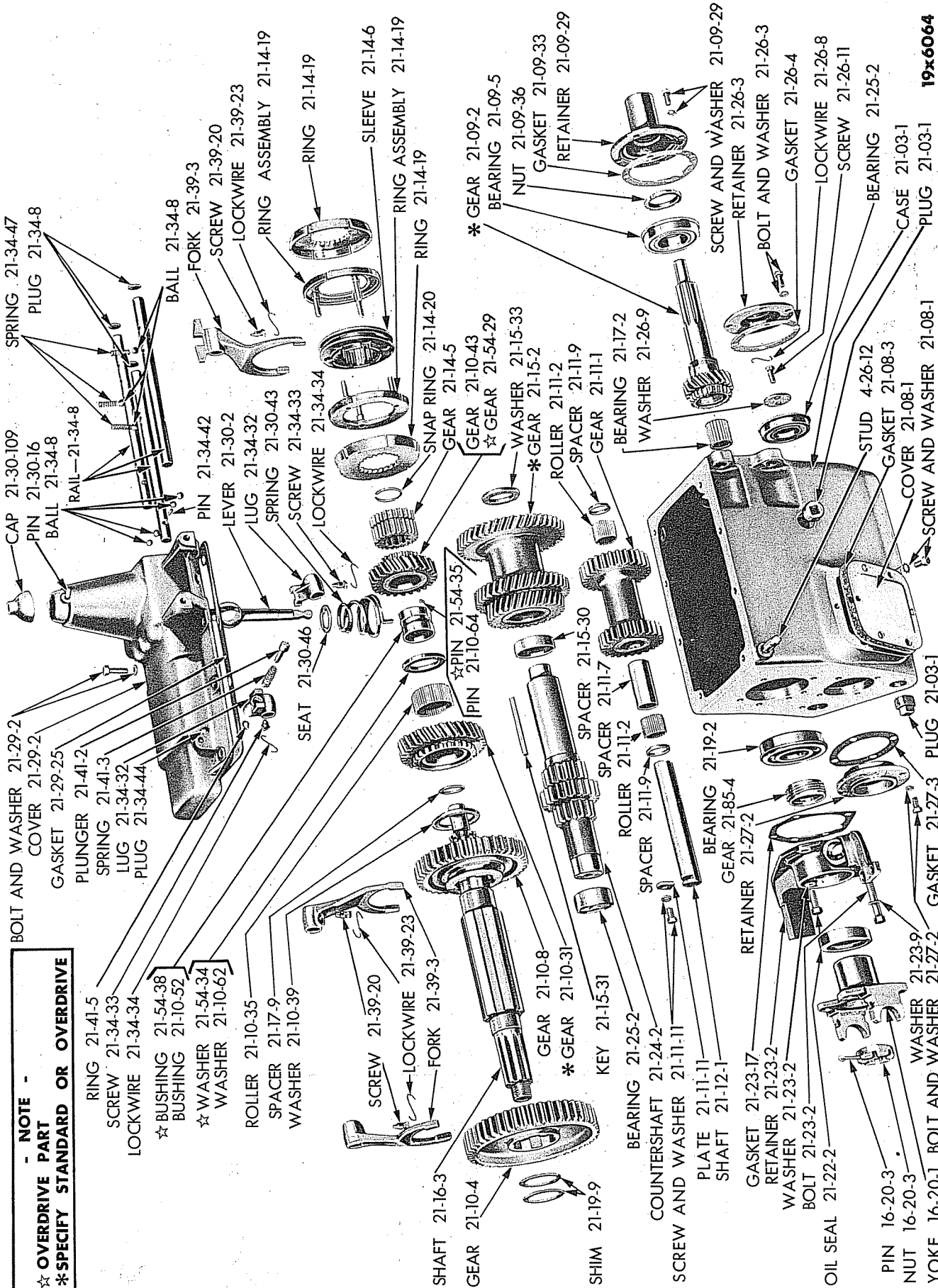
Series No. (1 indicates B-1 Series) (2 indicates B-2 Series) (3 indicates B-3 Series) (4 indicates B-4 Series)

Where no Series No. is shown part is for B-1, B-2, B-3 and B-4 Series.

January 30, 1953

Prices and specifications subject to change without notice.

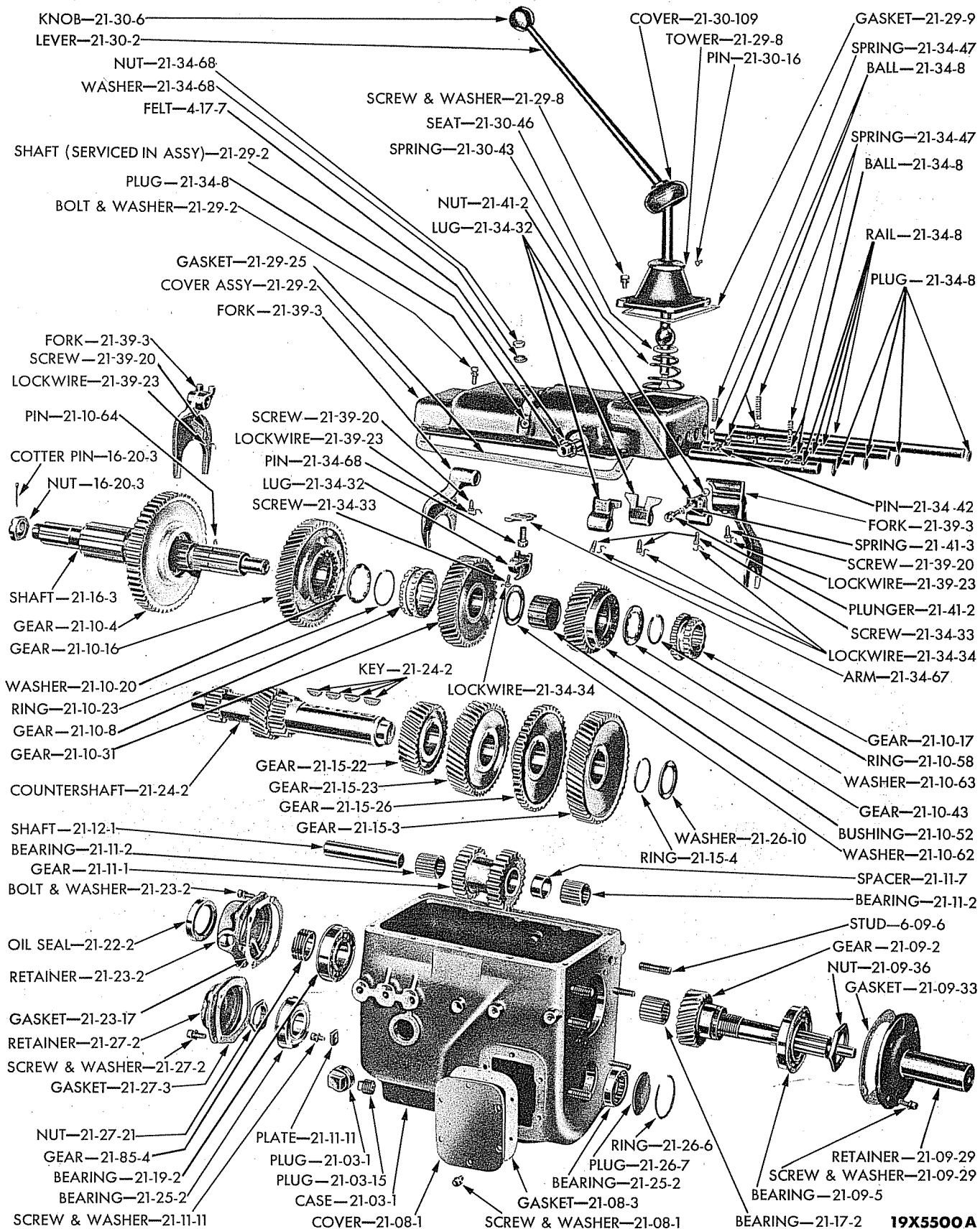
Printed in U.S.A.



- NOTE -
 ☆ OVERDRIVE PART
 * SPECIFY STANDARD OR OVERDRIVE

TRANSMISSION (TYPICAL OF 1265 634, 1266 729, 1272 974 and 1274 648) (EXPLODED VIEW)

Plate 21-7



19X5500A

Plate 21-8

TRANSMISSION (5 SPEED) (4 TON) (EXPLODED VIEW)

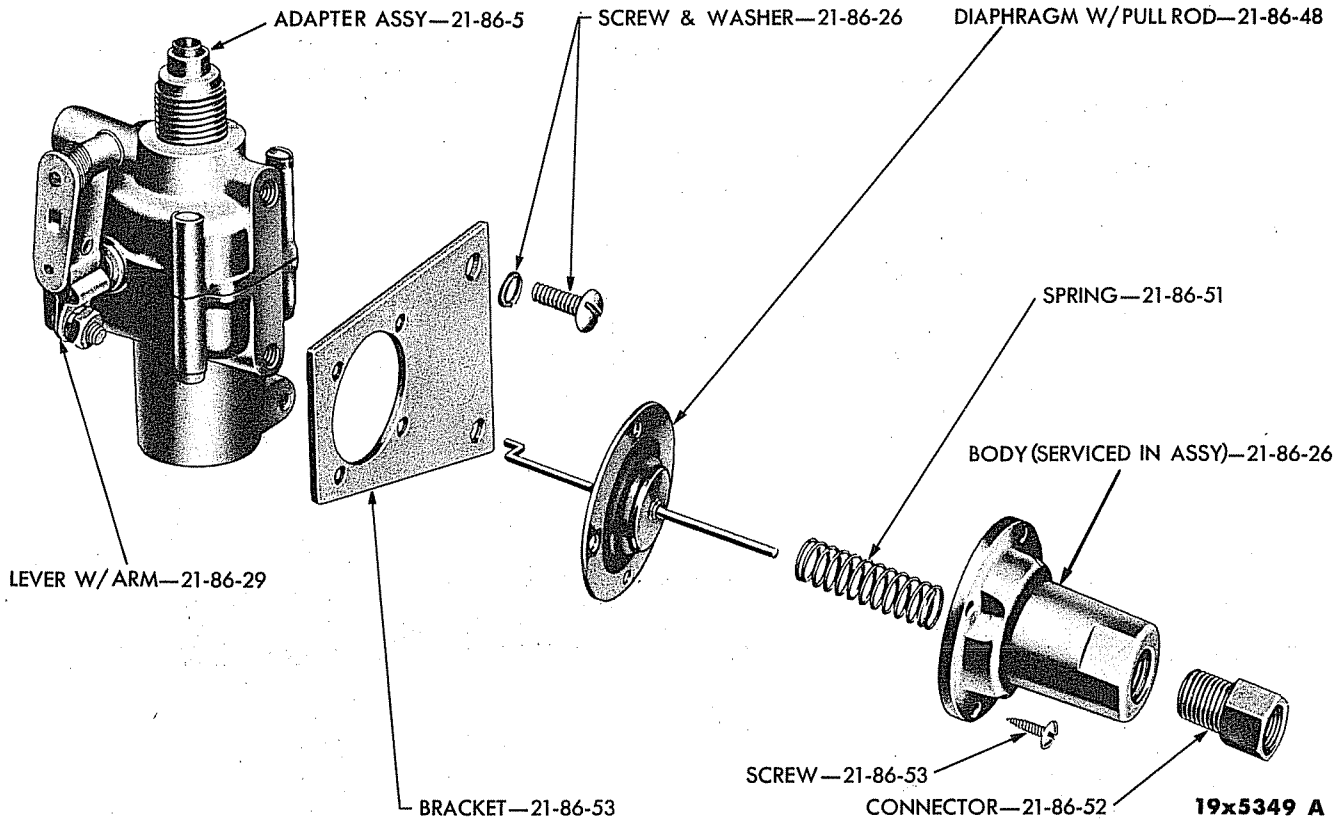
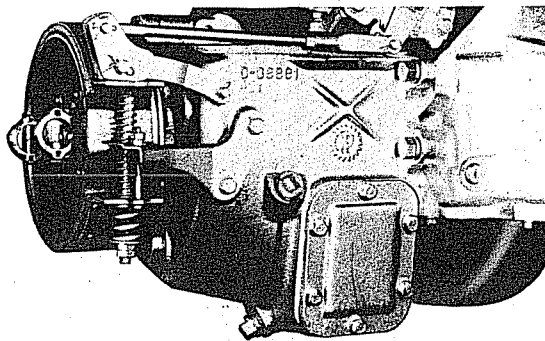


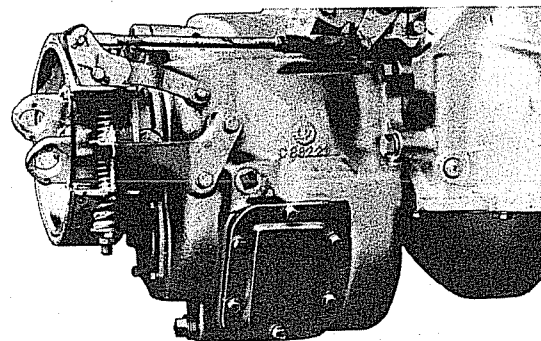
Plate 21-9

SPEEDOMETER ADAPTER AND SHIFT DIAPHRAGM (EXPLODED VIEW)



4 SPEED SPUR GEAR TYPE TRANSMISSION IDENTIFICATION

4 Speed spur gear type transmission has power take-off cover located in a forward position of transmission case, and drain hole plug going in at 30° angle to bottom of case.



4 SPEED HELICAL GEAR SYNCHROMESH TYPE TRANSMISSION IDENTIFICATION

4 Speed helical gear synchromesh type transmission has power take-off cover located in rear position of transmission case, and drain hole plug going in parallel to bottom of case.

* * * * *

NOTE - 5-Speed transmission with overdrive is stamped "O.D." on transmission case rear face left of drain plug.

NOTE - 5-Speed transmission without overdrive is stamped "R" on transmission case rear face left of drain plug.

19x5515

Plate 21-10

TRANSMISSION IDENTIFICATION

CODE	PART NAME AND DESCRIPTION	SERIES NO.	MODEL CODES		PART NO.	
			WDX	PW		
GEARSHIFT RAIL - Cont'd						
21-34-8	RAIL Pin, cotter.	-	1	1	† 103 399	
21-34-32	END, Reverse Shift	-	1	1	556 902	
21-34-41	PLUNGER, Interlock.	-	2	2	556 882	
21-34-42	PIN, Interlock	-	1	1	556 890	
21-34-43	STOP, Interlock Pin.	-	1	1	517 364	
21-34-47	SPRING, Poppet	-	3	3	517 373	
GEARSHIFT FORK						
21-39-3	FORK, First and Second Shift	-	1	1	† 556 842	
	Third and Direct Shift	-	-	1	†1090 149	
	Reverse Shift	-	1	1	† 556 843	
		-	-	1	†1090 150	
21-39-20	SCREW (fork to rail)	-	1	1	556 844	
21-39-23	LOCKWIRE, Screw.	-	3	3	517 362	
		-	3	3	572 551	
SPEEDOMETER CABLE						
21-84-1	CABLE (w/SHAFT and HOUSING) (up to serial No. 83919725. Det. Built and 88766262 S.L. Built) (96" lgh.)	1, 2	1	1	926 079	
	(after serial No. 83919725 Det. Built and 88766262 S.L. Built) (96" lgh.)	2, 3, 4	-	1	1271 148	
	CLIP.	-	1	1	120 521	
	Bolt, 1/4" -28 x 1".	-	1	1	123 461	
	Nut	-	1	1	120 367	
	Washer, lock.	-	1	1	120 380	
	Washer, plain	-	1	1	120 392	
21-84-4	SHAFT, Drive (96" lgh.)	-	1	1	926 080	
21-84-5	LUBRICANT (8 oz. tube)	-	★	★	1243 632	
SPEEDOMETER GEAR AND PINION						
GEAR, Drive (see following chart)						
PINION, Drive (see following chart)						
4.89 to 1 Ratio						
	Tire Size	Ply	Gear	No. Teeth	Pinion	No. Teeth
	7.50 x 16	8	561 816	5	1268 649	16
	9.00 x 16	8	561 816	5	929 917	14
5.83 to 1 Ratio						
	Tire Size	Ply	Gear	No. Teeth	Pinion	No. Teeth
	7.50 x 16	8	561 651	4	1188 168	15
	9.00 x 16	8	561 651	4	929 917	14
21-85-27	SPACER, Gear (in transfer case).	-	1	1	927 374	
	(in trans.)	-	1	1	† 556 941	
21-85-48	PLUG, Pinion Hole (in trans.)	-	1	1	928 698	
21-85-56	OIL SEAL, Pinion (in transfer case).	-	1	1	652 840	
21-85-60	NUT, Drive Pinion Retaining (in transfer case).	-	1	1	929 918	
21-85-68	BUSHING, Drive Pinion (in trans.)	-	1	1	† 516 268	
	(in transfer case).	-	1	1	516 268	

★Indicates use as required.

Prices and specifications subject to change without notice.

☐Indicates parts not listed in any previous parts books.

Series No. (1 indicates B-1 Series) (2 indicates B-2 Series) (3 indicates B-3 Series) (4 indicates B-4 Series)

Where no Series No. is shown part is for B-1, B-2, B-3 and B-4 Series.

CODE	PART NAME AND DESCRIPTION	SERIES NO.	MODEL CODES		PART NO.
			WDX	PW	
WINCH PARTS					
Note: Orders for winch assembly and component parts should be sent direct to Braden Winch Co., Tulsa, Oklahoma. See illustration pages 21-5A and 21-5B for Braden Winch Co. part numbers.					
Note: Orders for winch driving parts such as power take-off, universal joint and shaft should be sent direct to Chrysler Corporation, Parts Division.					
21-97-3	BOLT, to Frame	-	2	2	660 378
	Bolt, 1/2" -20 x 1 1/2" (to bumper)	-	2	2	120 234
	Bolt, 1/2" -20 x 1 1/2" (to frame)	-	2	2	120 234
	Nut	-	6	6	120 371
	Washer, lock	-	6	6	120 384
21-97-5	SHAFT, Universal Drive	-	1	1	921 905
21-97-9	JOINT, Universal Drive, Complete (front)	-	1	1	1263 955
	(rear)	-	1	1	1263 958
	Fitting, lubricant (rear)	-	1	1	191 758
	Fitting, lubricant (front)	-	1	1	110 347
	Key, Woodruff	-	2	2	271 422
21-97-11	SEAL, Universal Joint	-	8	8	928 692
21-97-12	RETAINER, Universal Joint Seal	-	8	8	928 693
21-97-14	SNAP RING, Universal Joint Cross Bushing (after serial No. 88759859)	-	8	8	1263 960
21-97-15	BUSHING, Universal Joint Cross	-	8	8	928 695
21-97-16	CROSS, Universal Joint	-	2	2	928 694
21-97-17	CABLE, Assembly	-	1	1	930 382
21-97-18	BLOCK, Cable Snatch	-	1	1	915 815
21-97-20	PLATE, Universal Joint Cross Bushing Cover (up to serial No. 88759859)	-	1	1	928 696
21-97-21	U-BOLT, Cable to Winch	-	1	1	916 342
21-97-22	WASHER, Cable to Winch U-Bolt Plain	-	2	2	35 221
	Nut	-	2	2	120 369
	Washer, lock	-	2	2	120 382
21-97-24	SCREW, Universal Joint Cross Bushing Cover Plate (up to serial No. 88759859)	-	16	16	928 697
21-97-55	CUP, Worm Thrust Bearing	-	2	2	927 013
21-97-56	CONE, Worm Thrust Bearing	-	2	2	927 014
21-97-91	PIN, Brake Shoe Link	-	1	1	583 737
	Pin, cotter	-	1	1	108 630
21-97-122	SPACER, Cable Guide	-	1	1	926 750
21-97-128	YOKE, Universal Drive Shaft Rear (up to serial No. 88759859) (power take-off end)	-	1	1	928 690
	Rear (after serial No. 88759859) (power take-off end)	-	-	1	1263 957
	Front (up to serial No. 88759859) (winch end)	-	1	1	1088 211
	Front (after serial No. 88759859) (winch end)	-	-	1	1263 956
	Front (up to serial No. 88759859)	-	1	1	928 690
	Front (after serial No. 88759859)	-	-	1	1263 957
	Rear (up to serial No. 88759859)	-	1	1	928 691
	Rear (after serial No. 88759859)	-	-	1	1263 959
21-97-129	SCREW, Universal Drive Shaft Yoke	-	2	2	1189 422
21-97-133	COLLAR, Universal Drive Shaft w/SCREW	-	1	1	1088 378
	SCREW, Universal Drive Shaft Collar	-	1	1	917 500
21-97-134	SCREW, Universal Drive Shaft Collar	-	1	1	1088 377
21-97-135	LOCKWIRE, Universal Drive Shaft Collar Screw	-	1	1	586 050
21-97-136	LOCKWIRE, Universal Joint Set Screw	-	1	1	586 050
21-97-137	PIN, Universal Joint Shear	-	★	★	1189 423
	Pin, cotter	-	★	★	103 373
21-97-140	FITTING, Universal Joint Cross Grease	-	2	2	930 200
TRANSFER CASE					
21-100-1	CASE, Complete	-	1	1	1188 941
	CASE, w/o Gears and Bearings	-	1	1	1089 317
	Plug, pipe	-	1	1	103 875
	Plug, pipe	-	1	1	103 869
	Plug, pipe	-	1	1	143 932

★ Indicates use as required.

Prices and specifications subject to change without notice.

☐ Indicates parts not listed in any previous parts books.

Series No. (1 indicates B-1 Series) (2 indicates B-2 Series) (3 indicates B-3 Series) (4 indicates B-4 Series)

Where no Series No. is shown part is for B-1, B-2, B-3 and B-4 Series.

November 5, 1953 Supersedes January 30, 1953 Page 21-12

Printed in U.S.A.

CODE	PART NAME AND DESCRIPTION	SERIES NO.	MODEL CODES													PART NO.		
			B	C	D	F	G	H & HH	FM	GM	HM & HHM	J	JM	K	KM		R	T
TRANSMISSION ASSEMBLY (LESS COVER AND CONTROLS) - Cont'd																		
21-02-1	TRANSMISSION																	
	(4 Speed) (spur gear type)																	
	(w/Fluid Drive)	2, 3	1	1	1	-	-	-	-	-	-	-	-	-	-	-	-	1268 027
	(4 Speed) (helical gear type)																	
	(w/Fluid Drive).	3, 4	1	1	1	-	-	-	-	-	-	-	-	-	-	-	-	1272 273
	(4 Speed) (TRUCK-O-MATIC)	4	1	1	-	-	-	-	-	-	-	-	-	-	-	-	-	1326 764
	(3 Speed) (w/o Fluid Drive)	-	-	-	1	-	-	-	-	-	-	-	-	-	-	-	-	1194 971
	(3 Speed) (w/Fluid Drive)	-	-	-	1	-	-	-	-	-	-	-	-	-	-	-	-	1268 031
	(4 Speed) (spur gear type)	-	-	-	-	1	-	1	1	-	1	-	-	-	-	-	-	1194 252
	(4 Speed) (helical gear type)																	
	(1265 987 Trans.) (Assembly no longer serviced, service component parts)	2	-	-	-	1	1	1	-	1	1	-	-	-	-	-	-	-----
	(4 Speed) (helical gear type)																	
	(B-3-F and B-3-G up to engine No. T314-10521, B-3-H and B-3-HH up to engine No. T316-8058, B-3-HM and B-3-HHM up to engine No. T328-1482) (1265 987 Trans. Assembly no longer serviced, service component parts)	3	-	-	-	1	1	1	-	1	1	-	-	-	-	-	-	-----
	(4 Speed) (helical gear type)	2, 3, 4	-	-	-	1	1	1	-	1	1	-	-	-	-	-	-	1272 973
	(5 Speed) (w/o Overdrive)	2	-	-	-	1	1	1	-	1	1	1	1	1	-	-	-	1265 634
	(5 Speed) (w/o Overdrive)																	
	(B-3-F and B-3-G up to engine No. T314-10545, B-3-H and B-3-HH up to engine No. T316-5819; B-3-HM and B-3-HHM up to engine No. T328-1354, B-3-J and B-3-K up to engine No. T318-10006, B-3-JM and B-3-KM up to engine No. T330-1804)	3	-	-	-	1	1	1	-	1	1	1	1	1	-	-	-	1265 634
	(5 Speed) (w/o Overdrive)																	
	(B-3-F and B-3-G after engine No. T314-10545, B-3-H and B-3-HH after engine No. T316-5819, B-3-HM and B-3-HHM after engine No. T328-1354, B-3-J and B-3-K after engine No. T318-10006, B-3-JM and B-3-KM after engine No. T330-1804)	3	-	-	-	1	1	1	-	1	1	1	1	1	-	-	-	1272 974
	(5 Speed) (w/o Overdrive)	4	-	-	-	1	1	1	-	1	-	1	-	1	-	-	-	1272 974
	(5 Speed) (synchromesh helical) (identified as having one (1) power take-off opening in case) (w/o Overdrive)	4	-	-	-	-	-	-	-	-	-	1	-	1	-	-	-	1272 974
	(5 Speed) (helical) (identified as having two (2) power take-off openings in case) (w/o Overdrive)	4	-	-	-	-	-	-	-	-	-	1	-	1	1	-	-	1501 891
	(4 Speed) (synchromesh helical) (School Bus)	4	-	-	-	-	-	-	-	-	-	1	-	-	-	-	-	1393 363

★ Indicates use as required.

Prices and specifications subject to change without notice.

□ Indicates parts not listed in any previous parts books.

Series No. (1 indicates B-1 Series) (2 indicates B-2 Series) (3 indicates B-3 Series) (4 indicates B-4 Series)

Where no Series No. is shown part is for B-1, B-2, B-3 and B-4 Series.

CODE	PART NAME AND DESCRIPTION	SERIES NO.	MODEL CODES													PART NO.			
			B	C	D	F	G	H & HH	FM	GM	HM & HHM	J	JM	K	KM		R	T	V
TRANSMISSION ASSEMBLY (LESS COVER AND CONTROLS) - Cont'd																			
21-02-1	TRANSMISSION (5 Speed) (w/Overdrive) (1266729 Trans. Assembly no longer serviced, service component parts)	2	-	-	-	-	-	1	-	-	1	1	1	1	-	-	-	-	-----
	(5 Speed) (w/Overdrive) (B-3-J and B-3-K up to engine No. T318-9344, B-3-JM and B-3-KM up to engine No. T330-1741) (1266 729 Trans. Assembly no longer serviced, service component parts)	3	-	-	-	-	-	-	-	-	1	1	1	1	-	-	-	-	-----
	(5 Speed) (w/Overdrive) (5 Speed) (synchromesh helical) (identified as having one (1) power take-off opening in case) (w/Overdrive)	2, 3, 4	-	-	-	-	-	1	-	-	1	-	1	-	-	-	-	-	1274 648
	(5 Speed) (helical) (identified as having two (2) power take-off openings in case) (w/Overdrive)	4	-	-	-	-	-	-	-	-	1	-	1	-	-	-	-	-	1274 648
	(5 Speed) (helical) (identified as having two (2) power take-off openings in case) (w/Overdrive)	4	-	-	-	-	-	-	-	-	1	-	1	-	-	-	-	-	E1502 900
	(5 Speed) (w/Overdrive) (5 Speed) (w/o Overdrive) (B-1-J and B-1-K up to engine No. T150-13335, B-1-JM and B-1-KM up to engine No. T154-1790) (1194 689 Trans. Assembly no longer serviced, service component parts)	1	-	-	-	-	-	-	-	-	1	1	1	1	-	-	-	-	1263 076
	(5 Speed) (w/o Overdrive) (B-1-R up to serial No. 81856241 Det. and 85025718 S. L. Built, B-1-T and B-1-V up to serial No. 81789975 except not used on 81789969 thru 81789973 Det. and 85000567 S. L. Built) (5 Speed) (w/o Overdrive) (1190 677 Trans. Assembly no longer serviced, service component parts)	1	-	-	-	-	-	-	-	-	1	1	1	1	-	-	-	-	-----
	(5 Speed) (w/o Overdrive)	1	-	-	-	-	-	-	-	-	1	1	1	1	-	-	-	-	1263 065
	(5 Speed) (w/o Overdrive) (5 Speed) (w/Overdrive) (5 Speed) (w/o Overdrive) (5 Speed) (w/Overdrive) (5 Speed) (w/Overdrive) (up to serial No. 8303804)	1	-	-	-	-	-	-	-	-	-	-	-	-	1	1	1	-	-----
	(5 Speed) (w/o Overdrive)	-	-	-	-	-	-	-	-	-	-	-	-	-	1	1	1	-	1263 109
	(5 Speed) (w/Overdrive)	-	-	-	-	-	-	-	-	-	-	-	-	-	1	1	1	-	1263 311
	(5 Speed) (w/o Overdrive)	-	-	-	-	-	-	-	-	-	-	-	-	-	-	-	-	1	1267 195
	(5 Speed) (w/Overdrive)	2	-	-	-	-	-	-	-	-	-	-	-	-	-	-	-	1	1270 651
	(5 Speed) (w/Overdrive) (up to serial No. 8303804)	3	-	-	-	-	-	-	-	-	-	-	-	-	-	-	-	1	1270 651
	(5 Speed) (w/Overdrive) (after serial No. 8303804)	3	-	-	-	-	-	-	-	-	-	-	-	-	-	-	-	1	E1393 689
	(5 Speed) (w/Overdrive)	4	-	-	-	-	-	-	-	-	-	-	-	-	-	-	-	1	E1393 689

★ Indicates use as required.

Prices and specifications subject to change without notice.

⊠ Indicates parts not listed in any previous parts books.

Series No. (1 indicates B-1 Series) (2 indicates B-2 Series) (3 indicates B-3 Series) (4 indicates B-4 Series)

Where no Series No. is shown part is for B-1, B-2, B-3 and B-4 Series.

CODE	3 SPEED TRANSMISSIONS	599 750	1263 859	1268 021	1194 971	1268 031
------	---------------------------------	---------	----------	----------	----------	----------

Note: All quantities are one (1) unless otherwise indicated in parenthesis.

TRANSMISSION CASE

21-03-1	CASE	599 291	599 291	599 291	599 291	599 291
	Plug (drain)	103 869	103 869	103 869	103 869	103 869
	(filler)	103 875	103 875	103 875	103 875	103 875

MAIN DRIVE GEAR

21-09-2	GEAR	599 620	1196 886	1196 755	1196 886	1196 755
21-09-5	BEARING	619 167	619 167	619 167	619 167	619 167
21-09-29	RETAINER	579 304	579 304	1263 837	579 304	1263 837
	Bolt, 5/16"-18 x 3/4" (4)	122 007	122 007	122 007	122 007	122 007
	Washer, lock (4)	138 485	138 485	138 485	138 485	138 485

21-09-33	GASKET, Retainer	1090 121	1090 121	1090 121	1090 121	1090 121
21-09-36	NUT, Bearing Lock	579 199	579 199	579 199	579 199	579 199

MAIN SHAFT GEARS

21-10-4	GEAR, Sliding First and Reverse	E1394 366	E1394 366	E1394 366	E1394 366	E1394 366
21-10-16	Second Speed	599 736	1196 897	1196 897	1196 897	1196 897

REVERSE IDLER GEARS

21-11-1	GEAR, w/BUSHING	E1394 367	E1394 367	E1394 367	E1394 367	E1394 367
21-11-2	BUSHING	579 197	579 197	579 197	579 197	579 197

REVERSE IDLER SHAFT

21-12-1	SHAFT	579 203	579 203	579 203	579 203	579 203
---------	-----------------	---------	---------	---------	---------	---------

CLUTCH GEAR AND SLEEVE

21-14-2	GEAR, w/SLEEVE	1115 595	-----	-----	-----	-----
21-14-5	GEAR	853 863	1270 335	1270 335	1270 335	1270 335
21-14-6	SLEEVE	856 464	1196 888	1196 888	1196 888	1196 888
21-14-15	SPRING (3)	-----	1196 898	1196 898	1196 898	1196 898
21-14-19	RING, Synchronizer Stop, w/PINS (outer) (2)	853 867	1196 894	1196 894	1196 894	1196 894
	RING, Synchronizer Stop (inner) (2)	-----	1196 890	1196 890	1196 890	1196 890

21-14-20	SNAP RING, Synchronizer (thin) (★)	631 823	631 823	631 823	631 823	631 823
	SNAP RING, Synchronizer (medium) (★)	631 824	631 824	631 824	631 824	631 824
	SNAP RING, Synchronizer (thick) (★)	631 825	631 825	631 825	631 825	631 825
	SNAP RING, Synchronizer (extra thick) (★)	640 332	640 332	640 332	640 332	640 332
21-14-21	SHIM, Synchronizer Stop Ring (★)	-----	1196 892	1196 892	1196 892	1196 892

COUNTERSHAFT GEARS

21-15-2	GEARS (cluster)	E1394 369	E1394 369	E1394 369	E1394 369	E1394 369
21-15-33	WASHER (.120 thk.) (★)	584 310	584 310	584 310	584 310	584 310
	(.124 thk.) (★)	579 198	579 198	579 198	579 198	579 198

MAIN SHAFT

21-16-3	SHAFT	599 734	599 734	599 734	599 734	599 734
---------	-----------------	---------	---------	---------	---------	---------

★ Indicates use as required.

Prices and specifications subject to change without notice.

E Indicates parts not listed in any previous parts books.

Series No. (1 indicates B-1 Series) (2 indicates B-2 Series) (3 indicates B-3 Series) (4 indicates B-4 Series)

Where no Series No. is shown part is for B-1, B-2, B-3 and B-4 Series.

CODE	3 SPEED TRANSMISSIONS	599 750	1263 859	1268 021	1194 971	1268 031
------	-----------------------	---------	----------	----------	----------	----------

Note: All quantities are one (1) unless otherwise indicated in parenthesis.

MAIN SHAFT PILOT BEARING

21-17-2	ROLLERS (14)	602 007	602 007	602 007	602 007	602 007
21-17-7	SNAP RING	601 108	601 108	601 108	601 108	601 108

MAIN SHAFT REAR BEARING

21-19-2	BEARING	579 211	579 211	579 211	579 211	579 211
21-19-9	SHIM (★)	----	1265 452	1265 452	1265 452	1265 452

MAIN SHAFT REAR BEARING OIL SEAL

21-22-2	OIL SEAL	600 420	600 420	600 420	600 420	600 420
---------	----------	---------	---------	---------	---------	---------

MAIN SHAFT REAR BEARING RETAINER

21-23-2	RETAINER	579 202	579 202	579 202	579 202	579 202
	Bolt, 3/8"-16 x 1" (4)	120 233	120 233	120 233	120 233	120 233
	Washer, lock (4)	120 382	120 382	120 382	120 382	120 382
21-23-17	GASKET	579 234	579 234	579 234	579 234	579 234

COUNTERSHAFT

21-24-2	COUNTERSHAFT	579 200	579 200	579 200	579 200	579 200
21-24-15	PLATE, Countershaft and Reverse Idler Lock	579 194	579 194	579 194	579 194	579 194
	Bolt, 5/16"-18 x 3/4"	122 007	122 007	122 007	122 007	122 007
	Washer, lock	120 214	120 214	120 214	120 214	120 214
21-24-19	WASHER, End (2)	579 230	579 230	579 230	579 230	579 230

COUNTERSHAFT BEARING

21-25-2	BEARING, Needle (44)	580 203	580 203	580 203	580 203	580 203
21-25-4	SPACER (center)	579 231	579 231	579 231	579 231	579 231
	(end)	579 193	579 193	579 193	579 193	579 193

GEARSHIFT HOUSING OR COVER

21-29-2	COVER	1	1263 860	1263 860	----	1263 860	----
	HOUSING	2, 3, 4	----	1263 810	1263 810	1263 810	1263 810
	Bolt, 3/8"-16 x 1/2" (6)	1	121 852	121 852	----	121 852	----
	(5/16"-18 x 7/8") (5)	2, 3, 4	----	120 229	120 229	120 229	120 229
	(5/16"-18 x 3/4")	2, 3, 4	----	122 007	122 007	122 007	122 007
	Washer, lock (6)	-	120 214	120 214	120 214	120 214	120 214
21-29-25	GASKET	-	579 217	579 217	579 217	579 217	579 217

GEARSHIFT LEVER

21-30-2	LEVER	1	1196 832	1196 832	----	1196 832	----
		2, 3, 4	----	1121 775	1121 775	1121 775	1121 775
21-30-6	KNOB	1	580 416	580 416	----	580 416	----
		2, 3, 4	----	1199 416	1199 416	1199 416	1199 416
21-30-22	PIN	2, 3, 4	----	856 842	856 842	856 842	856 842
21-30-36	PIVOT, w/BUSHING	2, 3, 4	----	1142 536	1142 536	1142 536	1142 536
21-30-37	BRACKET, Rod	2, 3, 4	----	867 940	867 940	867 940	867 940
21-30-43	SPRING	1	584 309	584 309	----	584 309	----
21-30-46	PLATE, Ball Friction	1	571 391	571 391	----	571 391	----

★Indicates use as required.

□Indicates parts not listed in any previous parts books.

Series No. (1 indicates B-1 Series) (2 indicates B-2 Series) (3 indicates B-3 Series) (4 indicates B-4 Series)

Where no Series No. is shown part is for B-1, B-2, B-3 and B-4 Series.

December 31, 1952

Prices and specifications subject to change without notice.

Printed in U.S.A.

CODE	3 SPEED TRANSMISSIONS	599 750	1263 859	1268 021	1194 971	1268 031
------	-----------------------	---------	----------	----------	----------	----------

Note: All quantities are one (1) unless otherwise indicated in parenthesis.

GEARSHIFT LEVER - Cont'd

21-30-78	SPRING, Anti-Rattle	2, 3, 4	----	953 144	953 144	953 144	953 144
21-30-109	CAP, Ball	1	317 448	317 448	----	317 448	----
21-30-182	BEARING, Hand Lever	2, 3, 4	----	859 196	859 196	859 196	859 196
21-30-183	SCREW, Bearing	2, 3, 4	----	859 197	859 197	859 197	859 197
	Washer, lock	2, 3, 4	----	121 753	121 753	----	----

GEARSHIFT RAIL

21-34-8	RAIL, Second and Direct	1	1196 833	1196 900	----	1196 900	----
		2, 3, 4	----	1263 467	1263 467	1263 467	1263 467
	Low and Reverse	1	1196 836	1196 836	----	1196 836	----
		2, 3, 4	----	579 221	579 221	579 221	579 221
	Ball (interlock)	-	119 282	119 282	119 282	119 282	119 282
	(selector)	-	104 919	104 919	104 919	104 919	104 919

21-34-10	BRACKET, Second and Third Operating	1	1196 835	1196 835	----	1196 835	----
21-34-47	SPRING, Selector Ball (2)	1	579 195	579 195	----	579 195	----
	(2)	2, 3, 4	----	863 413	863 413	863 413	863 413

21-34-90	RETAINER, Rail Rear	1	579 235	579 235	----	579 235	----
	Rail Rear	2, 3, 4	----	917 549	917 549	917 549	917 549
	Rail Front	1	1196 839	1196 839	----	1196 839	----
	Rail Front	2, 3, 4	----	579 235	579 235	579 235	579 235
	Rivet (4)	-	108 682	108 682	108 682	108 682	108 682
21-34-92	SCREW (retainer to cover) (4)	1	1196 837	1196 837	----	1196 837	----

REMOTE CONTROL GEARSHIFT PARTS

21-42-3	WASHER, Cross Shaft to Trans. Lever Rod (LHD.)	2, 3, 4	----	748 108	748 108	748 108	748 108
21-42-11	LEVER, Gearshift Inner	2, 3, 4	----	E1500 246	E1500 246	E1500 246	E1500 246
21-42-13	SHAFT, Gearshift	2, 3, 4	----	1263 803	1263 803	1263 803	1263 803
21-42-14	SCREW, Gearshift Shaft	2, 3, 4	----	1263 801	1263 801	1263 801	1263 801
	Washer, lock	2, 3, 4	----	120 214	120 214	120 214	120 214

21-42-16	PIN, Stght.	2, 3, 4	----	1391 120	1391 120	1391 120	1391 120
21-42-17	SPRING, Inner Lever Pin Lock	2, 3, 4	----	1268 666	1268 666	1268 666	1268 666
21-42-20	SPRING, Inner Lever Return	2, 3, 4	----	863 413	863 413	863 413	863 413
21-42-24	LEVER, Gearshift Outer	2, 3, 4	----	1263 800	1263 800	1263 800	1263 800
	Nut	2, 3, 4	----	120 369	120 369	120 369	120 369
	Washer, lock	2, 3, 4	----	120 382	120 382	120 382	120 382
	Washer, plain	2, 3, 4	----	120 394	120 394	120 394	120 394

21-42-30	CAM, Selector, w/SHAFT	2, 3, 4	----	1263 798	1263 798	1263 798	1263 798
21-42-32	SNAP RING, Selector Cam Shaft	2, 3, 4	----	1268 668	1268 668	1268 668	1268 668
21-42-37	LEVER, Selector	2, 3, 4	----	1263 802	1270 696	1263 802	1263 802
	Nut	2, 3, 4	----	120 369	120 369	120 369	120 369
	Nut	2, 3, 4	----	442 828	442 828	442 828	442 828
	Washer, lock	2, 3, 4	----	120 382	120 382	120 382	120 382

★ Indicates use as required.

Prices and specifications subject to change without notice.

□ Indicates parts not listed in any previous parts books.

Series No. (1 indicates B-1 Series) (2 indicates B-2 Series) (3 indicates B-3 Series) (4 indicates B-4 Series)

Where no Series No. is shown part is for B-1, B-2, B-3 and B-4 Series.

Printed in U.S.A.

Continued on opposite page. Read across.

CODE	4 SPEED TRANSMISSION	E1393 365	1195 972	1194 252	1268 027
------	--------------------------------	-----------	----------	----------	----------

Note: All quantities are one (1) unless otherwise indicated in parenthesis.

TRANSMISSION CASE

21-03-1	CASE	*1265 988	1194 253	1194 253	1194 253
	Plug (drain)	* 103 869	103 869	103 869	103 869
	(filler)	* 103 875	103 875	103 875	103 875
	(oil level)	-----	-----	-----	-----
	(fork lock screw)	-----	-----	-----	-----
21-03-15	PLUG, Drain	-----	-----	-----	-----
21-03-18	PLUG, Hole	* 566 967	-----	-----	-----
21-03-24	PLUG, Back-Up Light Switch Hole	-----	-----	-----	-----
21-03-25	GASKET, Back-Up Light Switch Hole Plug	-----	-----	-----	-----

CASE EXTENSION

21-04-1	EXTENSION	-----	-----	-----	-----
	Screw or Bolt, 3/8"-16 x 1" (★)	-----	-----	-----	-----
	Screw or Bolt, 3/8"-16 x 1 1/4" (★)	-----	-----	-----	-----
	Washer, lock (8)	-----	-----	-----	-----
21-04-2	GASKET	-----	-----	-----	-----
21-04-11	BEARING	-----	-----	-----	-----
21-04-12	SNAP RING, Bearing (.088 thk.) (★)	-----	-----	-----	-----
	(.091 thk.) (★)	-----	-----	-----	-----
	(.094 thk.) (★)	-----	-----	-----	-----
	(.097 thk.) (★)	-----	-----	-----	-----
21-04-13	PLUG, Speedometer Oil Hole	-----	-----	-----	-----

POWER TAKE-OFF

21-08-1	COVER	* 556 875	556 875	556 875	556 875
	Screw, 3/8"-16 x 3/4"	* 122 119	122 119	122 119	122 119
	Washer, lock	* 120 382	120 382	120 382	120 382
21-08-3	GASKET	* 567 500	567 500	567 500	567 500

MAIN DRIVE GEAR

21-09-2	GEAR	*1272 274	1189 801	1091 489	1194 313
21-09-5	BEARING	*1090 119	1090 119	1090 119	1090 119
21-09-23	SNAP RING, Bearing	*1090 125	*1090 125	*1090 125	*1090 125
	(.088 thk.)	-----	-----	-----	-----
	(.091 thk.)	-----	-----	-----	-----
	(.095 thk.)	-----	-----	-----	-----
	(.097 thk.)	-----	-----	-----	-----
21-09-29	SNAP RING, Gear	-----	556 833	556 833	556 833
	RETAINER	*1390 851	1265 638	1265 638	1263 836
	Bolt or Screw, 5/16"-18 x 3/4" (4)	* 122 007	122 007	122 007	122 007
	Washer, lock (4)	* 138 485	138 485	138 485	138 485
21-09-32	GROMMET, Retainer Screw (4)	-----	-----	-----	-----
21-09-33	GASKET, Retainer	*1090 121	1090 121	1090 121	1090 121
21-09-36	NUT, Bearing Retaining	*1265 637	-----	-----	-----

MAIN SHAFT GEARS

21-10-3	GEAR, First Speed	-----	-----	-----	-----
21-10-5	WASHER, First Speed Gear Thrust (2)	-----	-----	-----	-----

★Indicates use as required. Prices and specifications subject to change without notice.
 ☐Indicates parts not listed in any previous parts books.
 Series No. (1 indicates B-1 Series) (2 indicates B-2 Series) (3 indicates B-3 Series) (4 indicates B-4 Series)
 Where no Series No. is shown part is for B-1, B-2, B-3 and B-4 Series.
 April 13, 1953 Supersedes Dec. 31, 1952. Page 21-18 Printed in U.S.A.
 * Indicates change or addition.

Continued from previous page. Read across.

1272 019	1272 273	1265 987	1272 973	1326 764	1393 364	1270 417	1393 363
1265 988	1265 988	1265 988	1265 988	1400 079	1265 988	1194 253	1265 988
103 869	103 869	103 869	103 869	-----	103 869	103 869	103 869
103 875	103 875	103 875	103 875	103 868	103 875	103 875	103 875
-----	-----	-----	-----	103 868	-----	-----	-----
-----	-----	-----	-----	103 867	-----	-----	-----
-----	-----	-----	-----	1112 666	-----	-----	-----
566 967	566 967	566 967	566 967	-----	566 967	* 566 967	* 566 967
-----	-----	-----	-----	1139 153	-----	-----	-----
-----	-----	-----	-----	1302 807	-----	-----	-----
-----	-----	-----	-----	1317 860	-----	-----	-----
-----	-----	-----	-----	120 233	-----	-----	-----
-----	-----	-----	-----	122 145	-----	-----	-----
-----	-----	-----	-----	120 382	-----	-----	-----
-----	-----	-----	-----	1139 781	-----	-----	-----
-----	-----	-----	-----	694 770	-----	-----	-----
-----	-----	-----	-----	1317 863	-----	-----	-----
-----	-----	-----	-----	1317 864	-----	-----	-----
-----	-----	-----	-----	1317 865	-----	-----	-----
-----	-----	-----	-----	1317 866	-----	-----	-----
-----	-----	-----	-----	865 892	-----	-----	-----
556 875	556 875	556 875	556 875	-----	556 875	556 875	556 875
122 119	122 119	122 119	122 119	-----	122 119	122 119	122 119
120 382	120 382	120 382	120 382	-----	120 382	120 382	120 382
567 500	567 500	567 500	567 500	-----	567 500	567 500	567 500
1270 361	1272 274	1270 990	1270 990	1112 452	1270 361	1189 801	1270 990
1090 119	1090 119	1090 119	1090 119	957 846	1090 119	1090 119	1090 119
*1090 125	*1090 125	*1090 125	*1090 125	-----	*1090 125	*1090 125	*1090 125
-----	-----	-----	-----	1112 493	-----	-----	-----
-----	-----	-----	-----	1112 494	-----	-----	-----
-----	-----	-----	-----	1112 495	-----	-----	-----
-----	-----	-----	-----	1112 496	-----	-----	-----
-----	-----	-----	-----	-----	-----	556 833	-----
1265 638	1390 851	1265 638	1265 638	864 013	1265 638	1265 638	1265 638
122 007	122 007	122 007	122 007	122 007	122 007	122 007	122 007
138 485	138 485	138 485	138 485	-----	138 485	138 485	138 485
-----	-----	-----	-----	670 946	-----	-----	-----
1090 121	1090 121	1090 121	1090 121	864 018	1090 121	1090 121	1090 121
1265 637	1265 637	1265 637	1265 637	-----	1265 637	-----	1265 637
-----	-----	-----	-----	1323 233	-----	-----	-----
-----	-----	-----	-----	1324 596	-----	-----	-----

*Indicates use as required.

Prices and specifications subject to change without notice.

☐Indicates parts not listed in any previous parts books.

Series No. (1 indicates B-1 Series) (2 indicates B-2 Series) (3 indicates B-3 Series) (4 indicates B-4 Series)

Where no Series No. is shown part is for B-1, B-2, B-3 and B-4 Series.

* Indicates change or addition.

Continued on opposite page. Read across.

CODE	4 SPEED TRANSMISSION	E1393 365	1195 972	1194 252	1268 027
------	--------------------------------	-----------	----------	----------	----------

Note: All quantities are one (1) unless otherwise indicated in parenthesis.

MAIN SHAFT GEARS - Cont'd

21-10-6	GEAR, Low and Second	*1265 998	1090 123	1090 123	1090 123
21-10-16	GEAR, Second Speed	*1265 996	-----	-----	-----
21-10-20	WASHER, Second Speed Gear Locating . .	*1265 997	-----	-----	-----
21-10-24	ROLLERS, Second Speed Gear (46)	*1265 658	-----	-----	-----
21-10-31	GEAR, Third Speed	*1270 985	-----	-----	-----
21-10-32	BEARING, Third Speed Gear Thrust . . .	-----	-----	-----	-----
21-10-33	WASHER, Third Speed Gear Bearing (.056 thk.) (★) (.060 thk.) (★) (.072 thk.) (★)	----- ----- -----	----- ----- -----	----- ----- -----	----- ----- -----
21-10-35	BUSHING, Third Speed Gear	*1265 994	-----	-----	-----
	ROLLERS, Third Speed Gear (72)	-----	-----	-----	-----
21-10-36	SPACER, Third Speed Gear Bearing Rollers	----- -----	----- -----	----- -----	----- -----
21-10-37	RING, Third Speed Gear Bearing Roller Spacer	----- -----	----- -----	----- -----	----- -----
21-10-38	PIN, Third Speed Gear Bushing Retainer .	*1265 655	-----	-----	-----
21-10-39	WASHER, Third Speed Gear Locating . .	*1265 995	-----	-----	-----
21-10-78	GEAR, Third and Direct	-----	1091 490	1091 490	1091 490
21-10-81	SNAP RING, Third and Direct Speed Gear (.083 thk.) (★) (.088 thk.) (★) (.093 thk.) (★) (.098 thk.) (★) (.102 thk.) (★)	----- ----- ----- ----- -----	----- ----- ----- ----- -----	----- ----- ----- ----- -----	----- ----- ----- ----- -----
21-10-96	RING, Third Speed Gear Blocker	-----	-----	-----	-----
21-10-97	SPRING, Third Speed Gear Blocker	-----	-----	-----	-----

REVERSE IDLER GEAR

21-11-1	GEAR, w/BUSHING	*1270 363	1090 139	1090 139	1090 139
21-11-2	BUSHING	*1270 365	-----	-----	-----
21-11-11	PLATE, Shaft Lock	*1266 009	-----	-----	-----
	Bolt, 3/8" -16 x 3/4"	* 122 119	-----	-----	-----
	Washer, lock	* 120 382	-----	-----	-----

REVERSE IDLER SHAFT

21-12-1	SHAFT	*1266 008	1090 141	1090 141	1090 141
	Key, Woodruff	-----	-----	-----	-----

CLUTCH GEAR AND SLEEVE

21-14-1	SYNCHRONIZER UNIT	-----	-----	-----	-----
21-14-5	GEAR, Synchronizer	*1270 987	-----	-----	-----
21-14-6	SLEEVE, Synchronizer Sliding	*1270 988	-----	-----	-----
21-14-15	SPRING, Synchronizer Stop Ring, Outer .	-----	-----	-----	-----
21-14-19	RING, Synchronizer Stop, Outer (2) (6 machined slots 1/8" wide on outer edge) Outer (2) (without machined slots)	----- E1501 653	----- -----	----- -----	----- -----
	Outer	-----	-----	-----	-----
	RING, Synchronizer Stop, w/PINS, Inner (2) (use with 1265 645) Inner (2) (use with 1501 653)	----- E1501 652	----- -----	----- -----	----- -----
21-14-20	SNAP RING, Synchronizer (.086 to .088 thk.) (★) (.089 to .091 thk.) (★) (.092 to .094 thk.) (★) (.095 to .097 thk.) (★)	*1265 649 *1265 650 *1265 651 *1265 652	----- ----- ----- -----	----- ----- ----- -----	----- ----- ----- -----

★Indicates use as required.

Prices and specifications subject to change without notice.

E1Indicates parts not listed in any previous parts books.

Series No. (1 indicates B-1 Series) (2 indicates B-2 Series) (3 indicates B-3 Series) (4 indicates B-4 Series)

Where no Series No. is shown part is for B-1, B-2, B-3 and B-4 Series.

April 13, 1953 Supersedes Dec. 31, 1952.

Page 21-20

Printed in U.S.A.

* Indicates change or addition.

Continued from previous page. Read across.

1272 019	1272 273	1265 987	1272 973	1326 764	1393 364	1270 417	1393 363
1265 998	1265 998	1265 998	1265 998	----	1265 998	1090 123	1265 998
1265 996	1265 996	1265 996	1265 996	----	1265 996	----	1265 996
1265 997	1265 997	1265 997	1265 997	----	1265 997	----	1265 997
1265 658	1265 658	1265 658	1265 658	----	1265 658	----	1265 658
1270 985	1270 985	1270 985	1270 985	----	1270 985	----	1270 985
----	----	----	----	1112 728	----	----	----
----	----	----	----	1400 095	----	----	----
----	----	----	----	1112 729	----	----	----
----	----	----	----	1112 730	----	----	----
1265 994	1265 994	1265 994	1265 994	----	1265 994	----	1265 994
----	----	----	----	865 085	----	----	----
----	----	----	----	1323 239	----	----	----
----	----	----	----	863 947	----	----	----
1265 655	1265 655	1265 655	1265 655	----	1265 655	----	1265 655
1265 995	1265 995	1265 995	1265 995	----	1265 995	----	1265 995
----	----	----	----	1400 096	----	1091 490	----
----	----	----	----	1137 350	----	----	----
----	----	----	----	863 948	----	----	----
----	----	----	----	863 949	----	----	----
----	----	----	----	868 994	----	----	----
----	----	----	----	863 950	----	----	----
----	----	----	----	1314 012	----	----	----
----	----	----	----	1112 558	----	----	----
1266 005	1266 005	1266 005	1266 005	1142 113	1270 363	1090 139	1270 363
1266 007	1266 007	1266 007	1266 007	1112 480	1270 365	----	1270 365
1266 009	1266 009	1266 009	1266 009	----	1266 009	----	1266 009
122 119	122 119	122 119	122 119	----	122 119	----	122 119
120 382	120 382	120 382	120 382	----	120 382	----	120 382
1266 008	1266 008	1266 008	1266 008	1112 478	1266 008	1090 141	1266 008
----	----	----	----	124 545	----	----	----
1270 987	1270 987	1270 987	1270 987	1322 773	1270 987	----	1270 987
1270 988	1270 988	1270 988	1270 988	1323 234	1270 988	----	1270 988
----	----	----	----	1323 235	----	----	----
----	----	----	----	1324 599	----	----	----
*1265 645	*1265 645	*1265 645	*1265 645	----	*1265 645	----	*1265 645
⊠1501 653	⊠1501 653	⊠1501 653	⊠1501 653	----	⊠1501 653	----	----
----	----	----	----	1323 240	----	----	----
*1265 642	*1265 642	*1265 642	*1265 642	*1323 243	*1265 642	----	*1265 642
⊠1501 652	⊠1501 652	⊠1501 652	⊠1501 652	----	⊠1501 652	----	----
1265 649	1265 649	1265 649	1265 649	----	1265 649	----	1265 649
1265 650	1265 650	1265 650	1265 650	----	1265 650	----	1265 650
1265 651	1265 651	1265 651	1265 651	----	1265 651	----	1265 651
1265 652	1265 652	1265 652	1265 652	----	1265 652	----	1265 652

*Indicates use as required.

Prices and specifications subject to change without notice.

⊠Indicates parts not listed in any previous parts books.

Series No. (1 indicates B-1 Series) (2 indicates B-2 Series) (3 indicates B-3 Series) (4 indicates B-4 Series)

Where no Series No. is shown part is for B-1, B-2, B-3 and B-4 Series.

* Indicates change or addition.

Continued on opposite page. Read across.

CODE	4 SPEED TRANSMISSION	E1393 365	1195 972	1194 252	1268 027
------	--------------------------------	-----------	----------	----------	----------

Note: All quantities are one (1) unless otherwise indicated in parenthesis.

COUNTERSHAFT GEARS

21-15-2	GEAR	----	1090 132	1090 132	1090 132
21-15-33	WASHER, Thrust	----	1090 137	1090 137	1090 137
	(front) (.093 thk.)	----	----	----	----
	(rear) (.097 thk.)	----	----	----	----
	(.102 thk.)	----	----	----	----
	(.107 thk.)	----	----	----	----
	(.112 thk.)	----	----	----	----
	(.117 thk.)	----	----	----	----
21-15-34	PLATE, Thrust Washer (rear)	----	----	----	----
21-15-38	WASHER, Bearing	----	----	----	----

MAIN SHAFT

21-16-2	SHAFT, w/Low and Second and Third and Direct GEARS	----	1268 395	1268 395	1268 395
21-16-3	SHAFT	*1265 991	1091 851	1091 851	1091 851

MAIN SHAFT PILOT BEARING

21-17-2	BEARING	*1091 903	1091 903	1091 903	1091 903
	ROLLERS (15)	----	----	----	----
21-17-9	SPACER	*1091 904	1091 904	1091 904	1091 904

MAIN SHAFT REAR BEARING

21-19-2	BEARING	* 957 846	957 846	957 846	957 846
21-19-9	SHIM	*1265 992	----	----	----
21-19-15	SNAP RING	----	1090 125	1090 125	1090 125
	(.088 thk.) (★)	----	----	----	----
	(.091 thk.) (★)	----	----	----	----
	(.095 thk.) (★)	----	----	----	----
	(.097 thk.) (★)	----	----	----	----

MAIN SHAFT REAR BEARING OIL SEAL

21-22-2	OIL SEAL	* 593 596	593 596	593 596	593 596
---------	--------------------	-----------	---------	---------	---------

MAIN SHAFT REAR BEARING RETAINER

21-23-2	RETAINER	*1270 418	1194 254	1194 254	1194 254
	Bolt, 5/16"-18 x 1" (2)	* 122 017	122 017	122 017	122 017
	(2)	* 122 065	122 065	122 065	122 065
	(4)	----	----	----	----
	Washer, lock (4)	* 120 214	120 214	120 214	120 214
21-23-4	SNAP RING, Bearing	*1090 130	1090 130	1090 130	1090 130
21-23-17	GASKET	*1090 129	1090 129	1090 129	1090 129

COUNTERSHAFT

21-24-2	COUNTERSHAFT	----	1090 133	1090 133	1090 133
	w/GEARS INTEGRAL	*1270 362	----	----	----
21-24-15	PLATE, Idle and Countershaft Lock	----	556 888	556 888	556 888
	Bolt, 3/8"-16 x 3/4"	----	122 119	122 119	122 119
	Washer, lock	----	120 382	120 382	120 382
21-24-25	SLEEVE, Free Wheeling Cam Control	----	----	----	----
	Key, Woodruff	----	----	----	----

★ Indicates use as required. Prices and specifications subject to change without notice.
 E Indicates parts not listed in any previous parts books.
 Series No. (1 indicates B-1 Series) (2 indicates B-2 Series) (3 indicates B-3 Series) (4 indicates B-4 Series)
 Where no Series No. is shown part is for B-1, B-2, B-3 and B-4 Series.
 April 13, 1953 Supersedes Dec. 31, 1952. Page 21-22 Printed in U.S.A.
 * Indicates change or addition.

Continued from previous page. Read across

1272 019	1272 273	1265 987	1272 973	1326 764	1393 364	1270 417	1393 363
-----	-----	-----	-----	1400 083	-----	1090 132	-----
-----	-----	-----	-----	-----	-----	1090 137	-----
-----	-----	-----	-----	1112 477	-----	-----	-----
-----	-----	-----	-----	1112 483	-----	-----	-----
-----	-----	-----	-----	1112 484	-----	-----	-----
-----	-----	-----	-----	1112 485	-----	-----	-----
-----	-----	-----	-----	1112 482	-----	-----	-----
-----	-----	-----	-----	1142 116	-----	-----	-----
-----	-----	-----	-----	1112 479	-----	-----	-----
-----	-----	-----	-----	1112 475	-----	-----	-----
-----	-----	-----	-----	-----	-----	1268 395	-----
1265 991	1265 991	1265 991	1265 991	1139 749	1265 991	1091 851	1265 991
-----	-----	-----	-----	-----	-----	-----	-----
1091 903	1091 903	1091 903	1091 903	-----	1091 903	1091 903	1091 903
-----	-----	-----	-----	602 007	-----	-----	-----
1091 904	1091 904	1091 904	1091 904	-----	1091 904	1091 904	1091 904
-----	-----	-----	-----	-----	-----	-----	-----
957 846	957 846	957 846	957 846	-----	957 846	957 846	957 846
1265 992	1265 992	1265 992	1265 992	-----	1265 992	-----	1265 992
-----	-----	-----	-----	-----	-----	1090 125	-----
-----	-----	-----	-----	631 823	-----	-----	-----
-----	-----	-----	-----	631 824	-----	-----	-----
-----	-----	-----	-----	631 825	-----	-----	-----
-----	-----	-----	-----	640 332	-----	-----	-----
-----	-----	-----	-----	-----	-----	-----	-----
593 596	593 596	593 596	593 596	670 752	593 596	593 596	593 596
-----	-----	-----	-----	-----	-----	-----	-----
1270 418	1270 418	1194 254	1272 918	1139 746	1270 418	1270 418	1272 918
122 017	122 017	122 017	122 017	-----	122 017	122 017	122 017
122 065	122 065	122 065	122 065	-----	122 065	122 065	122 065
-----	-----	-----	-----	122 027	-----	-----	-----
120 214	120 214	120 214	120 214	120 214	120 214	120 214	120 214
1090 130	1090 130	1090 130	1090 130	-----	-----	1090 130	1090 130
1090 129	1090 129	1090 129	1090 129	-----	1090 129	1090 129	1090 129
-----	-----	-----	-----	-----	-----	-----	-----
-----	-----	-----	-----	1112 476	-----	1090 133	-----
1265 999	1265 999	1265 999	1265 999	-----	1265 999	-----	1270 362
-----	-----	-----	-----	-----	-----	556 888	-----
-----	-----	-----	-----	-----	-----	122 119	-----
-----	-----	-----	-----	-----	-----	120 382	-----
-----	-----	-----	-----	1136 648	-----	-----	-----
-----	-----	-----	-----	124 544	-----	-----	-----

★Indicates use as required.

Prices and specifications subject to change without notice.

⊠Indicates parts not listed in any previous parts books.

Series No. (1 indicates B-1 Series) (2 indicates B-2 Series) (3 indicates B-3 Series) (4 indicates B-4 Series)

Where no Series No. is shown part is for B-1, B-2, B-3 and B-4 Series.

* Indicates change or addition.

Continued on opposite page. Read across.

CODE	4 SPEED TRANSMISSION	E1393 365	1192 972	1194 252	1268 027
------	--------------------------------	-----------	----------	----------	----------

Note: All quantities are one (1) unless otherwise indicated in parenthesis.

COUNTERSHAFT BEARING

21-25-2	BEARING (88)	-----	565 291	565 291	565 291
	(front)	* 619 167	-----	-----	-----
	(rear)	*1265 674	-----	-----	-----
21-25-4	ROLLERS (54)	-----	-----	-----	-----
	SPACER (end) (2)	-----	1090 135	1090 135	1090 135
	(center)	-----	1090 136	1090 136	1090 136

COUNTERSHAFT FRONT BEARING RETAINER

21-26-3	RETAINER	*1266 000	-----	-----	-----
	Bolt, 5/16" -18 x 7/8"	* 120 229	-----	-----	-----
	Washer, lock	* 120 214	-----	-----	-----
21-26-4	GASKET (2)	*1266 001	-----	-----	-----
21-26-8	LOCKWIRE, Washer Screw	* 572 551	-----	-----	-----
21-26-9	WASHER, Bearing Retaining	*1265 670	-----	-----	-----
21-26-11	SCREW, Washer (2)	*1265 671	-----	-----	-----

COUNTERSHAFT REAR BEARING

21-27-2	RETAINER	*1266 002	-----	-----	-----
	Bolt, 5/16" -18 x 7/8" (4)	* 120 229	-----	-----	-----
	Washer, lock (4)	* 120 214	-----	-----	-----
21-27-3	GASKET	*1266 004	-----	-----	-----

COUNTERSHAFT OVER-RUNNING GEAR

21-28-2	GEAR	-----	-----	-----	-----
21-28-8	ROLLERS (45)	-----	-----	-----	-----

GEARSHIFT HOUSING OR COVER

21-29-2	COVER, Case	*1266 011	1194 257	1194 257	1194 257
	Bolt, 3/8" -16 x 1" (3)	* 120 233	120 233	120 233	120 233
	Bolt, 3/8" -16 x 2" (3)	* 122 181	122 181	122 181	122 181
	Washer, lock (6)	* 120 382	120 382	120 382	120 382
21-29-3	HOUSING	-----	-----	-----	-----
	Screw or Bolt, 5/16" -18 x 7/8" (6)	-----	-----	-----	-----
	Washer, lock (5)	-----	-----	-----	-----

21-29-24	SEAL	-----	-----	-----	-----
21-29-25	GASKET	*1266 012	1196 668	1196 668	1196 668
21-29-46	STOP, Reverse Shift	-----	571 392	571 392	571 392
21-29-47	WASHER, Reverse Shift Stop Plunger	-----	313 514	313 514	313 514
21-29-48	SPRING, Reverse Shift Stop Plunger	-----	572 035	572 035	572 035
21-29-51	PLUG, Reverse Shift Stop Plunger	-----	313 503	313 503	313 503

GEARSHIFT LEVER

21-30-1	LEVER, w/Pivot PLATE (Cab-Over-Engine only)	-----	-----	1196 626	-----
21-30-2	LEVER (except Cab-Over-Engine)	*1274 593	1194 325	1194 325	1194 325
	(Cab-Over-Engine)	-----	-----	594 719	-----
21-30-6	KNOB	* 42 971	42 971	42 971	42 971
21-30-16	PIN, Guide	* 571 390	571 390	571 390	571 390

*Indicates use as required.

Prices and specifications subject to change without notice.

[]Indicates parts not listed in any previous parts books.

Series No. (1 indicates B-1 Series) (2 indicates B-2 Series) (3 indicates B-3 Series) (4 indicates B-4 Series)

Where no Series No. is shown part is for B-1, B-2, B-3 and B-4 Series.

April 13, 1953 Supersedes Dec. 31, 1952.

Page 21-24

Printed in U.S.A.

* Indicates change or addition.

Continued from previous page. Read across.

1272 019	1272 273	1265 987	1272 973	1326 764	1393 364	1270 417	1393 363
-----	-----	-----	-----	-----	-----	565 291	-----
619 167	619 167	619 167	619 167	-----	619 167	-----	619 167
1265 674	1265 674	1265 674	1265 674	-----	1265 674	-----	1265 674
-----	-----	-----	-----	666 927	-----	-----	-----
-----	-----	-----	-----	-----	-----	1090 135	-----
-----	-----	-----	-----	1112 474	-----	1090 136	-----
1266 000	1266 000	1266 000	1266 000	-----	1266 000	-----	1266 600
120 229	120 229	120 229	120 229	-----	120 229	-----	120 229
120 214	120 214	120 214	120 214	-----	120 214	-----	120 214
1266 001	1266 001	1266 001	1266 001	-----	1266 001	-----	1266 601
572 551	572 551	572 551	572 551	-----	572 551	-----	572 551
1265 670	1265 670	1265 670	1265 670	-----	1265 670	-----	1265 670
1265 671	1265 671	1265 671	1265 671	-----	1265 671	-----	1265 671
1266 002	1266 002	1266 002	1266 002	-----	1266 002	-----	1266 002
120 229	120 229	120 229	120 229	-----	120 229	-----	120 229
120 214	120 214	120 214	120 214	-----	120 214	-----	120 214
1266 004	1266 004	1266 004	1266 004	-----	1266 004	-----	1266 004
-----	-----	-----	-----	1323 708	-----	-----	-----
-----	-----	-----	-----	865 085	-----	-----	-----
1266 011	1266 011	1266 011	1266 011	-----	1266 011	1194 257	1266 011
120 233	120 233	120 233	120 233	-----	120 233	120 233	120 233
122 181	122 181	122 181	122 181	-----	122 181	122 181	122 181
120 382	120 382	120 382	120 382	-----	120 382	120 382	120 382
-----	-----	-----	-----	1329 532	-----	-----	-----
-----	-----	-----	-----	120 229	-----	-----	-----
-----	-----	-----	-----	120 214	-----	-----	-----
1266 012	1266 012	1266 012	1266 012	1408 466	1266 012	1196 668	1266 012
-----	-----	-----	-----	1112 607	-----	571 392	-----
-----	-----	-----	-----	-----	-----	313 514	-----
-----	-----	-----	-----	-----	-----	572 035	-----
-----	-----	-----	-----	-----	-----	313 503	-----
1266 013	1274 593	1196 626	1266 013	1121 775	1266 013	1194 325	1266 013
-----	-----	1266 013	-----	-----	-----	-----	-----
42 971	42 971	1266 045	42 971	1199 416	42 971	42 971	42 971
571 390	571 390	571 390	571 390	-----	571 390	571 390	571 390

★ Indicates use as required.

☐ Indicates parts not listed in any previous parts books.

Series No. (1 indicates B-1 Series) (2 indicates B-2 Series) (3 indicates B-3 Series) (4 indicates B-4 Series)

Where no Series No. is shown part is for B-1, B-2, B-3 and B-4 Series.

* Indicates change or addition.

Prices and specifications subject to change without notice.

Continued on opposite page. Read across.

CODE	4 SPEED TRANSMISSION	E1393 365	1195 972	1194 252	1268 027
------	--------------------------------	-----------	----------	----------	----------

Note: All quantities are one (1) unless otherwise indicated in parenthesis.

GEARSHIFT LEVER - Cont'd

21-30-22	PIN	-----	-----	-----	-----
21-30-37	BRACKET, Rod	-----	-----	-----	-----
21-30-43	SPRING	*1268 587	1268 587	584 309	584 309
21-30-46	PLATE, Ball Friction	* 571 391	571 391	571 391	571 391
21-30-78	SPRING, Anti-Rattle	-----	-----	-----	-----
21-30-109	CAP, Ball	* 317 448	317 448	317 448	317 448
21-30-149	RETAINER, First Speed Stop Plunger Spring	-----	313 515	313 515	313 515
21-30-150	WASHER, First Speed Stop Plunger "C"	-----	313 514	313 514	313 514
21-30-153	NUT, First Speed Stop Plunger Check	-----	313 516	313 516	313 516
21-30-157	PLUG, Hand Lever Support (Cab-Over-Engine only)	-----	-----	-----	-----
21-30-160	SPRING, Hand Lever Support Plug (Cab-Over-Engine only)	-----	-----	-----	-----
21-30-163	ROD, Control (Cab-Over-Engine only) (B-1-FM and B-1-HM up to serial No. 83509159 Det. and 9267239 S. L. Built, B-1-JM up to serial No. 8738895 Det. and 88500672 S. L. Built) (Cab-Over Engine only)	-----	-----	1196 628	-----
	(B-1-FM and B-1-HM after serial No. 83509159 Det. and 9267239 S. L. Built, B-1-JM after serial No. 8738895 Det. and 88500672 S. L. Built) (Cab-Over-Engine only)	-----	-----	1263 868	-----
	Nut (2)	-----	-----	125 233	-----
	Pin, cotter (2)	-----	-----	103 373	-----
21-30-164	BOLT, Control Rod (Cab-Over-Engine) (2)	-----	-----	594 726	-----

GEARSHIFT RAIL

21-34-8	RAIL, Reverse Shift	*1266 016	1194 259	1194 259	1194 259
	Low and Second Shift	*1266 015	1194 260	1194 260	1194 260
	Third and Direct	*1266 014	1266 226	1266 226	1266 226
	Reverse Shift Fork	*1266 022	1266 022	1266 022	1266 022
	High and Low	-----	-----	-----	-----
	Direct	-----	-----	-----	-----
	Ball (poppet) (3)	* 104 920	104 920	104 920	104 920
	(2)	-----	-----	-----	-----
	Plug (6)	* 103 892	103 892	103 892	103 892
21-34-32	LUG, Reverse Shift	*1266 018	1194 322	1194 322	1194 322
	END, Low and Second Shift	*1194 341	1194 341	1194 341	1194 341
21-34-33	SCREW (lug or end to rail) (2)	* 517 362	517 362	517 362	517 362
21-34-34	LOCKWIRE (lug or end screw) (2)	* 572 551	572 551	572 551	572 551
21-34-41	PLUNGER, Interlock (2)	* 556 882	556 882	556 882	556 882
21-34-42	PIN, Interlock	*1265 694	1265 694	1265 694	1265 694
21-34-44	PLUG, Interlock	* 928 178	928 178	928 178	928 178
21-34-47	SPRING, Poppet (3)	* 517 373	517 373	517 373	517 373
	Selector Ball (2)	-----	-----	-----	-----
21-34-75	GUIDE, Direct Speed Rail	-----	-----	-----	-----
21-34-77	SEAL, Direct Speed Rail Guide	-----	-----	-----	-----
21-34-85	SNAP RING, Direct Speed Rail Guide	-----	-----	-----	-----

★ Indicates use as required.

Prices and specifications subject to change without notice.

Ⓜ Indicates parts not listed in any previous parts books.

Series No. (1 indicates B-1 Series) (2 indicates B-2 Series) (3 indicates B-3 Series) (4 indicates B-4 Series)

Where no Series No. is shown part is for B-1, B-2, B-3 and B-4 Series.

Printed in U.S.A.

April 13, 1953 Supersedes Dec. 31, 1952.

Page 21-26

* Indicates change or addition.

Continued from previous page. Read across.

1272 019	1272 973	1265 987	1272 973	1326 764	1393 364	1270 417	1393 363
-----	-----	-----	-----	856 842	-----	-----	-----
-----	-----	-----	-----	867 940	-----	-----	-----
1268 587	1268 587	584 309	1268 587	-----	1268 587	584 309	1268 587
571 391	571 391	571 391	571 391	-----	571 391	571 391	571 391
-----	-----	-----	-----	953 144	-----	-----	-----
317 448	317 448	317 448	317 448	-----	317 448	317 448	317 448
-----	-----	-----	-----	-----	-----	313 515	-----
-----	-----	-----	-----	-----	-----	-----	-----
-----	-----	-----	-----	-----	-----	313 516	-----
-----	-----	594 727	-----	-----	-----	-----	-----
-----	-----	594 728	-----	-----	-----	-----	-----
-----	-----	-----	-----	-----	-----	-----	-----
-----	-----	-----	-----	-----	-----	-----	-----
-----	-----	1263 868	-----	-----	-----	-----	-----
-----	-----	125 233	-----	-----	-----	-----	-----
-----	-----	103 373	-----	-----	-----	-----	-----
-----	-----	594 726	-----	-----	-----	-----	-----
1266 016	1266 016	1266 016	1266 016	1329 528	1266 016	1194 259	1266 016
1266 015	1266 015	1266 015	1266 015	-----	1266 015	1194 260	1266 015
1266 014	1266 014	1266 014	1266 014	-----	1266 014	1266 226	1266 014
1266 022	1266 022	1266 022	1266 022	-----	1266 022	1266 022	1266 022
-----	-----	-----	-----	1112 576	-----	-----	-----
-----	-----	-----	-----	1327 522	-----	-----	-----
104 920	104 920	104 920	104 920	-----	104 920	104 920	-----
-----	-----	-----	-----	104 921	-----	-----	-----
103 892	103 892	103 892	103 892	-----	103 892	103 892	103 892
1266 018	1266 018	1266 018	1266 018	-----	1266 018	1194 322	1266 018
1194 341	1194 341	1194 341	1194 341	-----	1194 341	1194 341	1194 341
517 362	517 362	517 362	517 362	-----	-----	-----	-----
572 551	572 551	572 551	572 551	-----	572 551	572 551	572 551
556 882	556 882	556 882	556 882	-----	556 882	556 882	556 882
1265 694	1265 694	1265 694	1265 694	-----	1265 694	1265 694	1265 694
928 178	928 178	928 178	928 178	-----	928 178	928 178	928 178
517 373	517 373	517 373	517 373	-----	1409 551	517 373	517 373
-----	-----	-----	-----	1112 614	-----	-----	-----
-----	-----	-----	-----	1315 803	-----	-----	-----
-----	-----	-----	-----	1112 522	-----	-----	-----
-----	-----	-----	-----	1112 524	-----	-----	-----

* Indicates use as required.

□ Indicates parts not listed in any previous parts books.

Series No. (1 indicates B-1 Series) (2 indicates B-2 Series) (3 indicates B-3 Series) (4 indicates B-4 Series)

Where no Series No. is shown part is for B-1, B-2, B-3 and B-4 Series.

* Indicates change or addition.

Prices and specifications subject to change without notice.

Continued on opposite page. Read across.

CODE	4 SPEED TRANSMISSION	E1393 365	1195 972	1194 252	1268 027
------	--------------------------------	-----------	----------	----------	----------

Note: All quantities are one (1) unless otherwise indicated in parenthesis.

GEARSHIFT FORK

21-39-3	FORK, Reverse Shift	*1270 371	588 008	588 008	588 008
	First and Second Shift	*1266 020	1194 261	1194 261	1194 261
	Third and Direct Shift	*1266 019	1194 262	1194 262	1194 262
	Direct Speed	-----	-----	-----	-----
	High and Low	-----	-----	-----	-----

(Cost 88084)

21-39-6	SPRING, Direct Speed Fork Engaging. . .	-----	-----	-----	-----
21-39-20	SCREW (fork to rail) (3)	* 517 362	517 362	517 362	517 362
21-39-23	LOCKWIRE (3)	* 572 551	572 551	572 551	572 551

GEARSHIFT REVERSE LATCH PLUNGER

21-41-2	PLUNGER, Shift Rail Lug (use with 1265 690 snap ring)	*1265 689	-----	-----	-----
	PLUNGER, Shift Rail Lug (use with 313 514 washer)	*1500 335	-----	-----	-----
21-41-3	SPRING, Shift Rail Lug	* 567 499	-----	-----	-----
21-41-5	SNAP RING, Shift Rail Lug Plunger (UP TO - snap ring type)	*1265 690	-----	-----	-----
	SNAP RING, Shift Rail Lug Plunger (AFTER - "C" washer type)	* 313 514	-----	-----	-----

REMOTE CONTROL GEARSHIFT

21-42-11	LEVER	-----	-----	-----	-----
21-42-23	LEVER, Operating	-----	-----	-----	-----
	Nut	-----	-----	-----	-----
	Washer, plain	-----	-----	-----	-----
	Washer, lock	-----	-----	-----	-----
21-42-24	LEVER, Cross Shaft (RHD.) (2)	-----	-----	-----	-----
21-42-31	SEAL, Selector Shaft	-----	-----	-----	-----
21-42-37	LEVER, Selector Outer	-----	-----	-----	-----
	Screw or Bolt, 1/4"-28 x 1" (adjusting)	-----	-----	-----	-----
	Nut	-----	-----	-----	-----
	Washer, lock	-----	-----	-----	-----
21-42-38	SCREW, Selector Outer Lever	-----	-----	-----	-----
21-42-41	YOKE, Selector	-----	-----	-----	-----
21-42-44	LEVER, Selector, w/SHAFT	-----	-----	-----	-----
	Nut	-----	-----	-----	-----
21-42-47	PLATE, Selector Shaft Nut Lock	-----	-----	-----	-----
21-42-53	PLATE	-----	-----	-----	-----
21-42-57	SPRING, Selector Cross Over	-----	-----	-----	-----

COUNTERSHAFT FREE WHEELING CAM ROLLER

21-49-3	ROLLERS (14)	-----	-----	-----	-----
21-49-5	RETAINER	-----	-----	-----	-----
21-49-21	SPRING, Retainer (2)	-----	-----	-----	-----
21-49-25	WASHER, Thrust	-----	-----	-----	-----

★ Indicates use as required.

Prices and specifications subject to change without notice.

E Indicates parts not listed in any previous parts books.

Series No. (1 indicates B-1 Series) (2 indicates B-2 Series) (3 indicates B-3 Series) (4 indicates B-4 Series)

Where no Series No. is shown part is for B-1, B-2, B-3 and B-4 Series.

April 13, 1953 Supersedes Dec. 31, 1952.

* Indicates change or addition.

Continued from previous page. Read across.

1272 019	1272 973	1265 987	1272 973	1326 764	1393 364	1270 417	1393 363
1266 021	1266 021	1266 021	1266 021	----	1270 371	588 008	1270 371
1266 020	1266 020	1266 020 (83054)	1266 020 (83084)	----	1266 020	1194 261	1266 020
1266 019	1266 019	1266 019	1266 019	----	1266 019	1194 262	1266 019
-----	-----	-----	-----	1138 248	-----	-----	-----
-----	-----	-----	-----	1112 752	-----	-----	-----
-----	-----	-----	-----	1327 524	-----	-----	-----
517 362	517 362	517 362	517 362	-----	517 362	517 362	517 362
-----	-----	-----	-----	1112 639	-----	-----	-----
572 551	572 551	572 551	572 551	-----	572 551	572 551	572 551
1265 689	1265 689	1265 689	1265 689	-----	1265 689	-----	1265 689
1500 335	1500 335	1500 335	1500 335	-----	1500 335	-----	-----
567 499	567 499	567 499	567 499	-----	567 499	-----	567 499
1265 690	1265 690	1265 690	1265 690	-----	1265 690	-----	1265 690
313 514	313 514	313 514	313 514	-----	313 514	-----	-----
-----	-----	-----	-----	1112 608	-----	-----	-----
-----	-----	-----	-----	1138 254	-----	-----	-----
-----	-----	-----	-----	120 369	-----	-----	-----
-----	-----	-----	-----	120 394	-----	-----	-----
-----	-----	-----	-----	120 382	-----	-----	-----
-----	-----	-----	-----	1263 800	-----	-----	-----
-----	-----	-----	-----	1127 794	-----	-----	-----
-----	-----	-----	-----	1315 770	-----	-----	-----
-----	-----	-----	-----	123 461	-----	-----	-----
-----	-----	-----	-----	120 367	-----	-----	-----
-----	-----	-----	-----	121 753	-----	-----	-----
-----	-----	-----	-----	679 604	-----	-----	-----
-----	-----	-----	-----	1112 609	-----	-----	-----
-----	-----	-----	-----	1319 457	-----	-----	-----
-----	-----	-----	-----	120 368	-----	-----	-----
-----	-----	-----	-----	1112 668	-----	-----	-----
-----	-----	-----	-----	1112 611	-----	-----	-----
-----	-----	-----	-----	1120 874	-----	-----	-----
-----	-----	-----	-----	670 776	-----	-----	-----
-----	-----	-----	-----	1136 652	-----	-----	-----
-----	-----	-----	-----	1109 182	-----	-----	-----
-----	-----	-----	-----	1117 785	-----	-----	-----

★ Indicates use as required.

□ Indicates parts not listed in any previous parts books.

Series No. (1 indicates B-1 Series) (2 indicates B-2 Series) (3 indicates B-3 Series) (4 indicates B-4 Series)

Where no Series No. is shown part is for B-1, B-2, B-3 and B-4 Series.

* Indicates change or addition.

Prices and specifications subject to change without notice.

Printed in U.S.A.

Continued on opposite page. Read across.

CODE	4 SPEED TRANSMISSION	1195 972	1194 252	1268 027
------	--------------------------------	----------	----------	----------

Note: All quantities are one (1) unless otherwise indicated in parenthesis.

KICKDOWN GOVERNOR

21-75-1	GOVERNOR.	-----	-----	-----
	Nut (terminal).	-----	-----	-----
	Washer, lock	-----	-----	-----
21-75-6	GASKET, Mounting	-----	-----	-----
21-75-7	COVER, Governor	-----	-----	-----

21-75-8	GASKET, Governor Cover	-----	-----	-----
21-75-10	PINION, Governor	-----	-----	-----
21-75-11	WASHER, Governor Pinion	-----	-----	-----
	WASHER, Governor Pinion Thrust.	-----	-----	-----
21-75-14	SNAP RING, Governor Pinion Washer	-----	-----	-----

KICKDOWN SOLENOID

21-79-3	SOLENOID	-----	-----	-----
	Nut (terminal) (2)	-----	-----	-----
21-79-4	GASKET	-----	-----	-----
21-79-9	WASHER, Terminal Lock.	-----	-----	-----

WIRING

21-82-20	BREAKER, Circuit, w/RESISTOR	-----	-----	-----
	Screw or Bolt, 1/4"-20 x 5/8" (mounting) (2)	-----	-----	-----
	Nut (terminal) (4)	-----	-----	-----
	Washer, lock (terminal) (4)	-----	-----	-----

MAIN CONTROL VALVE

21-83-4	SPRING.	-----	-----	-----
21-83-6	SPRING, Ball	-----	-----	-----
	Ball	-----	-----	-----
	Pin, stght.	-----	-----	-----
21-83-14	WASHER	-----	-----	-----

Continued on opposite page. Read across

CODE	5 SPEED TRANSMISSION	1194 689	1263 065	1263 076	1265 634	1272 974	1266 729
------	--------------------------------	----------	----------	----------	----------	----------	----------

Note: All quantities are one (1) unless otherwise indicated in parenthesis.

TRANSMISSION CASE

21-03-1	CASE	1188 373	1194 013	1194 013	1265 635	1265 635	1265 635
	Plug (drain).	103 869	103 869	103 869	103 869	103 869	103 869
	Plug (filler).	103 870	103 870	103 870	103 870	103 870	103 870
21-03-15	PLUG (drain).	-----	-----	-----	-----	-----	-----

★Indicates use as required.

Prices and specifications subject to change without notice.

ⓁIndicates parts not listed in any previous parts books.

Series No. (1 indicates B-1 Series) (2 indicates B-2 Series) (3 indicates B-3 Series) (4 indicates B-4 Series)

Where no Series No. is shown part is for B-1, B-2, B-3 and B-4 Series.

Printed in U.S.A.

Continued from previous page. Read across.

1272 019	1272 273	1265 987	1272 973	⊠1326 764	⊠1393 364	1270 417	⊠1393 363
----------	----------	----------	----------	-----------	-----------	----------	-----------

-----	-----	-----	-----	⊠1370 204	-----	-----	-----
-----	-----	-----	-----	120 614	-----	-----	-----
-----	-----	-----	-----	138 479	-----	-----	-----
-----	-----	-----	-----	1113 117	-----	-----	-----
-----	-----	-----	-----	1297 999	-----	-----	-----

-----	-----	-----	-----	1126 640	-----	-----	-----
-----	-----	-----	-----	1074 064	-----	-----	-----
-----	-----	-----	-----	1061 431	-----	-----	-----
-----	-----	-----	-----	1123 869	-----	-----	-----
-----	-----	-----	-----	1061 432	-----	-----	-----

-----	-----	-----	-----	1126 633	-----	-----	-----
-----	-----	-----	-----	120 614	-----	-----	-----
-----	-----	-----	-----	1113 117	-----	-----	-----
-----	-----	-----	-----	1092 826	-----	-----	-----

-----	-----	-----	-----	⊠1383 657	-----	-----	-----
-----	-----	-----	-----	120 854	-----	-----	-----
-----	-----	-----	-----	120 614	-----	-----	-----
-----	-----	-----	-----	138 479	-----	-----	-----

-----	-----	-----	-----	1137 413	-----	-----	-----
-----	-----	-----	-----	⊠1317 849	-----	-----	-----
-----	-----	-----	-----	104 924	-----	-----	-----
-----	-----	-----	-----	142 509	-----	-----	-----
-----	-----	-----	-----	1137 412	-----	-----	-----

Continued from previous page. Read across.

1274 648	1190 677	⊠1501 891	1263 109	⊠1502 900	1263 311	1267 195	⊠1393 689	1270 651	CODE
----------	----------	-----------	----------	-----------	----------	----------	-----------	----------	------

1265 635	917 430	1194 013	1194 015	1194 013	1194 015	1269 652	1269 652	1269 652	21-03-1
103 869	103 869	103 869	103 869	103 869	103 869	106 642	106 642	106 642	
103 870	103 870	103 870	103 870	103 870	103 870	-----	-----	-----	
-----	-----	-----	-----	-----	-----	1269 653	1269 653	1269 653	21-03-15

★Indicates use as required.

⊠Indicates parts not listed in any previous parts books.

Series No. (1 indicates B-1 Series) (2 indicates B-2 Series) (3 indicates B-3 Series) (4 indicates B-4 Series)

Where no Series No. is shown part is for B-1, B-2, B-3 and B-4 Series.

Prices and specifications subject to change without notice.

Continued on opposite page. Read across.

CODE	5 SPEED TRANSMISSIONS - Cont'd	1194 689	1263 065	1263 076	1265 634	1272 974	1266 729
------	--------------------------------	----------	----------	----------	----------	----------	----------

Note: All quantities are one (1) unless otherwise indicated in parenthesis.

POWER TAKE-OFF

21-08-1	COVER, Opening (★)	556 875	556 875	556 875	556 875	556 875	556 875
	Bolt or Screw, 3/8"-16 x 3/4" (★)	122 119	122 119	122 119	122 119	122 119	122 119
	Washer, lock (★)	120 382	120 382	120 382	120 382	120 382	120 382
21-08-3	GASKET (★)	567 500	567 500	567 500	567 500	567 500	567 500

MAIN DRIVE GEAR AND BEARING AND RETAINER

21-09-2	GEAR	567 417	567 417	920 456	1270 989	1270 989	1266 834
21-09-5	BEARING	567 707	567 707	567 707	1090 119	1090 119	1090 119
21-09-29	RETAINER	567 713	567 713	567 713	1265 638	1265 638	1265 638
	Bolt or Screw, 5/16" - 18 x 1" (2)	122 017	122 017	122 017	122 017	122 017	122 017
	Bolt or Screw, 5/16" - 18 x 3/4" (2)	122 007	122 007	122 007	122 007	122 007	122 007
	Bolt or Screw, 3/8"-16 x 1" (4)	-----	-----	-----	-----	-----	-----
	Washer, lock (4)	138 485	138 485	138 485	138 485	138 485	138 485
21-09-33	GASKET, Retainer	565 303	565 303	565 303	1090 121	1090 121	1090 121
21-09-36	NUT, Bearing Lock	567 488	567 488	567 488	1265 637	1265 637	1265 637

MAIN SHAFT GEARS

21-10-4	GEAR, Low and Reverse Sliding	567 426	567 426	567 426	1265 661	1265 661	1265 661
21-10-8	GEAR, Second and Third Sliding	1263 686	1263 686	1263 686	1265 660	1265 660	1265 660
21-10-16	GEAR, Second Speed, Assembly	-----	-----	-----	-----	-----	-----
21-10-17	GEAR, Fourth and High Sliding	567 429	567 429	-----	-----	-----	-----
21-10-20	WASHER, Second Speed Retaining	-----	-----	-----	-----	-----	-----
21-10-23	RING, Second Speed Gear Retaining	-----	-----	-----	-----	-----	-----
21-10-31	GEAR, Third Speed	567 403	567 403	1189 259	1265 657	1265 657	1266 833
21-10-35	ROLLERS, Third Speed Gear (35) (50)	567 490	567 490	567 490	-----	-----	-----
		-----	-----	-----	1265 658	1265 658	1265 658
21-10-39	WASHER, Third Speed Gear Locating (.119 - .121)	Ⓔ1501 346	Ⓔ1501 346	Ⓔ1501 346	1265 659	1265 659	1265 659
	WASHER, Third Speed Gear Locating (.123 - .125)	Ⓔ1501 347	Ⓔ1501 347	Ⓔ1501 347	-----	-----	-----
21-10-43	GEAR, Fourth Speed	567 405	567 405	-----	1270 986	1270 986	-----
21-10-48	ROLLER, Fourth Speed Gear (21-11-2) (37)	565 291	565 291	-----	-----	-----	-----
21-10-52	BUSHING, Fourth Speed Gear (1.015"-1.018" wide) (★)	567 400	567 400	-----	1265 654	1265 654	-----
	(1.012"-1.015" wide) (★)	Ⓔ1501 217	Ⓔ1501 217	-----	-----	-----	-----
21-10-58	RING, Fourth Speed Gear Retaining	567 491	567 491	-----	-----	-----	-----

★ Indicates use as required.

Ⓔ Indicates parts not listed in any previous parts books.

Series No. (1 indicates B-1 Series) (2 indicates B-2 Series) (3 indicates B-3 Series) (4 indicates B-4 Series)

Where no Series No. is shown part is for B-1, B-2, B-3 and B-4 Series.

December 31, 1952

Page 21-32

Prices and specifications subject to change without notice.

Printed in U.S.A.

Continued from previous page. Read across.

1274 648	1190 677	⊠1501 891	1263 109	⊠1502 900	1263 311	1267 195	⊠1393 689	1270 651	CODE
556 875	556 875	566 875	556 875	566 875	556 875	556 875	556 875	556 875	21-08-1
122 119	122 119	122 119	122 119	122 119	122 119	122 119	122 119	122 119	
120 382	120 382	120 382	120 382	120 382	120 382	120 382	120 382	120 382	
567 500	567 500	567 500	567 500	567 500	567 500	567 500	567 500	567 500	21-08-3
1266 834	1190 679	567 417	1190 679	920 456	1194 014	1269 654	1271 055	1271 055	21-09-2
1090 119	567 707	567 707	567 707	567 707	567 707	⊠1390 282	⊠1390 282	⊠1390 282	21-09-5
1265 638	1190 680	567 713	1190 680	1190 680	1190 680	1269 656	1269 656	1269 656	21-09-29
122 017	122 017	120 229	122 017	120 229	122 017	-----	-----	-----	
122 007	122 007	122 017	122 007	122 017	122 007	-----	-----	-----	
138 485	138 485	138 485	138 485	138 485	138 485	120 233	120 233	120 233	
						120 382	120 382	120 382	
1090 121	565 303	565 303	565 303	565 303	565 303	1269 658	1269 658	1269 658	21-09-33
1265 637	567 488	567 488	567 488	567 488	567 488	1269 657	1269 657	1269 657	21-09-36
1265 661	567 426	567 426	567 426	567 426	567 426	1269 674	1269 674	1269 674	21-10-4
1265 660	1263 686	1263 686	1263 686	1263 686	1263 686	1269 676	1269 676	1269 676	21-10-8
-----	-----	-----	-----	-----	-----	1269 669	1269 669	1269 669	21-10-16
-----	567 429	567 429	567 429	-----	-----	1269 675	-----	-----	21-10-17
-----	-----	-----	-----	-----	-----	1269 672	1269 672	1269 672	21-10-20
1266 833	567 403	567 403	567 403	1189 259	1189 259	1269 673	1269 673	1269 673	21-10-23
-----	567 490	567 490	567 490	567 490	567 490	1269 668	1271 061	1271 061	21-10-31
1265 658	-----	-----	-----	-----	-----	-----	-----	-----	21-10-35
1265 659	⊠1501 346	⊠1501 346	⊠1501 346	⊠1501 346	⊠1501 346	-----	-----	-----	21-10-39
-----	⊠1501 347	⊠1501 347	⊠1501 347	⊠1501 347	⊠1501 347	-----	-----	-----	
-----	567 405	567 405	567 405	-----	-----	1269 660	-----	-----	21-10-43
-----	565 291	565 291	565 291	-----	-----	-----	-----	-----	21-10-48
-----	567 400	567 400	567 400	-----	-----	1269 661	1269 661	1269 661	21-10-52
-----	⊠1501 217	⊠1501 217	⊠1501 217	-----	-----	-----	-----	-----	
-----	567 491	567 491	567 491	-----	-----	1269 662	1269 662	1269 662	21-10-58

★Indicates use as required.

Prices and specifications subject to change without notice.

⊠Indicates parts not listed in any previous parts books.

Series No. (1 indicates B-1 Series) (2 indicates B-2 Series) (3 indicates B-3 Series) (4 indicates B-4 Series)

Where no Series No. is shown part is for B-1, B-2, B-3 and B-4 Series.

Printed in U.S.A.

Continued on opposite page. Read across.

CODE	5 SPEED TRANSMISSIONS - Cont'd	1194 689	1263 065	1263 076	1265 634	1272 974	1266 729
------	--------------------------------	----------	----------	----------	----------	----------	----------

Note: All quantities are one (1) unless otherwise indicated in parenthesis.

MAIN SHAFT GEARS - Cont'd

21-10-62	WASHER, Fourth Speed Gear						
	Locating (front) (.118 - .120)	1501 340	1501 340	-----	-----	-----	-----
	(front) (.121 - .123)	1501 341	1501 341	-----	-----	-----	-----
	(front) (.124 - .126)	1501 342	1501 342	-----	-----	-----	-----
	(front) (.127 - .129)	1501 343	1501 343	-----	-----	-----	-----
	(front) (.130 - .132)	1501 344	1501 344	-----	-----	-----	-----
	(rear)	1501 345	1501 345	-----	-----	-----	-----
		-----	-----	-----	1265 656	1265 656	-----
21-10-63	WASHER, Fourth Speed Gear						
	Bearing Retaining	-----	-----	-----	-----	-----	-----
	Retainer (★)	-----	-----	-----	-----	-----	-----
	(1.012"-1.015" wide) (★)	1501 217	1501 217	-----	-----	-----	-----
	WASHER, Fourth Speed Gear						
	Bearing Retaining (★)	-----	-----	-----	-----	-----	-----
21-10-64	PIN, Fourth Speed Gear						
	Bushing Retaining	567 489	567 489	-----	1265 655	1265 655	-----
21-10-69	SHIM, Fourth Speed Gear (.003) (★)	570 859	570 859	-----	-----	-----	-----
	SHIM, Fourth Speed Gear (.005) (★)	570 860	570 860	-----	-----	-----	-----

REVERSE IDLER

21-11-1	GEAR	567 428	1193 903	1193 903	1265 677	1265 677	1265 677
21-11-2	BEARING, Gear Shaft (21-17-2) (2)	567 656	567 656	567 656	-----	-----	-----
	ROLLERS, Gear Shaft (21-25-2) (62)	-----	-----	-----	580 203	580 203	580 203
21-11-7	SPACER, Gear Shaft Bearing						
	Center	567 494	1194 019	1194 019	1265 679	1265 679	1265 679
21-11-9	SPACER, Gear Shaft Bearing						
	End, (2)	-----	-----	-----	1265 680	1265 680	1265 680
21-11-11	LOCK, Gear Shaft	553 798	553 798	553 798	553 798	553 798	553 798
	Bolt or Screw, 3/8"-16 x 5/8"	122 104	122 104	122 104	122 104	122 104	122 104
	Washer, lock	120 382	120 382	120 382	120 382	120 382	120 382

REVERSE IDLER SHAFT

21-12-1	SHAFT	567 421	1194 018	1194 018	1265 678	1265 678	1265 678
---------	-------	---------	----------	----------	----------	----------	----------

CLUTCH GEAR AND SLEEVE

21-14-5	GEAR, Synchronizer	-----	-----	-----	1270 987	1270 987	1270 987
21-14-6	SLEEVE, Synchronizer Sliding	-----	-----	-----	1270 988	1270 988	1270 988
21-14-19	RING, Synchronizer Stop (outer) (2)	-----	-----	-----	1265 645	1265 645	1265 645
	Synchronizer Stop (outer) (6 machined slots 1/8" wide on outer edge) (UP TO type) (2)	-----	-----	-----	*1265 645	*1265 645	*1265 645
	Synchronizer Stop (outer) (without machined slots) (after type) (2)	-----	-----	-----	E1501 653	E1501 653	E1501 653
	Synchronizer Stop, w/PINS (inner) (2)	-----	-----	-----	*1265 642	*1265 642	*1265 642
	Synchronizer Stop, w/PINS (inner) (use with 1265 645 outer ring) (2)	-----	-----	-----	*1265 642	*1265 642	*1265 642
	Synchronizer Stop, w/PINS (inner) (use with 1501 653 outer ring) (2)	-----	-----	-----	E1501 652	E1501 652	E1501 652
21-14-20	SNAP RING, Synchronizer (.092 - .094) (★)	-----	-----	-----	1265 651	1265 651	1265 651
	Synchronizer (.095 - .097) (★)	-----	-----	-----	*1265 652	*1265 652	*1265 652

★ Indicates use as required.

Prices and specifications subject to change without notice.

E Indicates parts not listed in any previous parts books.

Series No. (1 indicates B-1 Series) (2 indicates B-2 Series) (3 indicates B-3 Series) (4 indicates B-4 Series)

Where no Series No. is shown part is for B-1, B-2, B-3 and B-4 Series.

Printed in U.S.A.

April 13, 1953 Supersedes Dec. 31, 1952.

Page 21-34

* Indicates change or addition.

Continued from previous page. Read across.

1274 648	1190 677	1501 891	1263 109	1502 900	1263 311	1267 195	1393 689	1270 651	CODE
-----	1501 340	1501 340	1501 340	-----	-----	-----	-----	-----	21-10-62
-----	1501 341	1501 341	1501 341	-----	-----	-----	-----	-----	
-----	1501 342	1501 342	1501 342	-----	-----	-----	-----	-----	
-----	1501 343	1501 343	1501 343	-----	-----	-----	-----	-----	
-----	1501 344	1501 344	1501 344	-----	-----	-----	-----	-----	
-----	1501 345	1501 345	1501 345	-----	-----	-----	-----	-----	
-----	-----	-----	-----	-----	-----	1269 666	-----	1269 666	
-----	-----	-----	-----	-----	-----	1269 663	-----	-----	21-10-63
-----	-----	-----	-----	-----	-----	1269 664	-----	-----	
-----	1501 217	1501 217	1501 217	-----	-----	-----	-----	-----	
-----	-----	-----	-----	-----	-----	1269 665	-----	-----	
-----	567 489	567 489	567 489	-----	-----	1269 667	1269 667	1269 667	21-10-64
-----	570 859	-----	570 859	-----	-----	-----	-----	-----	21-10-69
-----	570 860	-----	570 860	-----	-----	-----	-----	-----	
1265 677	567 428	1193 903	1193 903	1193 903	1193 903	1269 694	1269 694	1269 694	21-11-1
-----	567 656	567 656	567 656	567 656	567 656	1269 682	1269 682	1269 682	21-11-2
580 203	-----	-----	-----	-----	-----	-----	-----	-----	
1265 679	567 494	1194 019	1194 019	1194 019	1194 019	1269 696	1269 696	1269 696	21-11-7
1265 680	-----	-----	-----	-----	-----	-----	-----	-----	21-11-9
553 798	553 798	553 798	553 798	553 798	553 798	553 798	553 798	553 798	21-11-11
122 104	122 104	122 104	122 104	122 104	122 104	122 104	122 104	122 104	
120 382	120 382	120 382	120 382	120 382	120 382	120 382	120 382	120 382	
1265 678	567 421	1194 018	*1194 018	1194 018	*1194 018	1269 695	1269 695	1269 695	21-12-1
1270 987	-----	-----	-----	-----	-----	-----	-----	-----	21-14-5
1270 988	-----	-----	-----	-----	-----	-----	-----	-----	21-14-6
1265 645	-----	-----	-----	-----	-----	-----	-----	-----	21-14-19
*1265 645	-----	-----	-----	-----	-----	-----	-----	-----	
Ⓔ1501 653	-----	-----	-----	-----	-----	-----	-----	-----	
*1265 642	-----	-----	-----	-----	-----	-----	-----	-----	
*1265 642	-----	-----	-----	-----	-----	-----	-----	-----	
Ⓔ1501 652	-----	-----	-----	-----	-----	-----	-----	-----	
1265 651	-----	-----	-----	-----	-----	-----	-----	-----	21-14-20
*1265 652	-----	-----	-----	-----	-----	-----	-----	-----	

★ Indicates use as required.

Prices and specifications subject to change without notice.

Ⓔ Indicates parts not listed in any previous parts books.

Series No. (1 indicates B-1 Series) (2 indicates B-2 Series) (3 indicates B-3 Series) (4 indicates B-4 Series)

Where no Series No. is shown part is for B-1, B-2, B-3 and B-4 Series.

* Indicates change or addition.

Continued on opposite page. Read across.

CODE	5 SPEED TRANSMISSIONS - Cont'd	1194 689	1263 065	1263 076	1265 634	1272 974	1266 729
------	--------------------------------	----------	----------	----------	----------	----------	----------

Note: All quantities are one (1) unless otherwise indicated in parenthesis.

COUNTERSHAFT GEARS

21-15-2	GEARS, Cluster	----	----	----	1265 664	1265 664	1265 251
21-15-3	GEARS, Drive	567 419	567 419	920 466	----	----	----
21-15-4	RING, Drive Gear Retaining	567 502	567 502	567 502	----	----	----
21-15-19	GEAR, Second and Reverse	567 420	----	----	----	----	----
21-15-22	GEAR, Third Speed	567 423	567 423	1189 260	----	----	----
21-15-23	GEAR, Fourth Speed	567 422	567 422	----	----	----	----

21-15-26	GEAR, Power Take-Off	----	----	----	----	----	----
21-15-30	SPACER, Cluster Gear	----	----	----	1265 666	1265 666	1265 666
	SPACER, Second and Third Speed Gears	567 493	----	----	----	----	----
21-15-31	KEY, Cluster Gear	----	----	----	1265 667	1265 667	1265 667
21-15-33	WASHER, Cluster Gear Thrust	----	----	----	1265 665	1265 665	1265 665

MAIN SHAFT

21-16-3	SHAFT	567 399	567 399	567 399	1265 640	1265 640	1265 640
---------	-----------------	---------	---------	---------	----------	----------	----------

MAIN SHAFT PILOT BEARING

21-17-2	BEARING (21-11-2)	567 656	567 656	567 656	1091 903	1091 903	1091 903
21-17-9	SPACER	----	----	----	1091 904	1091 904	1091 904

MAIN SHAFT REAR BEARING

21-19-2	BEARING	566 493	566 493	566 493	566 493	566 493	566 493
21-19-9	SHIM (2)	----	----	----	1265 704	1265 704	1265 704

MAIN SHAFT REAR BEARING OIL SEAL

21-22-2	OIL SEAL	567 878	567 878	567 878	567 878	567 878	567 878
---------	--------------------	---------	---------	---------	---------	---------	---------

MAIN SHAFT REAR BEARING RETAINER

21-23-2	RETAINER	1196 650	1196 650	1196 650	1196 650	1272 927	1196 650
	Bolt, 3/8"-16 x 2 1/2"	122 194	122 194	122 194	122 194	122 194	122 194
	Bolt, 3/8"-16 x 1" (4)	120 233	120 233	120 233	120 233	120 233	120 233
	Washer, lock	120 382	120 382	120 382	120 382	120 382	120 382
21-23-9	WASHER, Attaching Bolt (3-03-41)	1116 246	1116 246	1116 246	1116 246	1116 246	1116 246
21-23-17	GASKET	567 402	567 402	567 402	567 402	567 402	567 402

COUNTERSHAFT

21-24-1	COUNTERSHAFT, Assembly	585 277	1194 016	----	1265 662	1265 662	1266 832
21-24-2	COUNTERSHAFT	585 278	1194 017	1194 017	1265 663	1265 663	1265 663
	Key, Woodruff (★)	113 879	113 879	113 879	----	----	----

COUNTERSHAFT BEARING

21-25-2	BEARING (front)	121 856	121 856	121 856	619 167	619 167	619 167
	BEARING (rear)	567 708	567 708	567 708	1265 674	1265 674	1265 674
21-25-4	SPACER (rear)	585 281	585 281	585 281	----	----	----

★Indicates use as required.

Prices and specifications subject to change without notice.

□Indicates parts not listed in any previous parts books.

Series No. (1 indicates B-1 Series) (2 indicates B-2 Series) (3 indicates B-3 Series) (4 indicates B-4 Series)

Where no Series No. is shown part is for B-1, B-2, B-3 and B-4 Series.

Printed in U.S.A.

Continued from previous page. Read across.

1274 648	1190 677	1501 891	1263 109	1502 900	1263 311	1267 195	1393 689	1270 651	CODE
1265 251	-----	-----	-----	-----	-----	-----	-----	-----	21-15-2
-----	567 419	567 419	567 419	920 466	920 466	1269 684	1271 062	1271 062	21-15-3
-----	567 502	567 502	567 502	567 502	567 502	1269 685	1269 685	1269 685	21-15-4
-----	567 420	-----	-----	-----	-----	-----	-----	-----	21-15-19
-----	567 423	567 423	567 423	1189 260	1189 260	1269 687	1271 064	1271 064	21-15-22
-----	567 422	567 422	567 422	-----	-----	1269 686	-----	-----	21-15-23
-----	-----	-----	-----	-----	-----	1269 688	1269 688	1269 688	21-15-26
1265 666	-----	-----	-----	-----	-----	-----	-----	-----	21-15-30
-----	567 493	-----	-----	-----	-----	-----	-----	-----	-----
1265 667	-----	-----	-----	-----	-----	-----	-----	-----	21-15-31
1265 665	-----	-----	-----	-----	-----	-----	-----	-----	21-15-33
1265 640	567 399	567 399	567 399	567 399	567 399	1269 659	1269 659	1269 659	21-16-3
1091 903	567 656	567 656	567 656	567 656	567 656	1269 682	1269 682	1269 682	21-17-2
1091 904	-----	-----	-----	-----	-----	-----	-----	-----	21-17-9
566 493	566 493	566 493	566 493	566 493	566 493	1269 677	1269 677	1269 677	21-19-2
1265 704	-----	-----	-----	-----	-----	-----	-----	-----	21-19-9
567 878	567 878	567 878	567 878	567 878	567 878	1269 681	1269 681	1269 681	21-22-2
1272 927	572 245	1272 927	572 245	1272 927	572 245	1269 678	1269 678	1269 678	21-23-2
122 194	-----	-----	-----	-----	-----	-----	-----	-----	-----
120 233	120 233	120 233	120 233	120 233	120 233	120 233	120 233	120 233	-----
120 382	120 382	120 382	120 382	120 382	120 382	120 382	120 382	120 382	-----
1116 246	-----	-----	-----	-----	-----	-----	-----	-----	21-23-9
567 402	572 247	567 402	572 247	567 402	572 247	1269 680	1269 680	1269 680	21-23-17
1266 832	585 277	1194 016	1194 016	1194 016	-----	-----	-----	-----	21-24-1
1265 663	585 278	1194 017	1194 017	1194 017	1194 017	1269 683	1269 683	1269 683	21-24-2
-----	113 879	-----	113 879	-----	113 879	117 992	117 992	117 992	-----
619 167	121 856	121 856	121 856	121 856	121 856	1269 689	1269 689	1269 689	21-25-2
1265 674	567 708	567 708	567 708	567 708	567 708	567 708	567 708	567 708	-----
-----	585 281	585 281	585 281	585 281	585 281	-----	-----	-----	21-25-4

★Indicates use as required.

Prices and specifications subject to change without notice.

□Indicates parts not listed in any previous parts books.

Series No. (1 indicates B-1 Series) (2 indicates B-2 Series) (3 indicates B-3 Series) (4 indicates B-4 Series)

Where no Series No. is shown part is for B-1, B-2, B-3 and B-4 Series.

Continued on opposite page. Read across.

CODE	5 SPEED TRANSMISSIONS - Cont'd	1194 689	1263 065	1263 076	1265 634	1272 974	1266 729
------	--------------------------------	----------	----------	----------	----------	----------	----------

Note: All quantities are one (1) unless otherwise indicated in parenthesis.

COUNTERSHAFT FRONT BEARING

21-26-3	RETAINER	-----	-----	-----	1265 668	1265 668	1265 668
	Bolt, 5/16"-18 x 3/4" (4)	-----	-----	-----	122 007	122 007	122 007
	Washer, lock (4)	-----	-----	-----	120 214	120 214	120 214
21-26-4	GASKET, Retainer (2)	-----	-----	-----	1265 669	1265 669	1265 669
21-26-6	RING, Bearing Retaining	565 317	565 317	565 317	-----	-----	-----
21-26-7	PLUG, Bearing Retaining	565 318	565 318	565 318	-----	-----	-----
21-26-8	LOCKWIRE, Retaining Washer Screw (5-19-21) (2)	-----	-----	-----	572 551	572 551	572 551
21-26-9	WASHER, Retaining	-----	-----	-----	1265 670	1265 670	1265 670
21-26-10	WASHER, Spacer	567 416	567 416	567 416	-----	-----	-----
21-26-11	SCREW, Retaining Washer (2)	-----	-----	-----	1265 671	1265 671	1265 671

COUNTERSHAFT REAR BEARING

21-27-2	RETAINER or CAP	585 279	585 279	585 279	1265 673	1265 673	1265 673
	Bolt or Screw, 3/8"-16 x 1" (4)	120 233	120 233	120 233	122 007	122 007	122 007
	Washer, lock (4)	120 382	120 382	120 382	120 214	120 214	120 214
21-27-3	GASKET, Retainer or Cap	585 280	585 280	585 280	1265 675	1265 675	1265 675
21-27-12	WASHER, Retaining	585 282	585 282	585 282	-----	-----	-----
	Bolt, 3/8"-24 x 1" (2)	120 647	120 647	120 647	-----	-----	-----
21-27-20	SNAP RING	567 757	567 757	567 757	-----	-----	-----
21-27-21	NUT, Retainer	-----	-----	-----	-----	-----	-----

GEARSHIFT COVER

21-29-2	COVER	1196 652	1196 652	1196 652	1265 682	1265 682	1265 682
	Bolt or Screw, 3/8"-16 x 1" (★)	120 233	120 233	120 233	120 233	120 233	120 233
	Washer, lock (★)	120 382	120 382	120 382	120 382	120 382	120 382
21-29-8	TOWER	-----	-----	-----	-----	-----	-----
	Bolt or Screw, 3/8"-16 x 1"	-----	-----	-----	-----	-----	-----
	Washer, lock	-----	-----	-----	-----	-----	-----
21-29-9	GASKET, Tower	-----	-----	-----	-----	-----	-----
21-29-25	GASKET, Cover	567 486	567 486	567 486	1265 683	1265 683	1265 683
21-29-33	SCREW, Attaching (6-09-6)	579 719	579 719	579 719	-----	-----	-----

GEARSHIFT LEVER

21-30-1	LEVER, Hand, w/Pivot PLATE (Cab-Over-Engine only)	1196 626	1196 626	1196 626	1196 626	1196 626	1196 626
21-30-2	LEVER (except Cab-Over-Engine) LEVER (Cab-Over-Engine only)	1195 842	1195 842	1195 842	1267 555	1267 555	1267 555
21-30-6	KNOB	42 971	42 971	42 971	42 971	42 971	42 971
21-30-16	PIN, Guide	571 390	571 390	571 390	571 390	571 390	571 390
21-30-43	SPRING	569 991	569 991	569 991	1268 587	1268 587	569 991
21-30-46	SEAT, Spring	567 497	567 497	567 497	567 497	567 497	567 497
21-30-109	CAP, Ball	920 478	920 478	920 478	317 448	317 448	317 448

★Indicates use as required. Prices and specifications subject to change without notice.
 □Indicates parts not listed in any previous parts books.
 Series No. (1 indicates B-1 Series) (2 indicates B-2 Series) (3 indicates B-3 Series) (4 indicates B-4 Series)
 Where no Series No. is shown part is for B-1, B-2, B-3 and B-4 Series.
 December 31, 1952 Page 21-38 Printed in U.S.A.

Continued from previous page. Read across.

1274 648	1190 677	1501 891	1263 109	1502 900	1263 311	1267 195	1393 689	1270 651	CODE
1265 668	-----	-----	-----	-----	-----	-----	-----	-----	21-26-3
122 007	-----	-----	-----	-----	-----	-----	-----	-----	
120 214	-----	-----	-----	-----	-----	-----	-----	-----	
1265 669	-----	-----	-----	-----	-----	-----	-----	-----	21-26-4
-----	565 317	565 317	565 317	565 317	565 317	-----	-----	-----	21-26-6
-----	565 318	565 318	565 318	565 318	565 318	-----	-----	-----	21-26-7
572 551	-----	-----	-----	-----	-----	-----	-----	-----	21-26-8
1265 670	-----	-----	-----	-----	-----	-----	-----	-----	21-26-9
-----	567 416	567 416	567 416	567 416	567 416	-----	-----	-----	21-26-10
1265 671	-----	-----	-----	-----	-----	-----	-----	-----	21-26-11
1265 673	585 279	585 279	585 279	585 279	585 279	1269 693	1269 693	1269 693	21-27-2
122 007	120 233	120 233	120 233	120 233	120 233	120 233	120 233	120 233	
120 214	120 382	120 382	120 382	120 382	120 382	120 382	120 382	120 382	
1265 675	585 280	585 280	585 280	585 280	585 280	585 280	585 280	585 280	21-27-3
-----	585 282	585 282	585 282	585 282	585 282	-----	-----	-----	21-27-12
-----	120 647	120 647	120 647	120 647	120 647	-----	-----	-----	
-----	567 757	567 757	567 757	567 757	567 757	-----	-----	-----	21-27-20
-----	-----	-----	-----	-----	-----	1269 692	1269 692	1269 692	21-27-21
1265 682	1196 652	1196 652	1196 652	1196 652	1196 652	1269 697	1269 697	1269 697	21-29-2
120 233	120 233	120 233	120 233	120 233	120 233	120 233	120 233	120 233	
120 382	120 382	120 382	120 382	120 382	120 382	120 382	120 382	120 382	
-----	-----	-----	-----	-----	-----	1270 638	1270 638	1270 638	21-29-8
-----	-----	-----	-----	-----	-----	120 233	120 233	120 233	
-----	-----	-----	-----	-----	-----	120 382	120 382	120 382	
-----	-----	-----	-----	-----	-----	1269 703	1269 703	1269 703	21-29-9
1265 683	567 486	567 486	567 486	567 486	567 486	1269 701	1269 701	1269 701	21-29-25
-----	579 719	-----	579 719	579 719	579 719	-----	-----	-----	21-29-33
1196 626	-----	1196 626	-----	-----	-----	-----	-----	-----	21-30-1
1267 555	1195 842	1195 842	1195 842	1195 842	1195 842	1270 639	1270 639	1270 639	21-30-2
1267 554	-----	1270 431	-----	-----	-----	-----	-----	-----	
42 971	42 971	42 971	42 971	42 971	42 971	1269 723	1269 723	1269 723	21-30-6
571 390	571 390	571 390	571 390	571 390	571 390	571 390	571 390	571 390	21-30-16
1268 587	569 991	569 991	569 991	569 991	569 991	1269 720	1269 720	1269 720	21-30-43
567 497	567 497	567 497	567 497	567 497	567 497	1269 721	1269 721	1269 721	21-30-46
317 448	920 478	317 448	920 478	317 448	920 478	1269 722	1269 722	1269 722	21-30-109

★ Indicates use as required.

E Indicates parts not listed in any previous parts books.

Series No. (1 indicates B-1 Series) (2 indicates B-2 Series) (3 indicates B-3 Series) (4 indicates B-4 Series)

Where no Series No. is shown part is for B-1, B-2, B-3 and B-4 Series.

Prices and specifications subject to change without notice.

Continued on opposite page. Read across.

CODE	5 SPEED TRANSMISSIONS - Cont'd	1194 689	1263 065	1263 076	1265 634	1272 974	1266 729
------	--------------------------------	----------	----------	----------	----------	----------	----------

Note: All quantities are one (1) unless otherwise indicated in parenthesis.

GEARSHIFT LEVER - Cont'd

21-30-157	PLUG, Hand Lever Support (Cab-Over-Engine only)	594 727	594 727	594 727	594 727	594 727	594 727
21-30-160	SPRING, Hand Lever Support Plug (Cab-Over-Engine only) . .	594 728	594 728	594 728	594 728	594 728	594 728

21-30-163	ROD, Control (Cab-Over-Engine only) (B-1-JM up to serial No. 8738895 Det. and 88500672 S.L. Built)	1196 628	1196 628	1196 628	-----	-----	-----
-----------	--	----------	----------	----------	-------	-------	-------

	ROD, Control (Cab-Over-Engine only) (B-1-JM after serial No. 8738895 Det. and 88500672 S.L. Built)	1263 868	1263 868	1263 868	-----	-----	-----
	ROD, Control (Cab-Over-Engine only).	-----	-----	-----	1263 868	1263 868	1263 868

21-30-164	BOLT, Control Rod (Cab-Over-Engine only) (2)	594 726	594 726	594 726	594 726	594 726	594 726
	Nut.	125 233	125 233	125 233	125 233	125 233	125 233
	Pin, cotter (2)	103 373	103 373	103 373	103 373	103 373	103 373

GEARSHIFT RAIL

21-34-8	RAIL, Low and Reverse Shift . .	E1392 147	E1392 147	E1392 147	E1391 406	E1391 406	E1391 406
	RAIL, Second and Third Shift . .	1196 653	1196 653	1196 653	1265 685	1265 685	1265 685
	RAIL, Fourth and Direct Shift . .	1196 654	1196 654	1196 654	1265 686	1265 686	1265 686
	RAIL, Low and Reverse Shift Fork	-----	-----	-----	-----	-----	-----
	Ball (interlock) (4)	104 921	104 921	104 921	104 920	104 920	104 920
	Ball (poppet) (3)	104 921	104 921	104 921	104 920	104 920	104 920
	Plug (interlock).	103 891	103 891	103 891	-----	-----	-----
	Plug (rail) (3).	103 893	103 893	103 893	103 892	103 892	*103 892

21-34-32	LUG, Low and Reverse Shift . . .	567 411	567 411	567 411	1265 688	1265 688	1265 688
	LUG, Second and Third Shift . . .	567 409	567 409	567 409	1265 691	1265 691	1265 691
	LUG, Low and Reverse Shift Rail Rocker	-----	-----	-----	-----	-----	-----
	LUG, Fourth and Fifth Shift . . .	-----	-----	-----	-----	-----	-----

21-34-33	SCREW (lug to rail) (21-39-20) (*) .	517 362	517 362	517 362	517 362	517 362	517 362
21-34-34	LOCKWIRE (lug to rail screw) (5-19-21) (*)	572 551	572 551	572 551	572 551	572 551	572 551
21-34-42	PIN, Interlock	567 498	567 498	567 498	1265 694	1265 694	1265 694

21-34-47	SPRING, Poppet (*)	567 501	567 501	567 501	517 373	517 373	517 373
	SPRING, Low and Reverse Shift Rail Poppet.	-----	-----	-----	-----	-----	-----
21-34-67	ARM, Low and Reverse Shift Rocker	-----	-----	-----	-----	-----	-----

*Indicates use as required.

Prices and specifications subject to change without notice.

E1Indicates parts not listed in any previous parts books.

Series No. (1 indicates B-1 Series) (2 indicates B-2 Series) (3 indicates B-3 Series) (4 indicates B-4 Series)

Where no Series No. is shown part is for B-1, B-2, B-3 and B-4 Series.

Printed in U.S.A.

Continued from previous page. Read across.

1274 648	1190 677	⊠1501 891	1263 109	⊠1502 900	1263 311	1267 195	⊠1393 689	1270 651	CODE
594 727	-----	-----	-----	-----	-----	-----	-----	-----	21-30-157
594 728	-----	-----	-----	-----	-----	-----	-----	-----	21-30-160
-----	-----	-----	-----	-----	-----	-----	-----	-----	21-30-163
1263 868	-----	-----	-----	-----	-----	-----	-----	-----	
594 726	-----	-----	-----	-----	-----	-----	-----	-----	21-30-164
125 233	-----	-----	-----	-----	-----	-----	-----	-----	
103 373	-----	-----	-----	-----	-----	-----	-----	-----	
⊠1391 406	⊠1392 147	⊠1392 147	⊠1392 147	⊠1392 147	⊠1392 147	1269 705	1269 705	1269 705	21-34-8
1265 685	1196 653	1196 653	1196 653	1196 653	1196 653	1269 708	1269 708	1269 708	
1265 686	1196 654	1196 654	1196 654	1196 654	1196 654	1269 712	1269 712	1269 712	
-----	-----	-----	-----	-----	-----	1269 715	1269 715	1269 715	
104 920	104 921	104 921	104 921	104 921	104 921	104 921	104 921	104 921	
104 920	104 921	104 921	104 921	104 921	104 921	104 921	104 921	104 921	
-----	103 891	103 891	103 891	103 891	103 891	103 891	103 891	103 891	
103 892	103 893	103 893	103 893	103 893	103 893	103 893	103 893	103 893	
1265 688	567 411	567 411	567 411	567 411	567 411	1269 706	1269 706	1269 706	21-34-32
1265 691	567 409	567 409	567 409	567 409	567 409	1269 709	1269 709	1269 709	
-----	-----	-----	-----	-----	-----	1269 707	1269 707	1269 707	
-----	-----	-----	-----	-----	-----	1269 713	1269 713	1269 713	
517 362	517 362	517 362	517 362	517 362	517 362	517 362	517 362	517 362	21-34-33
572 551	572 551	572 551	572 551	572 551	572 551	572 551	572 551	572 551	21-34-34
1265 694	567 498	567 498	567 498	567 498	567 498	567 498	567 498	567 498	21-34-42
517 373	567 501	567 501	567 501	567 501	567 501	567 501	567 501	567 501	21-34-47
-----	-----	-----	-----	-----	-----	1269 717	1269 717	1269 717	
-----	-----	-----	-----	-----	-----	1269 718	1269 718	1269 718	21-34-67

★ Indicates use as required.

Prices and specifications subject to change without notice.

⊠ Indicates parts not listed in any previous parts books.

Series No. (1 indicates B-1 Series) (2 indicates B-2 Series) (3 indicates B-3 Series) (4 indicates B-4 Series)

Where no Series No. is shown part is for B-1, B-2, B-3 and B-4 Series.

Continued on opposite page. Read across

CODE	5 SPEED TRANSMISSIONS - Cont'd	1194 689	1263 065	1263 076	1265 634	1272 974	1266 729
------	--------------------------------	----------	----------	----------	----------	----------	----------

Note: All quantities are one (1) unless otherwise indicated in parenthesis.

GEARSHIFT RAIL - Cont'd

21-34-68	PIN, Low and Reverse Shift						
	Rocker Arm	-----	-----	-----	-----	-----	-----
	Nut	-----	-----	-----	-----	-----	-----
	Washer, lock	-----	-----	-----	-----	-----	-----

GEARSHIFT FORK

21-39-3	FORK, Low and Reverse Shift . .	567 427	567 427	567 427	1265 692	1265 692	1265 692
	FORK, Second and Third Shift . .	567 427	567 427	567 427	1265 692	1265 692	1265 692
	FORK, Fourth and Direct Shift. .	1196 656	1196 656	1196 656	1265 693	1265 693	1265 693
21-39-20	SCREW (fork to rail) (3)	517 362	517 362	517 362	517 362	517 362	517 362
21-39-23	LOCKWIRE (fork to rail screw) (5-19-21) (3)	572 551	572 551	572 551	572 551	572 551	572 551

GEARSHIFT FIRST AND REVERSE LATCH PLUNGER

21-41-2	PLUNGER, Shift Rail (use with 313 514 "C" Washer).	-----	-----	-----	Ⓔ1500 335	Ⓔ1500 335	Ⓔ1500 335
	PLUNGER, Shift Rail (use with 1265 690 Snap Ring) . .	-----	-----	-----	1265 689	1265 689	1265 689
	PLUNGER, Shift Rail	567 407	567 407	567 407	-----	-----	-----
	Nut	128 177	128 177	128 177	-----	-----	-----
	Pin, cotter	112 726	112 726	112 726	-----	-----	-----
21-41-3	SPRING	567 499	567 499	567 499	567 499	567 499	567 499
21-41-5	SNAP RING (UP TO use Snap Ring Type)	-----	-----	-----	1265 690	1265 690	1265 690
	WASHER, "C" (AFTER use "C" Washer Type).	-----	-----	-----	313 514	313 514	313 514

OVERDRIVE GEARS

21-54-29	GEAR, Main Shaft Overdrive . . .	-----	-----	1266 398	-----	-----	1266 875
21-54-30	SPACER, Bushing (21-10-52) (1.015 - 1.018)	-----	-----	567 400	-----	-----	-----
	(1.012 - 1.015)	-----	-----	-----	-----	-----	-----
21-54-31	SHIM, Main Shaft (★)(21-10-69) .	-----	-----	570 859	-----	-----	-----
	(★)(21-10-69)	-----	-----	570 860	-----	-----	-----
21-54-33	WASHER, Main Shaft Retaining (★). (★). (★).	-----	-----	-----	-----	-----	-----
21-54-34	WASHER, Main Shaft Locating (21-10-62) (frt.) (.118 - .120) . .	-----	-----	Ⓔ1501 348	-----	1266 835	1266 835
	(.121 - .123)	-----	-----	Ⓔ1501 349	-----	-----	-----
	(.124 - .126)	-----	-----	Ⓔ1501 350	-----	-----	-----
	(.127 - .129)	-----	-----	Ⓔ1501 351	-----	-----	-----
	(.130 - .132)	-----	-----	Ⓔ1501 352	-----	-----	-----
	(rear) (.119 - .121)	-----	-----	Ⓔ1501 345	-----	-----	-----
21-54-35	PIN, Main Shaft Gear Bushing (21-10-64)	-----	-----	567 489	-----	-----	1265 655
21-54-38	BUSHING, Main Shaft Gear (21-10-52)	-----	-----	920 460	-----	-----	1265 654
21-54-39	GEAR, Overdrive and High Sliding	-----	-----	920 463	-----	-----	-----
21-54-40	RING, Main Shaft Gear Retainer (21-10-58)	-----	-----	567 491	-----	-----	-----
21-54-43	GEAR, Countershaft	-----	-----	1266 400	-----	-----	-----

★Indicates use as required.

Prices and specifications subject to change without notice.

ⒺIndicates parts not listed in any previous parts books.

Series No. (1 indicates B-1 Series) (2 indicates B-2 Series) (3 indicates B-3 Series) (4 indicates B-4 Series)

Where no Series No. is shown part is for B-1, B-2, B-3 and B-4 Series.

December 31, 1952

Continued from previous page. Read across.

1274 648	1190 677	1501 891	1263 109	1502 900	1263 311	1267 195	1393 689	1270 651	CODE
-----	-----	-----	-----	-----	-----	1269 719	1269 719	1269 719	21-34-68
-----	-----	-----	-----	-----	-----	120 371	120 371	120 371	
-----	-----	-----	-----	-----	-----	135 629	135 629	135 629	
1265 692	567 427	567 427	567 427	567 427	567 427	1269 716	1269 716	1269 716	21-39-3
1265 692	567 427	567 427	567 427	567 427	567 427	1269 710	1269 710	1269 710	
1265 693	1196 656	1196 656	1196 656	1196 656	1196 656	1269 714	1269 714	1269 714	
517 362	517 362	517 362	517 362	517 362	517 362	1269 711	1269 711	1269 711	21-39-20
572 551	572 551	572 551	572 551	572 551	572 551	572 551	572 551	572 551	21-39-23
⊠1500 335	-----	-----	-----	-----	-----	-----	-----	-----	21-41-2
1265 689	-----	-----	-----	-----	-----	-----	-----	-----	
-----	567 407	567 407	567 407	567 407	567 407	1269 704	1269 704	1269 704	
-----	128 177	128 177	128 177	128 177	128 177	128 177	128 177	128 177	
-----	112 726	112 726	112 726	112 726	112 726	112 726	112 726	112 726	
567 499	567 499	567 499	567 499	567 499	567 499	567 499	567 499	567 499	21-41-3
1265 690	-----	-----	-----	-----	-----	-----	-----	-----	21-41-5
313 514	-----	-----	-----	-----	-----	-----	-----	-----	
1266 875	-----	-----	-----	1266 398	1266 398	-----	⊠1393 967	1271 056	21-54-29
-----	-----	-----	-----	567 400	567 400	-----	-----	-----	21-54-30
-----	-----	-----	-----	1501 217	-----	-----	-----	-----	
-----	-----	-----	-----	-----	570 859	-----	-----	-----	21-54-31
-----	-----	-----	-----	-----	570 860	-----	-----	-----	
-----	-----	-----	-----	-----	-----	-----	1271 057	1271 057	21-54-33
-----	-----	-----	-----	-----	-----	-----	1271 058	1271 058	
-----	-----	-----	-----	-----	-----	-----	1271 059	1271 059	
1266 835	-----	-----	-----	⊠1501 348	⊠1501 348	-----	-----	-----	21-54-34
-----	-----	-----	-----	⊠1501 349	⊠1501 349	-----	-----	-----	
-----	-----	-----	-----	⊠1501 350	⊠1501 350	-----	-----	-----	
-----	-----	-----	-----	⊠1501 351	⊠1501 351	-----	-----	-----	
-----	-----	-----	-----	⊠1501 352	⊠1501 352	-----	-----	-----	
-----	-----	-----	-----	⊠1501 345	⊠1501 345	-----	-----	-----	
1265 655	-----	-----	-----	567 489	567 489	-----	-----	-----	21-54-35
1265 654	-----	-----	-----	920 460	920 460	-----	-----	-----	21-54-38
-----	-----	-----	-----	920 463	920 463	-----	1271 060	1271 060	21-54-39
-----	-----	-----	-----	567 491	567 491	-----	-----	-----	21-54-40
-----	-----	-----	-----	1266 400	1266 400	-----	⊠1393 966	1271 063	21-54-43

★ Indicates use as required.

⊠ Indicates parts not listed in any previous parts books.

Series No. (1 indicates B-1 Series) (2 indicates B-2 Series) (3 indicates B-3 Series) (4 indicates B-4 Series)

Where no Series No. is shown part is for B-1, B-2, B-3 and B-4 Series.

Prices and specifications subject to change without notice.

CODE	PART NAME AND DESCRIPTION	SERIES NO.	MODEL CODES													PART NO.
			B	C	D	E	G	H&HH	FM	GM	HM & HHM	J	JM	K	KM	

SPEEDOMETER CABLE

Note: Parts indicated by single dagger (†) are used UP TO the following effective points.

Note: Parts indicated by double dagger (‡) are used AFTER the following effective points.

	Detroit Built		San Leandro
	Mile	Kilometer	Built
B-2-B	82182144	82181607	85303961
B-2-C	83351578		85507119
B-2-D	81288061	81289197	86009051
B-2-F	80386625	80385493	86513198
B-2-G	80073631	80072872	86600184
B-2-H, B-2-HH	82571683	82570653	85602115
B-2-GM	83701391	83701274	9267525
B-2-HM, B-2-HHM	8741286	8741209	88501012
B-2-J, B-2-K	82808262	82806964	88600114
B-2-JM, B-2-KM	82950811	82950614	88680022
B-2-R	81859320	81859095	
B-2-T, B-2-V	81793922	81793723	
B-2-Y	8301691	8301642	

21-84-1	CABLE (w/SHAFT and HOUSING)																		
	(60" lgh.)	1	1	1	1	1	-	1	-	-	1	-	1	-	1	1	1	-	1257 335
	(60" lgh.)	2	1	1	1	1	1	1	-	-	1	-	1	-	1	1	1	1	†1257 335
	(58" lgh.)	2	1	1	1	1	1	1	-	-	1	-	1	-	1	1	1	1	‡1343 929
	(58" lgh.) (except TRUCK-O-MATIC)	3,4	1	1	1	1	1	1	-	-	1	-	1	-	1	1	1	-	*1343 929
	(64" lgh.) (TRUCK-O-MATIC)	4	1	1	-	-	-	-	-	-	-	-	-	-	-	-	-	-	‡1343 928
	(58" lgh.) (up to serial No. 8303894)	3	-	-	-	-	-	-	-	-	-	-	-	-	-	-	-	-	*1343 929
	(64" lgh.) (after serial No. 8303894)	3,4	-	-	-	-	-	-	-	-	-	-	-	-	-	-	-	1	‡1343 928
	(96" lgh.)	1	-	-	-	-	-	-	1	-	1	-	1	-	1	-	-	-	926 079
	(96" lgh.)	2	-	-	-	-	-	-	1	-	1	-	1	-	1	-	-	-	†926 079
	(96" lgh.)	2	-	-	-	-	-	-	1	-	1	-	1	-	1	-	-	-	‡1271 148
	(96" lgh.)	3,4	-	-	-	-	-	1	-	1	-	1	-	1	-	-	-	-	1271 148
21-84-4	SHAFT, Drive																		
	(54" lgh.)	-	★	★	★	★	★	★	-	-	★	-	★	-	★	★	★	★	1260 731
	(58" lgh.)	-	★	★	★	★	★	★	-	-	★	-	★	-	★	★	★	★	1163 782
	(60" lgh.)	-	★	★	★	★	★	★	-	-	★	-	★	-	★	★	★	★	1257 336
	(64" lgh.)	-	1	1	-	-	-	-	-	-	-	-	-	-	-	-	-	1	*1089 709
	(91" lgh.)	-	-	-	-	-	-	★	★	★	-	★	-	★	-	-	-	-	910 562
	(96" lgh.)	-	-	-	-	-	-	★	★	★	-	★	-	★	-	-	-	-	926 080
21-84-5	LUBRICANT (8 oz. tube)	-	1	1	1	1	1	1	1	1	1	1	1	1	1	1	1	1	1243 632
21-84-14	CLIP	-	1	1	1	1	1	1	-	-	1	-	1	-	1	1	1	1	1091 110
		-	-	-	-	-	-	-	3	3	3	-	3	-	3	-	-	-	581 523
		-	-	-	-	-	-	-	-	-	-	-	-	-	-	-	-	1	957 458
21-84-15	FASTENER, Clip	-	1	1	1	1	1	1	-	-	1	-	1	-	1	1	1	1	1331 293
	SCREW	-	-	-	-	-	-	1	1	1	-	1	-	1	-	-	-	-	929 054

SPEEDOMETER GEAR AND PINION

- 21-85-4 GEAR, Drive (see following chart)
- 21-85-5 PINION, Drive (see following chart)

★ Indicates use as required. Prices and specifications subject to change without notice.
 ☐ Indicates parts not listed in any previous parts books.
 Series No. (1 indicates B-1 Series) (2 indicates B-2 Series) (3 indicates B-3 Series) (4 indicates B-4 Series)
 Where no Series No. is shown part is for B-1, B-2, B-3 and B-4 Series.
 April 13, 1953 Supersedes Dec. 31, 1952. Page 21-44 * Indicates change or addition. Printed in U.S.A.

SPEEDOMETER GEAR AND PINION

3 SPEED TRANSMISSION

Tire Size	Ply	3.91 to 1 Ratio		4.1 to 1 Ratio		4.3 to 1 Ratio		4.78 to 1 Ratio		4.89 to 1 Ratio	
		Gear	Pinion	Gear	Pinion	Gear	Pinion	Gear	Pinion	Gear	Pinion
6.00 x 16	4-6	579 515	579 510	579 515	916 416	579 515	918 872	579 515	579 514	579 515	579 514
6.50 x 16	4-6	579 515	579 510	579 515	916 416	579 515	918 872	579 515	579 513	579 515	579 513
7.00 x 16	6	579 515	579 510	---	---	579 515	916 416	---	---	579 515	579 513
7.50 x 16	6-8	1268 547	1268 549	---	---	579 515	579 510	---	---	579 515	918 872
8.25 x 16	8-10	1268 547	1268 548	---	---	579 516	652 846	---	---	579 516	652 842
6.70 x 15	4-6	---	---	579 515	916 416	---	---	579 515	579 513	---	---
7.00 x 15	6	---	---	579 515	579 510	579 515	916 416	579 515	579 513	---	---
7.00 x 17	6-8	1268 547	1268 549	---	---	579 515	579 510	---	---	579 515	918 872
7.50 x 17	8-10	1268 547	1268 548	---	---	1268 547	1268 549	---	---	579 515	916 416
6.00 x 18	6	---	---	579 515	579 510	---	---	579 515	918 872	---	---

4 SPEED TRANSMISSION

Tire Size	Ply	3.9 to 1 Ratio		4.1 to 1 Ratio		4.3 to 1 Ratio		4.78 to 1 Ratio		4.89 to 1 Ratio	
		Gear	Pinion	Gear	Pinion	Gear	Pinion	Gear	Pinion	Gear	Pinion
6.00 x 16	4-6	561 816	571 653	561 816	571 654	561 816	571 655	561 651	571 653	561 651	571 653
6.50 x 16	4-6	1268 550	1268 552	561 816	571 653	561 816	571 654	561 816	571 656	561 651	571 653
7.00 x 16	6	1268 550	1268 552	---	---	561 816	571 653	561 816	571 655	561 816	571 655
7.50 x 16	6-8	1268 550	1268 552	---	---	561 816	571 654	561 816	571 655	561 816	571 656
8.25 x 16	8	1268 550	1268 551	---	---	1268 550	1268 552	---	---	561 816	571 654
6.00 x 18	6	---	---	561 816	571 653	---	---	561 816	571 655	---	---
7.00 x 15	6	---	---	561 816	571 653	561 816	571 654	561 816	571 655	---	---
6.70 x 15	4-6	---	---	561 816	571 654	---	---	561 651	571 653	---	---
7.00 x 17	6	1268 550	1268 551	---	---	561 816	571 653	---	---	561 816	571 655
7.50 x 17	6-8	1268 550	1268 551	---	---	1268 550	1268 552	---	---	561 816	571 654

Tire Size	Ply	5.625 to 1 Ratio		6.285 to 1 Ratio		6.833 to 1 Ratio	
		Gear	Pinion	Gear	Pinion	Gear	Pinion
6.00 x 20	6	561 651	571 653	561 651	571 655	561 651	571 656
6.50 x 20	6-8	561 816	571 656	561 651	571 654	561 651	571 655
7.00 x 20	8-10	561 651	571 653	561 651	571 655	561 651	571 656
7.50 x 20	8-10	561 816	571 655	561 651	571 653	561 651	571 654
8.25 x 20	10-12	561 816	571 654	561 651	571 653	561 651	571 654
9.00 x 20	10	561 816	571 654	561 816	571 655	561 651	571 653
9.00 x 20	12	561 816	571 654	561 816	571 656	561 816	571 656

Tire Size	Ply	5.14-7.15 to 1 Ratio		5.83-8.11 to 1 Ratio		6.33-8.81 to 1 Ratio	
		Gear	Pinion	Gear	Pinion	Gear	Pinion
6.00 x 20	6-8	561 816	571 655	561 651	571 653	561 651	571 655
6.50 x 20	6-8	561 816	571 654	561 651	571 653	561 651	571 654
7.00 x 20	8-10	561 816	571 655	561 651	571 653	561 651	571 655
7.50 x 20	8-10	561 816	571 654	561 816	571 655	561 651	571 653
8.25 x 20	10	561 816	571 653	561 816	571 655	561 651	571 653
9.00 x 20	10-12	561 816	571 653	561 816	571 654	561 816	571 655

21-85-4 GEAR, Drive (see following chart)

21-85-5 PINION, Drive (see following chart)

TRUCK-O-MATIC TRANSMISSION

Tire Size	Ply	3.73 to 1 Ratio		4.1 to 1 Ratio		4.78 to 1 Ratio	
		Gear	Pinion	Gear	Pinion	Gear	Pinion
6.00 x 16	4-6	---	EH325 693	---	EH325 694	---	EH325 690
6.50 x 16	6	---	EH325 693	---	EH325 694	---	EH325 690
6.00 x 18	6	---	EH325 690	---	EH325 694	---	EH325 692
7.00 x 15	6	---	---	---	EH325 694	---	---
7.10 x 15	6	---	EH325 693	---	EH325 694	---	EH325 690

★Indicates use as required.

E Indicates parts not listed in any previous parts books.

Series No. (1 indicates B-1 Series) (2 indicates B-2 Series) (3 indicates B-3 Series) (4 indicates B-4 Series)

Where no Series No. is shown part is for B-1, B-2, B-3 and B-4 Series.

Prices and specifications subject to change without notice.

SPEEDOMETER GEAR AND PINION - Cont'd

21-85-4 GEAR, Drive (see following chart) - Cont'd
 21-85-5 PINION, Drive (see following chart) - Cont'd

5 SPEED TRANSMISSION EXCEPT MODEL B-2-Y AND B-3-Y

Tire Size	Ply	5.625 to 1 Ratio		6.285 to 1 Ratio		6.833 to 1 Ratio		5.83-8.11 to 1 Ratio		6.33-8.81 to 1 Ratio	
		Gear	Pinion	Gear	Pinion	Gear	Pinion	Gear	Pinion	Gear	Pinion
6.00 x 20	6	567 704	571 740	567 704	571 738	567 704	571 737	567 704	571 740	567 704	571 738
6.50 x 20	6-8	567 705	571 737	567 704	571 739	567 704	571 738	567 704	571 740	567 704	571 739
7.00 x 20	8	567 704	571 740	567 704	571 738	567 704	571 737	567 704	571 740	567 704	571 738
7.00 x 20	10	567 705	571 738	567 704	571 739	567 704	571 738	567 704	571 739	567 704	571 739
7.50 x 20	8-10	567 705	571 738	567 704	571 740	567 704	571 739	567 705	571 738	567 704	571 740
8.25 x 20	10-12	---	---	567 705	571 737	567 704	571 739	567 705	571 738	567 704	571 740
9.00 x 20	10-12	---	---	567 705	571 738	567 704	571 740	567 705	571 739	567 705	571 738
10.00 x 20	12	---	---	---	---	567 705	571 737	---	---	---	---
11.00 x 20	12	---	---	---	---	567 705	571 737	---	---	---	---

Tire Size	Ply	7.166 to 1 Ratio		6.143-8.545 to 1 Ratio		6.50-9.04 to 1 Ratio		6.80 to 1 Ratio	
		Gear	Pinion	Gear	Pinion	Gear	Pinion	Gear	Pinion
6.50 x 20	6-8	567 704	571 737	567 704	571 739	567 704	571 738	---	---
7.50 x 20	8-10	567 704	571 738	567 704	571 740	567 704	571 739	567 704	571 739
8.25 x 20	10-12	567 704	571 738	567 705	571 737	567 704	571 740	567 704	571 739
9.00 x 20	10	567 704	571 739	567 705	571 738	567 705	571 737	567 704	571 740
9.00 x 20	12	567 704	571 739	567 705	571 738	---	---	567 704	571 740

Tire Size	Ply	7.40 to 1 Ratio		6.13-8.15 to 1 Ratio		6.32-8.22 to 1 Ratio		6.64-9.18 to 1 Ratio		7.80 to 1 Ratio	
		Gear	Pinion	Gear	Pinion	Gear	Pinion	Gear	Pinion	Gear	Pinion
7.50 x 20	8	567 704	571 737	567 704	571 740	---	---	567 704	571 739	---	---
7.50 x 20	10	567 704	571 737	567 705	571 737	567 704	571 740	---	---	---	---
8.25 x 20	10	567 704	571 738	567 705	571 737	567 704	571 740	567 704	571 739	567 704	571 737
8.25 x 20	12	567 704	571 738	567 705	571 737	567 705	571 737	567 704	571 739	567 704	571 737
9.00 x 20	10-12	567 704	571 739	567 705	571 738	567 705	571 738	567 704	571 740	567 704	571 738
10.00 x 20	12	567 704	571 739	---	---	567 705	571 738	567 705	571 737	567 704	571 738
11.00 x 20	12	567 704	571 740	---	---	567 705	571 738	567 705	571 738	567 704	571 739
11.00 x 22	12	567 705	571 737	---	---	567 705	571 739	567 705	571 739	567 704	571 740
11.00 x 22	14	567 705	571 737	---	---	567 705	571 739	567 705	571 739	567 704	571 740

Tire Size	Ply	8.22 to 1 Ratio		8.53 to 1 Ratio		6.53-8.53 to 1 Ratio		7.12-9.55 to 1 Ratio		8.15 to 1 Ratio	
		Gear	Pinion	Gear	Pinion	Gear	Pinion	Gear	Pinion	Gear	Pinion
7.50 x 20	10	567 444	572 461	---	---	---	---	---	---	---	---
8.25 x 20	10	567 444	572 015	567 444	572 461	567 704	571 740	567 704	571 738	---	---
8.25 x 20	12	---	---	---	---	567 704	571 740	567 704	571 739	567 704	572 015
9.00 x 20	10-12	567 704	571 737	567 444	572 015	567 705	571 737	567 704	571 739	567 704	572 015
10.00 x 20	12	567 704	571 737	567 704	571 737	567 705	571 738	567 704	571 740	567 704	571 737
11.00 x 20	12	567 704	571 737	567 704	571 737	567 705	571 738	567 704	571 740	567 704	571 738
11.00 x 22	12	567 704	571 739	567 704	571 738	567 705	571 739	567 705	571 737	---	---
11.00 x 22	14	567 704	571 739	567 704	571 738	567 705	571 739	567 705	571 737	---	---

Tire Size	Ply	5.11 to 1 Ratio		7.20 to 1 Ratio		8.38 to 1 Ratio		6.16-8.19 to 1 Ratio		6.41-8.38 to 1 Ratio	
		Gear	Pinion	Gear	Pinion	Gear	Pinion	Gear	Pinion	Gear	Pinion
6.00 x 20	6	567 705	571 738	---	---	---	---	---	---	---	---
6.50 x 20	6-8	567 705	571 738	---	---	---	---	---	---	---	---
7.00 x 20	8-10	567 705	571 739	---	---	---	---	---	---	---	---
7.50 x 20	8-10	567 705	571 740	567 704	571 738	567 444	572 461	567 704	571 740	567 704	571 739
8.25 x 20	10-12	567 705	571 740	567 704	571 738	567 444	572 015	567 705	571 737	567 704	571 740
9.00 x 20	10-12	567 705	571 740	567 704	571 739	567 444	572 015	567 705	571 738	567 705	571 737
10.00 x 20	12	567 705	571 740	567 704	571 739	567 704	571 737	---	---	567 705	571 738
11.00 x 20	12	---	---	---	---	567 704	571 737	---	---	567 705	571 739
11.00 x 22	12-14	---	---	---	---	567 704	571 738	---	---	567 705	571 739

★Indicates use as required.

Prices and specifications subject to change without notice.

☐Indicates parts not listed in any previous parts books.

Series No. (1 indicates B-1 Series) (2 indicates B-2 Series) (3 indicates B-3 Series) (4 indicates B-4 Series)

Where no Series No. is shown part is for B-1, B-2, B-3 and B-4 Series.

Printed in U.S.A.

SPEEDOMETER GEAR AND PINION - Cont'd

21-85-4 GEAR, Drive (see following chart) - Cont'd
 21-85-5 PINION, Drive (see following chart) - Cont'd

5 SPEED TRANSMISSION MODEL B-2-Y AND B-3-Y ONLY

Tire Size	Ply	6.83 to 1 Ratio		7.40 to 1 Ratio		8.53 to 1 Ratio		9.23 to 1 Ratio		Gear	Pinion
		Gear	Pinion	Gear	Pinion	Gear	Pinion	Gear	Pinion		
10.00 x 20	12	1269 725	1269 727	1269 725	1269 728	1269 724	1269 727	1269 724	1269 728		
11.00 x 20	12	1269 725	1269 727	1269 725	1269 728	1269 724	1269 727	1269 724	1269 728		

Tire Size	Ply	6.53-8.53 to 1 Ratio		6.41-8.38 to 1 Ratio		7.27-9.49 to 1 Ratio	
		Gear	Pinion	Gear	Pinion	Gear	Pinion
10.00 x 20	12	1269 725	1269 726	1269 725	1269 726	1269 725	1269 728
11.00 x 20	12	1269 725	1269 726	1269 725	1269 726	1269 725	1269 728

CODE	PART NAME AND DESCRIPTION	SERIES NO.	MODEL CODES														PART NO.			
			B	C	D	F	G	H & HH	FM	GM	HM & HHM	J	JM	K	KM	R		T	V	Y
SPEEDOMETER GEAR AND PINION - Cont'd																				
21-85-27	SPACER, Gear (4 Speed)	-	1	1	1	1	1	1	1	1	1	1	-	-	-	-	-	-	-	1090 153
21-85-56	SEAL, Pinion (B-1-B up to serial No. 82058072, B-1-C up to serial No. 83316492, B-1-D up to serial No. 81252093) (3 Speed) (B-1-B after serial No. 82058072, B-1-C after serial No. 83316492, B-1-D after serial No. 81252093) (3 Speed)	1	1	1	1	-	-	-	-	-	-	-	-	-	-	-	-	-	-	652 840
	(3 Speed)	1	1	1	1	-	-	-	-	-	-	-	-	-	-	-	-	-	-	1134 949
	(3 Speed)	2,3,4	1	1	1	-	-	-	-	-	-	-	-	-	-	-	-	-	-	1134 949
21-85-60	NUT, Drive Pinion Retainer (4 Speed)	-	1	1	1	1	1	1	1	1	1	1	-	-	-	-	-	-	-	561 480
	(5 Speed)	-	-	-	-	1	1	1	-	1	1	1	1	1	1	1	1	1	1	567 485
21-85-68	BUSHING, Drive Pinion (4-5 Speed)	-	1	1	1	1	1	1	1	1	1	1	1	1	1	1	1	1	1	516 268
21-85-76	SLEEVE, Drive Pinion, w/SEAL (B-1-B up to serial No. 82058072, B-1-C up to serial No. 83316492, B-3-D up to serial No. 81252093) (3 Speed) (B-1-B after serial No. 82058072, B-1-C after serial No. 83316492, B-3-D after serial No. 81252093) (3 Speed)	1	1	1	1	-	-	-	-	-	-	-	-	-	-	-	-	-	-	652 841
	(3 Speed)	1	1	1	1	-	-	-	-	-	-	-	-	-	-	-	-	-	-	1139 156
	(3 Speed)	2,3,4	1	1	1	-	-	-	-	-	-	-	-	-	-	-	-	-	-	1139 156
SPEEDOMETER ADAPTER (W/2 SPEED REAR AXLE)																				
21-86-5	ADAPTER, Assembly	1,2	-	-	-	1	1	1	1	1	1	-	-	1	1	1	1	1	1	597 604
	(w/5.14-7.15 to 1 ratio rear axle)	3,4	-	-	-	1	1	1	1	1	1	-	-	1	1	1	1	1	1	1273 585
	(w/5.14-7.15 to 1 ratio rear axle)	1,2	-	-	-	-	-	-	-	-	-	1	1	-	-	-	-	-	-	915 762
	(w/5.14-7.15 to 1 ratio rear axle)	3,4	-	-	-	-	-	-	-	-	-	1	1	-	-	-	-	-	-	1273 586

★Indicates use as required.

□Indicates parts not listed in any previous parts books.

Series No. (1 indicates B-1 Series) (2 indicates B-2 Series) (3 indicates B-3 Series) (4 indicates B-4 Series)

Where no Series No. is shown part is for B-1, B-2, B-3 and B-4 Series.

Prices and specifications subject to change without notice.

CODE	PART NAME AND DESCRIPTION	SERIES NO.	MODEL CODES													PART NO.			
			B	C	D	F	G	H & HH	FM	GM	HM & HHM	J	JM	K	KM		R	T	V
SPEEDOMETER ADAPTER (W/2 SPEED REAR AXLE) - Cont'd																			
21-86-5	ADAPTER, Assembly (5.83-8.11 to 1 ratio rear axle all except 9.00 x 20 tires) (6.33-8.81 to 1 ratio rear axle all tire sizes)	1,2	-	-	-	-	-	-	-	-	-	1	1	-	-	-	-	-	597 604
	(5.83-8.11 to 1 ratio rear axle all except 9.00 x 20 tires) (6.33-8.81 to 1 ratio rear axle all tire sizes)	3,4	-	-	-	-	-	-	-	-	-	1	1	-	-	-	-	-	1273 585
	(5.83-8.11 to 1 ratio rear axle, w/9.00 x 20 tires)	1,2	-	-	-	-	-	-	-	-	-	1	1	-	-	-	-	-	915 762
	(5.83-8.11 to 1 ratio rear axle, w/9.00 x 20 tires)	3,4	-	-	-	-	-	-	-	-	-	1	1	-	-	-	-	-	1273 586
21-86-18	KEY, Drive	-	-	-	1	1	1	1	1	1	1	1	1	1	1	1	1	1	921 052
21-86-26	DIAPHRAGM, Shaft, w/BRACKET. Screw, No. 10-24 x 1/2"	-	-	-	1	1	1	1	1	1	1	1	1	1	1	1	1	1	1188 060
	Washer, lock	-	-	-	2	2	2	2	2	2	2	2	2	2	2	2	2	2	120 221
21-86-27	TUBE (adapter to control valve) . . (extension)	-	-	-	1	1	1	1	1	1	1	1	1	1	1	1	1	1	861 552
	Connector	-	-	-	1	1	1	1	1	1	1	1	1	1	1	1	1	1	861 539
	Nut	-	-	-	2	2	2	2	2	2	2	2	2	2	2	2	2	2	137 396
21-86-29	LEVER, w/ARM	-	-	-	1	1	1	1	1	1	1	1	1	1	1	1	1	1	588 156
21-86-48	DIAPHRAGM, w/Pull ROD	-	-	-	1	1	1	1	1	1	1	1	1	1	1	1	1	1	1191 676
21-86-51	SPRING, Diaphragm Pull Rod . . .	-	-	-	1	1	1	1	1	1	1	1	1	1	1	1	1	1	1191 678
21-86-52	CONNECTOR, Shift Vacuum Tube . .	-	-	-	-	-	-	-	-	-	-	-	-	-	1	1	1	1	1191 679
21-86-53	BRACKET, Diaphragm Mounting . . Screw, No. 4-24 x 3/8"	-	-	-	1	1	1	1	1	1	1	1	1	1	1	1	1	1	1191 677
		-	-	-	4	4	4	4	4	4	4	4	4	4	4	4	4	4	115 136
INTERRUPTER SWITCH																			
21-113-3	SWITCH (TRUCK-O-MATIC)	4	1	1	-	-	-	-	-	-	-	-	-	-	-	-	-	-	E1370 462
	Screw, No. 8-32 x 1/4"	4	2	2	-	-	-	-	-	-	-	-	-	-	-	-	-	-	122 159
	Washer, lock	4	2	2	-	-	-	-	-	-	-	-	-	-	-	-	-	-	138 479
	Terminal	4	2	2	-	-	-	-	-	-	-	-	-	-	-	-	-	-	200 393
21-113-4	GASKET, Switch (TRUCK-O-MATIC)	4	1	1	-	-	-	-	-	-	-	-	-	-	-	-	-	-	1113 113
21-113-6	COVER (TRUCK-O-MATIC)	4	1	1	-	-	-	-	-	-	-	-	-	-	-	-	-	-	1239 248
21-113-9	PIN, Actuating (TRUCK-O-MATIC) . .	4	1	1	-	-	-	-	-	-	-	-	-	-	-	-	-	-	1325 539
21-113-10	PLUG, Hole (TRUCK-O-MATIC) . . .	4	2	2	-	-	-	-	-	-	-	-	-	-	-	-	-	-	E1400 080
OIL PUMP STRAINER																			
21-117-1	STRAINER (TRUCK-O-MATIC)	4	1	1	-	-	-	-	-	-	-	-	-	-	-	-	-	-	E1312 412
OIL PUMP ROTOR																			
21-118-33	ROTOR, Inner and Outer (TRUCK-O-MATIC)	4	1	1	-	-	-	-	-	-	-	-	-	-	-	-	-	-	1139 189
21-118-34	PIN, Inner Rotor (TRUCK-O-MATIC)	4	1	1	-	-	-	-	-	-	-	-	-	-	-	-	-	-	1139 158
DIRECT SPEED PISTON																			
21-120-3	PISTON, w/SLEEVE (TRUCK-O-MATIC)	4	1	1	-	-	-	-	-	-	-	-	-	-	-	-	-	-	E1327 497
21-120-4	RING (TRUCK-O-MATIC)	4	1	1	-	-	-	-	-	-	-	-	-	-	-	-	-	-	1112 526

★Indicates use as required.

Prices and specifications subject to change without notice.

E1 Indicates parts not listed in any previous parts books.

Series No. (1 indicates B-1 Series) (2 indicates B-2 Series) (3 indicates B-3 Series) (4 indicates B-4 Series)

Where no Series No. is shown part is for B-1, B-2, B-3 and B-4 Series.

Printed in U.S.A.

CODE	PART NAME AND DESCRIPTION	SERIES NO.	MODEL CODES													PART NO.			
			B	C	D	F	G	H&HH	FM	GM	HM & HHM	J	JM	K	KM		R	T	V
DIRECT SPEED PISTON - Cont'd																			
21-120-6	PIN, Sleeve Locating (TRUCK-O-MATIC)	4	1	1	-	-	-	-	-	-	-	-	-	-	-	-	-	-	1325 536
21-120-7	SPRING, Return (TRUCK-O-MATIC)	4	1	1	-	-	-	-	-	-	-	-	-	-	-	-	-	-	1134 920
21-120-10	RETAINER, Spring (TRUCK-O-MATIC)	4	1	1	-	-	-	-	-	-	-	-	-	-	-	-	-	-	1325 537
21-120-11	SNAP RING, Return Spring Retainer (TRUCK-O-MATIC) . . .	4	1	1	-	-	-	-	-	-	-	-	-	-	-	-	-	-	1112 527
21-120-15	PLUG, Drain Hole (TRUCK-O-MATIC)	4	1	1	-	-	-	-	-	-	-	-	-	-	-	-	-	-	865 892
SHUTTLE VALVE																			
21-122-5	VALVE (TRUCK-O-MATIC)	4	1	1	-	-	-	-	-	-	-	-	-	-	-	-	-	-	⊠1314 041
21-122-6	SPRING (TRUCK-O-MATIC)	4	1	1	-	-	-	-	-	-	-	-	-	-	-	-	-	-	⊠1314 039
21-122-7	PLUG (TRUCK-O-MATIC)	4	1	1	-	-	-	-	-	-	-	-	-	-	-	-	-	-	⊠1402 360
21-122-8	GASKET, Plug (TRUCK-O-MATIC)	4	1	1	-	-	-	-	-	-	-	-	-	-	-	-	-	-	1117 819
21-122-11	PIN, Guide (TRUCK-O-MATIC)	4	1	1	-	-	-	-	-	-	-	-	-	-	-	-	-	-	⊠1314 040

NOTES

★ Indicates use as required. Prices and specifications subject to change without notice.
 ⊠ Indicates parts not listed in any previous parts books.
 Series No. (1 indicates B-1 Series) (2 indicates B-2 Series) (3 indicates B-3 Series) (4 indicates B-4 Series)
 Where no Series No. is shown part is for B-1, B-2, B-3 and B-4 Series.
 Printed in U.S.A. December 31, 1952
 Page 21-49

